

BedekerPRAGUE

restaurant guide city guide

1.
2012
FREE

Restaurants Cafés Hotels Culture Nightlife

Gastro
world in
PRAGUE





MISCH MASCH

**DANCE VIDEO ZONE –
(THE LATEST DANCE MUSIC VIDEO ON
THE BIGGEST TV IN PRAGUE)**

DANCE ZONE (NEW VIDEO DANCE)

FRESH FOOD

VIP AREA WITH TERRACE

COCKTAIL BAR

VIDEO PARTY LOUNGE MUSIC (60–90,RNB,POP,)

EXHIBITION SHOW

TOP DJs

TOP MUSIC

MISCH MASCH | VELETRŽNÍ 61 | 170 00 | PRAHA 7 | INFO@MISCHMASCH.CZ

WWW.MISCHMASCH.CZ



BOOK INFO@MISCHMASCH.CZ



OPEN
FRI-SAT 20-06



DANCE ZONE & VIDEO LOUNGE, TOP MUSIC, TOP DJs

WWW.MISCHMASCH.CZ

MISCH MASCH | VELETRŽNÍ 61 | 170 00 | PRAHA 7 | INFO@MISCHMASCH.CZ





contents

8

facts & info

arriving, public transportations,
history & the famous sites

18

culture & events

The most popular exhibitions,
concerts and shows

36

gastro

Prague's best restaurants and
cafés

48

hotels

Unusual accommodation in the
city

50

nightlife

Prague by night

56

main theme

Sinful night life of Prague city

60

service

Buy the ticket, rent a car or call
nearest health emergency

+420 732 333 777



WWW.EN.SKYSERVICE.CZ

paha@skyservice.cz

**TANDEM JUMPS
SIGHT-SEEING FLIGHTS**



**EVERY GREAT JOURNEY
BEGINS WITH A SINGLE STEP.**

THIS IS OURS.



Dlouhá street 6, Praha 1 (at the courtyard)

Bedeker **PRAGUE**

explanatory notes:



live music / livemusik / bella
musica / musique légère /
оркестр / živá hudba



garden / kleingarten /
giardinetto / jardinet /
ресторан в саду / zahrádka



wine / wein / vino / vin /
винный магазин / vinotéka



air-condition / klimatisierung /
climatizzazione / climatisation
/ кондиционер / klimatizace



lounge / repräsentationsraum
/ salottino / salon / Гостиная
/ salonek



nonsmoking room /
nichtrandcherabteit / non
fumatori / de non fumeurs /
ресторан для некурящих /
nekuřácký prostor



wi-fi / internetanschluss
/ collegamento a Internet
/ connexion à Internet /
беспроводной интернет/
připojení k internetu



swimming-pool /
schwimmbcken / piscina /
piscine / бассейн / bazén



cafe / kaffee / caffè / cafétéria
/ кафе / kavárna

bpmedia

BP Media, a.s.

Dukelských Hrdinů 747/19
170 00 Praha 7
www.bp-media.cz

EDITORIAL:

general editor: Jitka Peterová
editor: Milada Hrušková
editorial staff: Michal Liška
translation: Vo Anh Tuan

DESIGN & LAYOUT:
BP-Media, a.s.

SHOP ENSURES:
BP MEDIA A.S.

ADVERTISEMENT ORDER:
INFO@BP-MEDIA.CZ

DISTRIBUTION:
GRAND PRINC MEDIA, a.s.

COVER PHOTO:
www.czechtourism.cz

Free distribution on selected places
four times per year

Issue 1/2012 published: 16.04.2012

Registration: MK ČR E 19383

GALERIE LA FEMME



Boris Jirků, Romeo and Julie

WOMAN AS AN ETERNAL INSPIRATION IN ART
Original czech contemporary art by
famous and young artists

upcoming exhibitions:

3. 4. – 10. 5. **From the Stage –**

exhibition from the cycle „Homeworks“

14. 5. – 3. 6. **JAN ŠAFRÁNEK – Figural Cabinet**

**Galerie La Femme, Bílkova 2, Prague 1,
www.glf.cz, glf@volny.cz, +420 224 812 656**



[→] WELCOME TO PRAGUE!



Welcome to Prague! Whether you've just landed, arrived by train, bus or car, we've got the allimportant low down on how to reach the city center using all the possible means of transportation, whether on a tight budget or otherwise.



Добро пожаловать в Прагу! Если вы только что приземлились, прибыли на поезде, автобусе или автомобиле, у нас есть все важные данные о том, как добраться до центра города, используя все возможные виды транспорта в зависимости от ваших средств.

arriving
8

↓ 1. ARRIVING IN PRAGUE BY PLANE

The airport is located on the northwest edge of Prague, some 20km (12 miles) from the city center. Although Prague boasts other, smaller airports, all international flights operate through Ruzyně. Important related phone numbers include +420 220 113 314 (general info), +420 220 116 072 (baggage claim) and +420 220 114 283 (lost & found).

↓ GETTING TO THE CITY CENTRE

If you've just arrived at the airport, getting downtown is generally, depending on the traffic, a matter of some 20 to 30 minutes (if you make use of a taxi or a shuttle service; see below), or 50 minutes if you use the cheaper yet convenient and comfortable public transportation.

↓ 1. ПРИБЫТИЕ В ПРАГУ НА САМОЛЕТЕ

Аэропорт расположен на северозападной окраине Праги, приблизительно в 20 км от центра города. Хотя Прага может похвастаться другими, меньшими аэропортами, все международные рейсы осуществляются через аэропорт Рузине. Необходимыми телефонными номерами являются +420 220 113 314 (общая информация), +420 220 116 072 (багаж) и +420 220 114 283 (стол находок).

↓ КАК ДОБРАТЬСЯ ДО ЦЕНТРА ГОРОДА

Если вы только что прибыли в аэропорт, возможность добраться до центра города, как правило зависит от транспорта. Интервалы составляют от 20 до 30 минут (в том случае, если вы пользуетесь такси или трансфером, см. ниже), или 50 минут,



TLUSTÁ KOALA

RESTAURACE-PUB

SEDOVÁŽNÁ 8, PRAHA 1

Tlustá Koala, or "Fat Koala", will make you feel like you're in an authentic British pub. This two-floor Victorian establishment exudes an effortless elegance, creating a relaxing albeit glamorous atmosphere.

Tlustá Koala prides itself in its wide array of draft beer, ten types to be exact, and its kitchen, which keeps their chefs busy until 1:30 AM.

Tlustá Koala is ideal for cocktails, beer, or going out for dinner with some friends.

phone.:222 245 401

www.tlustakoala.cz

↓...BY PUBLIC TRANSPORTATION

Bus presents the cheapest way of reaching city center. It links the airport with the terminus of one of Prague's three subway lines. The drawback may be the fact that you need to buy a bus ticket, for which you'll need Czech crowns. Use the ATMs in the arrivals hall to get Czech crowns, rather than changing money at the overpriced exchange offices. You can either buy your ticket from the kiosk or the transport information desk in both arrival halls (open 7AM – 10PM), from the coin vending machines located right at the bus stop platform, or directly from the driver, although this will cost a couple extra crowns. The ticket price is 26 Czech crowns (1EUR / 1.3USD) for a transfer ticket that remains valid for the follow-up subway ride, or for a total of 75 minutes, plus an extra 13 crowns for larger pieces of luggage.

BUS # 119

This will probably be most people's choice as the 119 provides the quickest connection to the historical center. Depending on the time of day, it runs every 7 to 20 minutes and gets you to the A line of Prague's subway. Hop on, remember to validate your ticket, and don't get off until the final stop (Dejvická). The subway entrance is just next to where you get off. The bus runs from 4:18AM until around 12:10 AM at night.

BUS # 100

The 100 bus links the airport with the B-line of the Prague subway. Just get off at Zličín, the final stop. The 100 runs every 15 minutes throughout the day and every half hour after 7PM. The ride takes 15 minutes, but expect another 20 minutes of subway ride if you're aiming

если вы пользуетесь более дешевым и удобным общественным транспортом.

↓... НА ОБЩЕСТВЕННОМ ТРАНСПОРТЕ

Автобус представляет самый дешевый способ как добраться до центра Праги. Он связывает аэропорт с терминалом одной из трех линий пражского метро. Недостатком является то, что вам будут нужны чешские кроны, чтобы купить билет на автобус. Пользуйтесь банкоматами в зале прибытия, чтобы получить чешские кроны, а не менять деньги в обменных пунктах по повышенной цене. Вы можете купить билет в киоске или в информационном бюро в обоих залах прибытия (работает с 7 утра до 10 вечера), из монетных автоматов, расположенных на автобусной остановке, или прямо у водителя, хотя это будет стоить пару дополнительных крон.

Цена билета с пересадкой составляет 26 чешских крон (1EUR / 1.3USD). Он остается в силе для следующей поездки метро - в общей сложности действителен в течение 75 минут. Для багажа больших размеров вы заплатите следующих 13 крон. Обратите внимание на то, что торговые автоматы и шоферы не принимают иностранную валюту. Автобус удобный, чистый и безопасный способ сообщения с центром Праги для тех, кто хочет экономить. Однако, автобус может быть довольно переполненным в часе пик!

АВТОБУС № 119

Вероятно, большинство людей выберет автобус № 119, который обеспечивает быструю связь с историческим центром. В зависимости от времени суток, он ездит каждые 7 - 20 минут и соединяет пассажиров с линией пражского метро. Садитесь на автобус и не забудьте закопостировать свой билет. Поезжайте до конечной станции метро Дейвицка. Вход в метро находится рядом с местом, где вы будете выходить



ALGHERO
Aesthetics & Medical

Studio Aesthetic Medicine
we offer:

- skin rejuvenation
- permanent hair removal
- chemical peel
- lymphatic drainage
- beauty treatments
- Biostase Paris



Dlouhá 26, 110 00 Praha 1, Czech Republic
phone: +420 737 464 266, objednavky@alghero-ec.cz

www.alghero-ec.cz

FACTS & INFO

to reach the city center afterwards by metro. The bus runs from 5:30AM until around 11:50 PM.

AIRPORT EXPRESS BUS

The Airport Express bus service links the airport with the Hlavni nadrazi train station; it runs every half hour and the ride takes 40 minutes. Although part of Prague's public transportation system, special fares apply: tickets can be purchased solely from the driver and run for 50 crowns (with no extra luggage fees). The AE runs from from 5:00AM to 10:00PM.

TRAVELLING AT NIGHT

If you want to use the public transportation at night, look out for the # 510 bus, operating between midnight and 3.30AM and linking the airport with the tram at Divoka Sarka. From there, take the tram # 51 to the city center. Note that the night bus runs every 30 minutes.

↓...BY SHUTTLE

Various companies run shuttle door-to-door services, or drop you off at the city center. They are generally priced lower compared to taxis, and can be easily found outside the terminals. The CEDAZ minibus shuttles run every half hour and costs 120 crowns per person, dropping you off at the city center. The service operates between 5:30AM and 9:30PM. CEDAZ will also drive you directly to any given address, but you need to pre-book (call +420 211 111 111 or go to www.cedaz.cz). Other shuttle services include Prague Airport Transfers who accept credit cards (www.prague-airport-transfers.com).

из автобуса. Автобус курсирует с 4ч. 18мин. утра примерно до 00 ч. 10 мин.

АВТОБУС № 100

Автобус № 100 соединяет аэропорт с линией Б пражского метро. Выйдите на конечной остановке Зличин. Автобус № 100 ходит каждые 15 минут в течение дня и каждые полчаса после 7 часов вечера. Поездка продолжается 15 минут, но вас ждет еще 20 минут езды на метро, если вы на нем собираетесь добираться до центра города. Автобус курсирует с 5ч. 30мин. утра примерно до 23ч.50мин. ночи.

АВТОБУС AIRPORT EXPRESS

Автобус Airport Express (AE) связывает аэропорт с Главным вокзалом (Hlavni nadrazi). Он ездит каждые полчаса, и поездка длится 40 минут. Хотя AE является частью системы общественного транспорта Праги, здесь применяются специальные тарифы: билеты можно приобрести только у водителя и в цене 50 крон (без дополнительной оплаты за багаж). AE ездит с 5ч. утра до 10ч. вечера.

НОЧНЫЕ РЕЙСЫ

Если вы хотите использовать общественный транспорт в ночное время, обратите внимание на автобус № 510, который ездит между полночью и 3ч. 30мин. утра и связывает аэропорт с трамваем на остановке Дивока Шарка (Divoka Sarka). Оттуда добирайтесь на трамвае № 51 до центра города. Обратите внимание - ночной автобус ходит каждые 30 минут.

↓...НА МАРШРУТНОМ ТАКСИ

Различные компании используют челночное сообщение „от двери до двери „ или высаживают вас в центре города. Их цены, как правило, ниже, чем в такси, и такой тип такси можно легко найти за пределами терминалов. Челночные микроавтобусы CEDAZ ходят каждые полчаса, и проезд в центр города стоит 120 крон на человека. Микроавтобус курсирует с 5ч.30мин. утра до 9ч.30мин. вечера. CEDAZ вас также отвезет по любому заранее заказанному адресу(+420 211 111 111

↓...BY TAXI

Prague taxi drivers are notorious for overcharging tourists. Generally, you should be on the safe side with the fleet of AAA-labelled taxis waiting in front of the terminal. The ride will cost around 500 – 700 crowns. Don't shy away from contacting a competing company, but make sure to always check the price beforehand, whatever company you've chosen! You shouldn't ever have to pay over 900 crowns.

или посетите www.cedaz.cz). Другие услуги включают трансфер из Аэропорта Прага, где принимают кредитные карты (www.prague-airport-transfers.com).

↓... НА ТАКСИ

Пражские таксисты известны своим обчитыванием туристов. Поэтому на всякий случай пользуйтесь такси с надписью AAA, ожидающих перед терминалом. Поездка будет стоить около 500 - 700 крон. Не бойтесь воспользоваться услугами конкурирующих компаний, но заранее убедитесь в цене. Независимо от компании, которую вы выбрали, вы никогда не должны платить более 900 крон.



↓2. ARRIVING IN PRAGUE BY TRAIN

International trains arrive at the central station, Hlavní nádraží, often referred to as Praha hl.n. The station is directly connected with Prague's subway system and located right in the city centre. If arriving after dark, we highly recommend hopping on the subway (remember to buy a ticket) rather than walking out and through the surrounding park. Most of the station itself has just been refurbished and boasts a modern look with plenty of kiosks, drug stores and fast-food joints.

↓2. ПРИЕЗД В ПРАГУ НА ПОЕЗДЕ

Международные поезда прибывают на центральную станцию, Hlavní nádraží, часто называемую Praha hl.n. Станция непосредственно связана с пражским метро и расположена в самом центре города. Если вы прибываете после наступления темноты, мы настоятельно рекомендуем вам ехать на метро (не забудьте купить билет) и не проходить через окружающий парк. Большая часть самой станции только что была отремонтирована и может похвастаться современным видом с множеством киосков, аптек и ресторанов быстрого питания.

FACTS & INFO

3. ARRIVING IN PRAGUE BY BUS

Florenc is the central bus station; located in the city centre, it is also directly adjacent to Prague subway's station Florenc (a transfer station between the lines C and B). Like the central train station, Florenc has recently undergone a major facelift and now boasts a pleasant and clean arrivals & departures hall with kiosks and fast-foods (Burger King, anyone?), and most importantly a big screen showing the bus times and the respective platforms.

3. Приезд в Прагу на автобусе

Флоренц не только является центральной автобусной станцией, расположенной в центре города, но и в непосредственной близости от пражской станции метро Флоренц (переход между линиями С и В). Как и центральный железнодорожный вокзал, станция Флоренц недавно подверглась значительной реконструкции и теперь может похвастаться приятным и чистым залом приездов и отъездов с киосками и ресторанами фаст-фуд (желаете Burger King?), а самое главное - большим экраном с отъездами и приездами автобусов и с указанием соответствующих платформ.



4. ARRIVING IN PRAGUE BY CAR

Prague falls victim to traffic jams and a lack of legal parking spaces (streets with blue-marked areas on the side are reserved for residents and you run the risk of having your car towed if you park there). This is why we recommend using the so-called P+R's (park and ride) parking places, situated near all highways. Find more info at www.dpp.cz/en/parking.

4. Приезд в Прагу на автомобиле

Прага становится жертвой пробок и недостатком законных парковочных мест. Улицы с полосой синего цвета на стороне означают области зарезервированные для жителей. В этом случае вы рискуете, что ваш автомобиль будет отбуксирован при паркинге. Именно поэтому мы рекомендуем использовать так называемые стоянки парк анд райд (P + R) - парковочные места, расположенные вблизи всех магистралей. Более подробную информацию найдете на www.dpp.cz/en/parking.

PRAGUE'S PUBLIC TRANSPORTATION SYSTEM

Prague's public transportation system is generally reasonably clean, very efficient, runs on time, and its network spans the whole city; with the price of 32 CZK for a transfer ticket (1EUR / 1.3USD), it cannot be beat. If you don't need to venture out of the center, you can confine to using the subway (or metro, as it's called here) and trams; buses service the further-away neighbourhoods. Let's look more closely at the various tickets you can purchase.

Tickets can be bought from the numerous vending machines in all the metro stations and at many tram stops (always keep coins at hand), or from most tobacco stores / kiosks.

24-hour pass: 110 CZK

3-day pass: (72 hours): 310 CZK

ONE-OFF TICKETS

30 min. / 5 stops / no transfer ticket: 24 CZK, 90 min. transfer ticket: 32 CZK

Remember to validate your ticket upon first entering the metro / boarding a tram or bus. (i.e. slip the ticket into one of the yellow boxes and wait for the info to be stamped on it).

For more information about Prague Public transport visit www.dp-praha.cz or call the free info line 800 191 817.

СИСТЕМА ОБЩЕСТВЕННОГО ТРАНСПОРТА В ПРАГЕ

Общественный транспорт в Праге, как правило, достаточно чистый, очень эффективный и точный. Его сеть охватывает весь город. Цена билета 32 крон за поездку с пересадкой (1EUR / 1.3USD) очень выгодна. Если вам не надо выходить из центра, вы можете ограничиться метро и трамваями. Автобусы следуют в окрестности города. Давайте более внимательно рассмотрим различные типы билетов, которые можно приобрести. Билеты можно приобрести в многочисленных торговых автоматах на всех станциях метро и на многих трамвайных остановках (всегда имейте при себе монеты), или в большинстве табачных магазинов или киосков.

Суточный билет (24 часа): 110 крон

Трёхдневный билет(72 часа): 310 крон

РАЗОВЫЕ БИЛЕТЫ

30 минут / 5 остановок / без пересадки: 24 крон

90 минут /с пересадкой: 32 крон

Не забудьте закопостировать свой билет при первом входе в метро, в трамвай или в автобус. (т.е. вложите билет в одну из желтых коробок и подождите пока билет не будет закопостирован). Для получения дополнительной информации о пражском общественном транспорте посетите www.dp-praha.cz или информируйтесь по телефону на бесплатной линии 800 191 817.



ANTIQUE
U UHELNEHO TRHU

CZECHOSLOVAKIA USSR PROOF COMMEMORATIVE AND ANNUAL COINS

Skořepka 8, 110 00 Prague 1, Czech Republic
tel: +420 224 234 696
opening hours: Mo - Sa 10:00 - 18:00
www.numismatik-mince.cz

FACTS & INFO

For over 1000 years, Prague has served as the political, cultural and economic centre of the Czech state. Having been the seat of two Holy Roman Emperors during the gothic and renaissance periods, it also had the status of the Holy Roman Empire capital. Prague's history commenced in the year 870, although evidence shows the area had been inhabited since the Stone Age. The city flourished during the 14th century, under the reign of King Charles IV, who, among other deeds, ordered the building of the famous Charles Bridge or Saint Vitus Cathedral, the oldest gothic cathedral in central Europe, and Charles University, the oldest university in central Europe. Prague was then the third-largest city in Europe. Now home to some 1.2 million inhabitants, Prague became the capital of the newly set up Czechoslovakia in 1918, with the end of WW I and the dissolution of the Austro-Hungarian Empire. In 1992, Prague's historic center became a UNESCO world heritage site, and is currently one of the world's most popular tourist destinations.

На протяжении более 1000 лет, Прага служит политическим, культурным и экономическим центром чешского государства. Она была пристольным городом двух императоров Священной Римской империи в готическом периоде и в эпохе Возрождения. Прага также имела статус столицы Священной Римской империи. История Праги началась в 870г., хотя есть сведения о том, что область была населена с периода каменного века. Город процветал в течение 14-го века, во времена правления короля Карла IV, который, наряду с другими проектами, приказал построить знаменитый Карлов мост, кафедральный готический собор Святого Вита, и Карлов университет - старейшие постройки в Центральной Европе. В то время Прага была третьим по величине городом Европы. Сейчас здесь проживает около 1,2 млн. человек. После окончания Первой мировой войны и распада Австро-Венгерской империи в 1918 году Прага стала столицей вновь созданной Чехословакии. В 1992 году исторический центр Праги стал принадлежать к Всемирному наследию ЮНЕСКО, и в настоящее время является одним из самых популярных туристических мест в мире.



WWW.Z-MARKET.CZ



**BUY FOOD ON OUR
WEBSITE AND WE WILL
BRING IT COMFORTLY
TO YOUR HOME.**

WWW.Z-MARKET.CZ

BĚLEHRADSKÁ 78, PRAHA 2

TELEFON - ORDER: +420 224 256 725

TELEFON/FAX - ORDER: +420 222 521 279

YOU CAN SEND ORDERS, INFORMATION OR QUESTION ON E-MAIL ZAVOZ@Z-MARKET.CZ



THE ISLANDS OF RESISTANCE - BETWEEN THE FIRST AND SECOND MODERNITY 1985-2012

[9.3.2012 → 1.7.2012]

TRADE FAIR PALACE (VELETRŽNÍ
PALÁC), DUKELSKÝCH HRDINŮ 47,
170 00 PRAHA 7 - HOLEŠOVICE

It originated from the revolt against uniformity, the prevailing conventions and boredom. These words can perhaps describe more than two hundred works of art from the years 1985-2012 best, which are from 9 to March to 1 July 2012 presented by Academy of Fine Arts and the National Gallery in Prague at the joint exhibition – The Islands of Resistance - Between the first and second modernity 1985 -2012. Curators, married couple Jana a Jiří Ševčíkovi and Edith Jeřábková tried in this time to map out the best from the Czech art scene over the past two decades. The installation method of The Islands of Resistance in the Trade Fair Palace

(Veletržní palác) awakes numerous associations. Partial reconstructions of the former famous exhibitions also carry through preserved rare and often more than two decades, not displayed paintings, sculptures and other artefacts unmistakable stamp of authenticity. Curators endeavoured in the selection of exhibits to prevail stylistic and form-creating works whose influence can be monitored. In addition to objects from the collections of the National Gallery in Prague you can see the paintings and sculptures from the property of the City Gallery Prague, Gallery of Benedict Rejt in Louny, the Moravian Gallery in Brno, Museum of Art in Olomouc or gallery Klatovy / Klenová and a large number of private collectors . The Islands of Resistance, exhibition, in which name is hidden allusion to one of the topical essays philosopher Václav Bělohradský can be also seen there. Project Between the first and second modernity 1985-2012, however, also relies on extensive documentation, contained not only in the exhibition catalogue, but also in large anthology of contemporary texts, art historians, critics, philosophers and sociologists, coming simultaneously with the exhibition.

TIME MACHINES



**DECORATIVE ARTS MUSEUM, 17
NOVEMBER 2, PRAGUE 2
(UMĚLECKO-PRŮMYSLOVÉ MUZE-
UM, 17. LISTOPADU 2, PRAHA 2)**

In the permanent exhibition of Decorative Arts in Prague and other specialized exhibitions is located about one fifth of the collections, which total number includes more than 250,000 inventory items. Collections include glass, porcelain and ceramics, applied graphics and photography, furniture, woodwork, metal and different materials, jewelry, clocks, watches, textiles, fashion and toys.

Permanent Exhibition UPM, called Stories of Materials is divided according to the collections. The names of halls reflect their key topics: Votive Hall - entrance hall of exhibition dedicated to the history of the founders of the museum, The Story of Fiber - the hall of textiles and fashion, Art of Fire - hall of glass and ceramics.

The library is only presentational and is only opened to the public on Monday, 12 to 18PM on Tuesday, 10 to 20PM, on Wednesday to Friday from 10 to 18PM

www.knihovna.upm.cz

THE HUMAN BODY EXHIBITION



[10.3.2012 → 6.6.2012]

**KŘÍŽÍK PAVILON, VÝSTAVIŠTĚ
PRAHA – HOLEŠOVICE**

The exhibition shocked and also thrilled millions of people around the world. THE HUMAN BODY EXHIBITION brings dozens of brand new exhibits. By their size and number of exhibits that far exceed anything that has been in the Czech Republic to see.

**TRANSPORT SERVICE
CEN 24**



**www.dopravakrasa.cz
bus@dopravakrasa.cz
PERSONAL TRANSPORTATION**

**24h 365d • Personal transportation with
specially trained in Prague • 200000
kilometers • High quality of service
English speaking drivers • Full service
including high quality service**

phone: +420 777 600 683



THE SILVER TREASURE

[28.2.2012 → 27.5.2012]

MUSEUM OF CAPITAL PRAGUE,
KŘÍŽIKOVA 52, PRAGUE 8
WWW.MUZEUMPRAHY.CZ

City of Prague Museum acquired the Silver Treasure to its collections by the decision of the Prague City Council from the 7th of February 2012. But there is only a small part of this treasure presented to visitors: cups, powder boxes, bottles, pouches, purses and many other items including the production of material.

On 15th of November 2008 three Ukrainian workmen encountered the treasure in the wall during construction in the basement of apartment in the building situated in Dušková 20, Prague 5 Košíře. The workers reported it to TV reporters of NOVA TV and they recommended notifying the Police of the Czech Republic, which immediately carried out examination and takeover of the treasure.

Subjects from treasure were stored in the depository of the City of Prague Museum, which had to ensure their safety until the finding of the owner. He was not found. On 7th of February 2012 Prague City Council confirmed that the items become the property of the capital city and that they will formally pass to the Museum of Prague. Finders were rewarded by donation of 600 000 CZK, which was 10% of the treasure price, which was set at basis of expert opinion.

The finding included a total of 21 317 objects mainly of silver, as well as alpaca and base metals of total weight of 493 kg. 6770 pieces were coins of European and outside of Europe provenance, 14 547 subjects were small things like cups, bowls, flacons, powder boxes, pendants, plates, cups and saucer, shakers, jewelry, bags or tin cans with material designated for further processing.

Exhibits are presented in the state in which they were found in 2008. Due to space storage in basement near the chimney, is relatively low level of corrosion on a big surprise.

AMoYA

Karlova 2, Praha 1
info@artbanka.cz, +420 240 200 207, www.artbanka.cz
Open daily 10am–7pm

A Museum dedicated to young contemporary art with its presentation of the most leading figures of Czech art from the generation starting '68, as well as outstanding representatives of the youngest generation of Czech and Slovak artists. The art is exhibited in the baroque palace, Colloredo-Mansfeld, with its space that offers astounding evidence of the construction work performed under the communist regime on the historic monuments.



AMoYA

[PERMANENT EXHIBITION]

ARTBANKA MUSEUM OF YOUNG
ART, KARLOVA 2, PRAGUE 1
WWW.ARTBANKA.CZ , 80/160 CZK

Artbanka, a new project for support young contemporary art, helps young artists in their early careers by buying their works for a fair price and then offers them to lend in prestigious public and private institutions. This project supports young artists both financially and in the sphere of marketing and presentation of their work. Contemporary art is getting the attention of society and contributes its cultivation. The collection of the most interesting works of young contemporary art exhibits is exposed by Artbanka in impressive baroque palace Colloredo – Mansfeld in Artbanka Museum of Young Art (AMoYA) in Karlova (Charles) street.



In record time – in just 4 weeks – the neglected palace became the center for contemporary young art. The creative concept of AMoYA is an attractive presentation of contemporary art presented in an international context. AMoYA is meeting place for young artists and their teachers.

Artbanka Museum of Young Art fully opened its doors in June 2011.

CULTURE & EVENTS

REMBRANDT & CO.:
TALES OF THE ART
IN THE CENTURY
OF WELFARE

[10.2.2012 → 27.5.2012]

ŠTERNBERG PALACE
HRADČANY SQUARE 15,
PRAGUE 1 - HRADČANY

The exhibition Rembrandt & Co. represents on the soil of the National Gallery in Prague over 120 paintings of the golden age of Dutch painting from the 17th century, including more than 70 newly renovated, exposed or discovered works from the collections of NG. In addition, there are also 12 works loaned from the galleries as the Rijksmuseum Amsterdam, Amsterdam Museum, Staatliche Museen Berlin, Budapest Museum Szépművészeti, Lobkowitz collections and many others.

Rembrandt van Rijn, Frans Hals, Jan Steen, Jan van Goyen and Nicolaes Gillis – at the exhibition in the Šternberg Palace at Hradčany Square you can see famous work of the best Dutch artists. The extensive exhibition offers the opportunity to preview the former company in a new light and, to some extent, sets mirror contemporary Czech society.

Transport: Tram 22 - Prague Castle (Pražský hrad)

MIRO GALLERY –
EXHIBITION OF ARTISTS
– PHELAN O'HARA, PAUL AND
JOACHIM ROXI ELZMAN

[17.4.2012 → 3.6.2012]

MIRO GALLERY
KOSTEL SV. ROCHA
STRAHOVSKÉ NÁDV. 1/132,
PRAGUE 1
WWW.GALERIEMIRO.CZ

MIRO Gallery was founded in 1987 in Berlin. In April 1994 it was moved from Berlin to Hradčany in Prague and now it resides in the church of st. Roch in the area of Strahov Monastery. It's not uninteresting to mention that at the birth was even famous Czech singer Karel Gott. He helped the founder of MIRO Gallery Smolák by interest-free loan of one million, without which the concept wouldn't win the competition. Since then, MIRO Gallery organized over 150 exhibitions in Prague, dozens of concerts and became known as their humanitarian activities. Based on the published survey The Gallup Organization, USA (MF Dnes, 21st of June 2001) MIRO Gallery belongs to the "most popular commercial galleries in Prague."

Phelan O'Hara (* 1940, UK)
Roxi Paul (* 1948, Germany)
Joachim Elzmann (* 1953, Germany)

CHRIS NORMAN - HITS TOUR 2012 CONCERT



[29.4.2012 → 30.4.2012]

LUCERNA – THE GREAT HALL
VODIČKOVA 36/704
PRAGUE 1
TICKET: 600 CZK

Fantastic news for fans of the Smokie band! The original voice of this British legend, Chris Norman, is coming on his first tour in the Czech Republic.

Chris Norman was a cofounder of Smokie and the frontman from 1965 to 1986. The charismatic singer suffered a serious infectious disease in 1971 which also affected his vocal cords. After recovering was his voice rough and became the hallmark of the band. In 1972 they recorded their album debut, but without any big responses. At that time, the group was recognized by producer-composer duo Nicky Chin and Mike Chapman, who produced glam rock stars, such as Sweet, Mud and Suzi Quatro or the famous disco formation Hot Chocolate.

METALLICA



[7.5.2012 → 20:00]

SYNOTTIP ARENA,

U SLAVIE 1540/2A, PRAGUE 10

Metallica returns to Prague after four years and fans have something to look forward to, because the four will play songs from their same-named title from 1991 in honor of the 20th anniversary of the release of this legendary, often called "black" album.

Transport Hauer



We have available a new minivan Mercedes Viano 2.2 to 7 persons, including a set of guides will take you anywhere and at any time as you need.

Price from CZK 12 per km.
phone: +420 722 229 331

CULTURE & EVENTS

DIRTY YORK -
EUROPEAN TOUR 2012

[26. 4. 2012]

EXIT - US, SOKOLOVSKÁ 195,
PRAGUE 9

The blues-rock five Dirty Rock come from the Australian city Melbourne to the Czech Republic for the first time thanks to their European tour. A real treat for their fans of this style, but also for friends of southern rock, sharp guitar riffs and musical procedures will appear in the Prague's club Exit-U.s. The band, whose fame is spreading with a missile speed at the world's stages and harvests laudatory reviews of prestigious music magazines such as Classic Rock Magazine or Beat Magazine was the star on the Spanish festival – Azkena Rock Festival 2011 last year.

Last year Welsh rock band Manic Street Preachers celebrated twenty years since the release of their first single "Motojunk" and thanks to this anniversary they released a collection of their major songs under the name "National Treasures – The Complete Singles". With this selection of the best songs they are on the European tour and will arrive to Prague's Lucerna. Since 1991 this unique band has been able to push the boundaries of expressing their feelings, moods, anxiety and non-conformist opinions like no other group in the 90's.

MANIC STREET
PREACHERS

[25. 4. 2012]

LUCERNA - GREAT HALL
ŠTĚPÁNSKÁ, 61 PRAGUE 1

UFO (UK)

[26. 4. 2012]

ROCK CAFÉ, NÁRODNÍ 116/20
PRAGUE - NOVÉ MĚSTO

There are a lot of things to say about the UFO, like each band, which perform on the field of show business more than 40 years. About these bands is generally known that they have had a lot of tough periods, but also many successes. The Path of UFO began in London in 1969. During the 70's the UFO had already created their own unique musical style which was comfortably touching each nerve of listeners and their longtime production is now one of the gold fund of classic rock! A SINGLE concert was also confirmed for the Czech Republic! They return to the Czech Republic after



Unbroken

[28.4.2012]

PALÁC AKROPOLIS
KUBELÍKOVA 1548/27, PRAGUE 3

The legendary hardcore band from San Diego is returning to Prague after 17 years. Unbroken in the middle of 90's literally destroyed the stray schemes of hardcore scene, especially with their attitude. It was marked by huge amount of emotions, which were projected both into the opened personal utterances and political issues. Unlike other bands Unbroken weren't just a mere propaganda – they had burning honest energy, which was universal language between the band and the audience, and was able to remove all barriers. In the music alone they connected so different influences together as Slayer, Morrissey, Misfits or Chain of Strength and everything worked with a unique way. The concerts of Unbroken were famous for its wild energy but also consideration and total overlap. The band will arrive to Europe only for a few concerts in Prague and the one in Prague will be their final stop.



HALOTAXI, LTD.

IS NON-STOP TAXI SERVICE WITH A
TRADITIONREASONABLE PRICE AND
DECENT DRIVERS.WE PREPARE A TAXI
IN PRAGUE WITHIN 15 MINUTES.THE
DISPATCHER ALSO SPEAKS ENGLISH.



CUT OUT THE DISCOUNT COUPON
BELOW, YOU CAN USE REPEATEDLY.
ITS USE TELL DISPATCHING.

DISCOUNT COUPON ✂
HALOTAXI, LTD.
PRICE 18.90 CZK / KM
FORCE ON 31.12.2012



CULTURE & EVENTS

HOOVERPHONIC
WITH ORCHESTRA ON THE
CONFERENCE IN LUCERNA

[5.5.2012]

LUCERNA - VELKÝ SÁL
VODIČKOVA 36/704, PRAGUE

The astonishingly gifted pianist Rachel Z first came to the attention of the international jazz world with her acclaimed collaboration with saxophone great Wayne Shorter on his hit album *High Life*. A classically trained pianist and free experimenter with electronics and synthesised sound, her trio's sets include jazz-morphed versions of classics by artists as diverse as Sound Garden, Nirvana, Seal, Peter Gabriel, and Johnny Cash. In 2003 her album *Moon At The Window*, consisting of instrumental jazz interpretations of Joni Mitchell compositions, received universal praise.

At the end of January, the musicians of the Belgian group Hooverphonic fulfilled their dream. Alex Raymond & Noémie recorded all their hits from fifteen-year career with the symphony orchestra. They met with forty-two top musicians and recorded seventeen songs – there aren't missing songs like *Happiness*, *One Two Three*, *The Night Before*, *The Last Thing I Need Is You* or *Jackie Cane*. The album will be released in early March and on the fifth of May Hooverphonic will perform it with accompanying orchestra in Great Hall of Lucerna in Prague.

THE TRIO OF OZ
FEATURING RACHEL Z
& OMAR HAKIMS

[4.6.2012 → 21.00]

AGHARTA JAZZ CENTRUM

ŽELEZNÁ 16 PRAGUE 1



HAZMAT MODINE

[7.6.2012 → 20.00]

ROCK CAFÉ

NÁRODNÍ 20, PRAGUE 1



Hazmat Modine - those who will save you, when you feel like a beaten dog and there is no bottle of alcohol nearby. A bizarre, surrealistic blues that will scoop out a giant hole in the head and drive out the old blues reflex from it: depression is somewhere nearby, sadness to shot yourself. After seven years, Hazmat Modine came out from the basement of New York club Bleaker Street with a clear objective – to prove that blues has still the need for eccentric ingenuity and contact with the audience: "We do not want it to feel good. There is need to seduce it and set in motion. We are post-jug band, no nostalgic retro."

BRUCE SPRINGSTEEN & THE E STREET BAND

11. 7. 2012 PRAHA

SYNOT TIP ARENA

TICKETPRO
www.ticketpro.cz

**TICKETS: TICKETPRO, WWW.TICKETPRO.CZ
AND SAZKA SÁZKOVÁ KANCELÁŘ, A.S., WWW.SAZKATICKET.CZ**

**SAZKA
TICKET**

**IMPULS
Rádio**

deník

CTV CHANNEL

Katka

SUET ZIN

housar

HR

SEVING

LIVE NATION

WWW.LIVENATION.CZ

OUT OF PRAGUE

ALEXANDROVCI – EUROPEAN TOUR 2012

[26.5.2012]

KAJOT ARENA,

KŘÍDLOVICKÁ 34, BRNO



The famous Russian military crew will perform at seventeen exclusive concerts in their historically greatest concert tour in the Czech Republic. In May 2012, the crew returns to the Czech Republic with a message that it will be officially last gig until 2015. The whole set comes with the best Russian solo singers, excellent musicians and top dancers. A high quality and fully professional vocal, musical and dance performance combines great choreography which provides an unforgettable experience.

Dear lovers of chamber music, we honestly invite you to the 5th International Music Festival Kutná Hora which is traditionally prepared at 1st week of June. This year we have placed most of it to beautiful Barbora. You can look forward to well-known artists such as pianist Konstantin Lifschitz, clarinetist Michel Raison, Roman Patočka, Karel Untermüller and more. For the first time the festival will present an excellent Russian violinist Ilya Gringolts and from Czech artists we can mention very promising young violinists Martina Bačová and Josef Špaček. The chamber ensemble Baroco sempre giovane will perform at the festival for the first time.

INTERNATIONAL MUSIC FESTIVAL KUTNÁ HORA LE QUATRO STAGIONI

[2.6.2012 → 9.6.2012]

CHRÁM SV. BARBORY

BARBORSKÁ

KUTNÁ HORA, 284 01



ONDŘEJ HAVELKA AND MELODY MAKERS

[19.5.2012 → 19.30]

ZÁMEK SKALIČKA, SKALIČKA 15

ZÁBŘEH NA MORAVĚ 789 01



Ondřej Havelka and his Melody makers are dealing with authentic interpretation of the early popular music and top swing music since the beginning of the thirties to the early forties.

The varied repertoire includes an attractive mix of a wide range of genres, sweet and hot, from Hollywood musicals to the top performances of big band swing.

The style of concerts shows every detail of typical clothes, hairstyles and overall performance.

OUT OF PRAGUE

ADUTCH SYMPHONIC METAL BAND EPICA

[26.5.2012]

MASTERS OF ROCK CAFÉ

ZLÍN



The view of 100 attractive, sexy and barely dressed girls in rough RUGBY will change your life! Come and see, on 12th of May 2012 in Kajot Arena in Brno, the battle of 8 teams in an attractive sport. This is the second tournament of SEXY LEAGUE in the Czech Republic at which in addition to an exciting game you can see performances of the celebrities such as Dara Rolins and much more. The entire show will be moderated by Libor Bouček. SEXY LEAGUE, as a combination of luxurious and spectacular view of beautiful sexy girls, high quality sport performances and unbeatable show, is a product of the modern entertainment industry, which will smash into action faster than you realize!

EPICA is, next to the band Within Temptation and Delain, a support to symphonic metal of the land of tulips. In March 2012 they issued their new 5th studio album which was recorded by Nuclear Blast recordings. The band is extremely happy with the result and now it's up to master of mix, Sascha Paeth, to create a compact, nice and new album. European tour, which represents their new venture, is planned and we are pleased to note that two concerts will take place in the Czech Republic.

SEXY LIGA (SEXY LEAGUE) PARTY

[15.5.2012]

KAJOT ARENA

KŘÍDLOVICKÁ 34, BRNO



SLAYER

[6.6.2012 → 19.00]

ZIMNÍ STADION OSTRAVA –

PORUBA (SAREZA HALA/HALL)



One of the greatest metal bands, double winners of Grammy Award and the founders of thrash metal, the band Slayer, will play as a part of their tour to Czech fans. Musical production of Slayer is characterized as "brutal, inhuman and sinisterly fast." Slayer was founded by guitarists Kerry King, Jeff Hanneman and bassist, singer and front man Tom Araya in 1981 and the band played without a break until today. The only personal transformation through the years 1992-2002 was when acclaimed drummer Dave Lombardo had his own projects.

JUDAS PRIEST, SPECIAL GUEST: THIN LIZZY

[8.5.2012 → 20.00]

PARDUBICE – ČEZ ARÉNA

SUKOVA TRŽIDA 1735



THIN LIZZY are one of the better known names on the rock scene.

Blazing crew from Dublin exploded on the scene in 1969 with fresh sound, looks and attitudes. The band with unique Phil Lynott as a frontman reached many top moments and influenced generations of musicians with classic songs like „Jailbreak“ „The Boys Are Back In Town,“ „Still In Love With You,“ „Cold Sweat“, „Emerald“ and „Do not Believe a Word“. Most of music fans and experts agree that the imaginary top of Thin Lizzy were in 1983. It was followed by premature break-up of the band. Their last concert was played in September 1984. Just two years later was the world shocked when the singer, bassist and founding

member Phil Lynott died at the age of thirty-six years. Twenty-six years have passed, the world changed, but the amazing creation of Thin Lizzy is still not forgotten. Thin Lizzy got together in the new line-up to show their creations to new generation of music fans. Stellar line-up consists of Marco Mendoza (Whitesnake, Ted Nugent) and singer and guitarist Ricky Warwick. The band is successful among critics and fans when they had their UK tour. It was completely sold out!

Thin Lizzy Scott Gorham - Guitar Brian Downey - drums DARREN Wharton - Keyboards DAMON JOHNSON - GUITAR MARCO Mendoza - RICKY WARWICK BASS GUITAR - LEAD Vocals / Guitar

Pub "U Sejků"



Pub "U Sejků" has been situated on the village square in Hrusice since 1884. Hrusice and the pub got into the subconscious mind of people thanks to paintings and drawings of Hrusice native, painter and storyteller Josef Lada who was born on December 17th, 1887 in Hrusice. We invite you to explore the picturesque Hrusice, the memorial of Josef Lada or sitting in our pub where you can order a beer from tank, small snack or satisfy your belly with Czech meal like from your mother.



We look forward
to your visit
Hrusice 25
tel. č. 602 610 315

www.usejku.cz



Czech cuisine

the classic, which doesn't get old

In recent years, the gastronomy in the Czech Republic is experiencing a great boom.

Czech people are discovering new meals associated with Western and Eastern cultures, experimenting with ingredients, which until now they could not even speak properly and to their own detriment they are forgetting own ancient culinary art. The Czech cuisine is one of the richest traditions and it still enjoys great worldwide popularity.

Czech cuisine arose from practical needs to manage on what one could produce alone. For this reason, there has always been great emphasis on legumes, cereals, potatoes and naturally meat. And of course, the sauces – the Czechs are well-known thanks to them. It is true that it is not exactly the healthiest cuisine. Indeed, the Czech food in combination with your favorite delicious beer can easily make you a few more pounds. Therefore, it's necessary to eat Czech food in rational consume style. But there is one thing that can't be denied in Czech cuisine – it can create wonderful flavors from seemingly simple ingredients.

Czech cuisine has grown along with its nation. They were originally influenced by Celtic and later Slavic origin of the inhabitants of the Czech state. Then, of course, there were no supermarkets, so people had to manage with hunting, gathering or animal and crop producti-



on. In those days were cereals, legumes, berries and mushrooms (beside the enormous love for beer the Czech people love mushrooming) widely consumed. Highly prized was milk, eggs and cheese. The meat, on the contrary, was rarely included in meals. But meat became a main ingredient and the typical preparation started – from cooking to grilling to smoking the meat. Czech cuisine experienced a huge boom in the

16th century when it began to import exotic spices, animals and fish. On the one hand, people began to enjoy the fruits of foreign gardens; on the other they finally clarified what are the advantages of domestic ingredients and how to handle them.

Great influence on Czech cuisine was the discovery of America and especially potatoes. Czech people got to like potatoes and they created a lot of possible modifications of the plant. Another important discovery was followed in the 19th century, when the refined sugar was invented, and with that came dumplings. Who would have thought that dumplings will become one of the most typical features of local cuisine? A typical feature of Czech cuisine is already mentioned sauce, usually served with meat (the basis is the broth and white flour). The most commonly used meat of Czech cuisine is chicken, pork and beef. So meat from animals that were breed in Czech farms in the beginning of last century. Venison, mutton and fish are rather rare on the menu (because of higher purchase price). Another

distinguish feature are side dishes – variously prepared potatoes, pasta or legume. Typical Czech side dish also is the vegetable mixture. However, this side dish is mostly a relic of the former regime and supporters of modern gastronomy make every effort to eradicate it from restaurant menus.

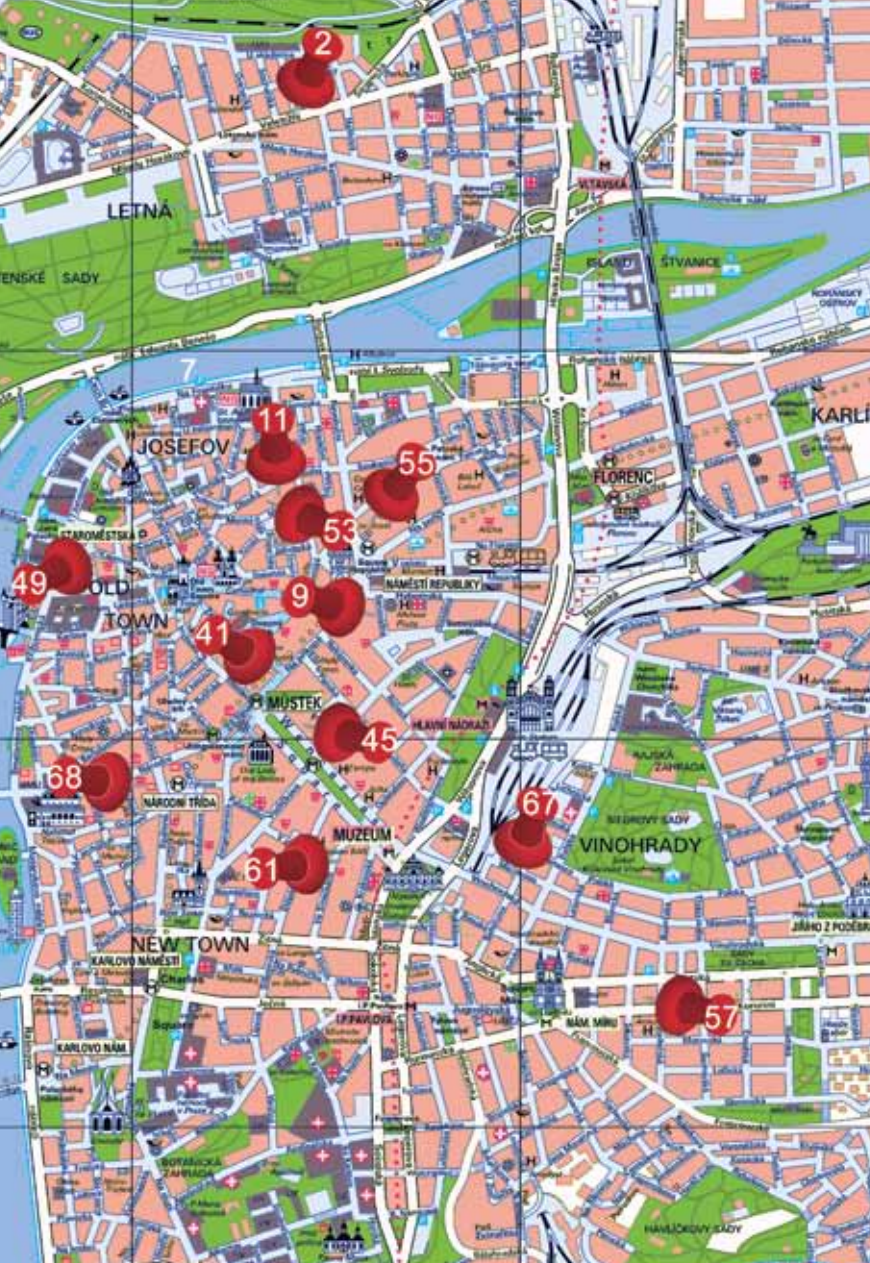
The traditional Czech dishes include sirloin in cream sauce, “The Moravian sparrow”, Pork with cabbage and dumplings. Another typical dish is potato pancakes which can be eaten alone or as a side dish to meat. It is also worth to mention the cheese from Olomouc, Prague’s ham or pies from Chodov.

Czech cuisine just had, has and will have something to offer. It won’t make you athlete but that’s the worst thing that you can say about it. Czech people, as a flexible nation, can almost manage to live with little and use every available ingredient which they found in their area. The result is a completely unique harmony of flavors, which you will not find in the rest of the world. And, of course, delicious beer. It can never be missed on the table.



PAGE
NUMBER





2

11

55

53

9

41

45

68

61

67

57



ABSINTHERIE

Náměstí Franze Kafky 14/8, Prague 1 -
Staré Město, www.absintherie.cz

Dear

I live in Czech Republic, specifically speaking in Prague, and I work in absintheria. What the hell is that? Try to separate the first seven letters! Absinthe, famous beverage of poets, painters, musicians and artists of all types.

When I recently checked the Lonely Planet's websites I found among hot topics article "The world's best booze (and where to drink it)". I absolutely agree with connection of our country with absinthe and becherovka. But where can you really taste good absinthe in Czech Republic? Everywhere? Hardly, and that is why I would like to invite you to our company. Absintheria is of course all about absinthe. In Czech Republic you find similar company nowhere. In addition, L'or special drinks company, the owner of our absintheries is one of the biggest producers of absinthe in Czech Republic, as well as in Central and Eastern Europe. You find both our absintheries near Old Town Square in Jilská street and Franz

Kafka Square. So, welcome in our absintheria, where we will take care of you as good as we can. Let us prepare you Absinthe in the proper way as it should be served by pouring cold water over a cube of sugar resting on a slotted spoon. Come and taste the whole range of Czech and Swiss Absinthe. During your stay here you can examine the exhibition of Absinthe and necessary accessories as absinthe spoon and glasses. At the same time you can enjoy our specialties such as absinthe ice cream, absinthe cakes and coffee. In our shop you can buy only high quality Absinthe and other assortment for low price, as well.

Prague is a beautiful town. People arriving from all over the world here, are looking for history, fairy castles, hundreds of towers and so on. But in last decade a growing number of people come to Prague for fun. This fun is almost always associated with alcohol, at least in Czech Republic. And along with Czech Republic is in the world associated absinthe. So, is it not a good idea, to stop for a while in our psychedelic and atmospheric places and taste something new, something legendary and typical for country of your stay?

In Czech Republic is no better place for this purpose and who knows, maybe is nowhere in the world.



KŘEMÁ U PAVOUKA

Celetná 17, Prague 1,
GSM: +420 777 015 000,
www.krcmaupavouka.cz

Welcome to the tavern, in which you will be taken several hundred years back in time as far back as the Middle Ages! From all corners of our tavern you will feel rough, yet romantic atmosphere of this age. Neither any of the details, nor any of the senses have been omitted. You will enjoy your time watching swordsmen, jugglers as well as charming dancers, listening to period music, the wine and beer will flow, and you will be eating your meal the way reflecting the spirit of time, with your hands!



BARÁČNICKÁ RYCHTA

Tržiště 23/555, Prague 1 - Malá strana,
Tel.: +420 257 532 461,
www.baracnickarychta.cz

If you are going to the castle and hadn't lunch yet or you are coming back from the visit of castle and want a dinner, you should stop for a traditional Czech meal in Baráček Rychta and discover delicious Czech cuisine. For beer lovers there are Svijany and Pilsen beer. You can soak slightly nostalgic and relaxing atmosphere and after good meal you can move into the local social club "SalOn" where interesting cultural events take place or where you can organize private or corporate events including catering of local restaurant.



LUKA LU

Újezd 33, Prague 1,
GSM: +420 257 212 388, www.lukalu.cz

Possibly the only Bosnian-Italian restaurant in Prague can be found a few steps away from the Charles Bridge. The name of the restaurant translates as "Port Lu", which means that Mediterranean cuisine is their specialty. The colourful and eclectic interior definitely contributes to the atmosphere of a Yugoslavian port. Guests can choose from sitting inside the restaurant, or in the outdoor garden- ideal for breezy summer days.



NOVOMĚSTSKÝ PIVOVAR

Vodičkova 682/20,
Prague-Nové Město,
GSM: +420 602 459 216
www.npivovar.cz

If you want to taste real Czech beer and enjoy the atmosphere of a classic old Czech "inn", we can recommend you to visit the New Town Brewery (Novoměstský Pivovar). We have several reasons for that: they make own 11° unfiltered beer – super tasty beer and traditional Czech dishes like soup, baked or knee sirloin. Everything in the stylish and large interior (More than 400 places ensure that you will find your spot). It is also possible to take a tour through the brewery with an expert commentary. WE recommend to taste the local beer brandy.



ALPSKÝ DVŮR

Jenštejnská 2, Prague 2,
tel: +420 222 516 071

www.alpskydvur.cz, Opening hours:
Mon - Sun 11:00 - 23:00

Come to taste the Czech and Bavarian specialties in cozy and stylishly decorated restaurant Alpský dvůr. We will recommend Czech duck or roasted Bavarian pig. All meals are prepared from fresh and seasonal foods. You can look forward to the Czech beer Krušovice or wheat beer from Bavaria. You can sit in the non-smoking section by the fireplace, in the smoking floor, or on the outdoor terrace in summer. The whole space is air-conditioned and has Wi-Fi access. We wish you good appetite!



HLOUPÝ HONZA

Školská 12, Prague 1 - Nové Město,
tel: +420 222 230 036

Do you know how the genuine Czech pub of 21st century looks like? If not, make sure to visit the restaurant Hloupý Honza. They bet on domestic clients accustomed to the old Bohemian tradition. The pub bears the epithet "The 1st original inn of Rudolf Jelínek in Prague". You might know from where the rich menu of spirits comes. In addition, there are six kinds of premium beers. The kitchen doesn't have to be mentioned very long. It provides everything what our grandmothers cooked.



DYNAMO

Pštrossova 220/29, Prague 1,
tel: +420 224 932 020,

www.dynamorestaurace.cz

If you are in the center of Prague and nice impression is important for you, visit the restaurant Dynamo. In 1999 was this restaurant awarded for design of interior, which was created by Olgoj Chorchoj and Aleš Najbrt. The restaurant offers specialties of European cuisine, a huge selection of malt Scotch whisky and wines from Moravia and the rest of the world. Apart from the interesting interior and good food or drink the Dynamo restaurant offers an exhibition of works of Joan Miró who is one of the greatest surrealists, the icon of modern arts. The museum, which doesn't have his works hanged, as if never existed. Enjoy your meal and great experience.



CHAPADLO

Nuselská 44, Prague 4,
tel: +420 241 404 337,
www.chapadlo.com

The restaurant Chapadlo in Nusle features a complex modern concept. Modern gastronomy goes hand by hand with well-sophisticated interior with clean lines and natural elements. Here are special offers of food prepared every month. You can find there even a 400g steaks. You can also use the offer of lunch menu. Drink arsenal is filled with a wide offer of beers from Pilsner brewery and wines from the whole world.



GURMÁN FLINT

Křižovnická 61/12, Prague 1,
tel: 224 282 129,
www.gurmanflint.estranky.cz

Equipped with a sea club and night bar, the restaurant Gurmán Flint offers not only good food and cheap drinks, but also a pleasant interior adorned with antice trinkets and paintings. The atmosphere will transport you into a time of sailors and pirates. Their menu boasts traditional Czech specialties, complimented by a lunch menu and treats from all over the world. They have a variety of beers on tap – Pilsner Urquell, Kozel 10°, 11° and dark Kozel, Hoegaarden 14° and Staropramen 10°.



VESELÝ BIZON

Štefánikova 44, Prague 5-Smíchov,
tel: 257 318 894, www.veselybizon.cz

This steak restaurant located in Prague's Smíchov offers a pleasant and relaxing atmosphere. Aside from South American steaks served fresh off the grill, this restaurant also offers a wide assortment of delicacies from various types of meat. The names of the dishes as well as the overall style of the restaurant will transport you straight into the Wild West. Something along the lines of a 300 gram "Steak of a hilarious cowboy"- Uruguyan rump steak with barbecue and vegetable skewer, sounds quite promising. The restaurant also has a summer garden, as well as Pilsen beer on tap.



PIZZERIA RIALTO

Sokolovská 33, Prague 8-Karlín,
tel: 602 661 444, www.rialtopizza.cz

Does this name of the Karlín's pizzeria sound familiar? It should, because it's named after the famous Venetian bridge Ponte di Rialto. The real atmosphere of an Italian seaside resort will breathe on you inside the pizzeria. The dominant view point is the picture of this famous bridge across the entire wall. You can find the original Italian food with remarkable tastes, inspired by Napoli and North Italy. Beyond that you can have a favourable lunch at Monday till Friday or you can order food straight to your home.



PIZZERIA KMOTRA

V Jirchářích 12, Prague 1,
tel: 224 934 100, www.kmotra.cz

If you want a really good pizza prepared from high-quality ingredients or fresh home-made pasta, Pizzeria Kmotra is the right choice for you. This pizzeria is proud of itself because it's the oldest one in Prague and from the early beginning of its activity is emphasizing quality and freshness of ingredients and the reasonable price. The restaurant has separated rooms for smokers and non-smokers, has a dispose of a salon for 35 guests and you can find two wide TV screens when you don't want to miss any important sport match. You can taste either traditional Italian wines or selected Czech wines.



RESTAURANT V KORUNNÍ

Korunní 39, Prague 2-Vinohrady
tel: + 420 222 513 356,

www.vkorunni.cz

The restaurant V Korunní has been an inseparable part of cultural and social life of Královské Vinohrady. This restaurant is popular because of very good food of Czech cuisine, but there is even a rich selection of international specialties. The beer lovers will be pleased because the restaurant V Korunní offers selection from four kinds of popular Czech beers – Pilsner Urquell, Gambrinus, Radegast and not the last Kozel). If you desire a privacy, the restaurant has a dispose of lounge with a capacity of 15 persons. arden 14° and Staropramen 10°.



DEMÍNKA

Škrétova 1, Prague 2-Vinohrady,
tel: + 420 224 224 915,
www.deminka.com

Demínka is well known to most people living in Prague. The grandmother of Prague's restaurants. Its beginnings extends to the ages of the first republic. Excepting the small pause, it's functioning constantly. Today's Demínka connects to the traditions of the originál one and place emphasis on the great services for consumers in pleasant ambient. That's why it has connected it's powers with Pilsner's Prazdroj and placed itself beside the others in the fellowship Pilsner Urquell Original Restaurant.



U ŽÍZNIVÉHO JELENA

Vltavská 15/523, Prague 5-Smíchov,
tel: + 420 257 322 525,

www.uziznivehojeleny.cz

The restaurant U Žíznivého Jeleny is located in the proximity of the brewery Staropramen at Smíchov. Its history has roots on the 1896. The restaurant recently went through an extensive reconstruction and is able to comfortably accommodate even larger groups of guests. The restaurant has a dispose of non-smoking area with high capacity of seats located into the historical cellars. You will enjoy the Czech cuisine and firstly the meals from the game. To the good meal inseparably belongs delicious Czech beer or wine.



ISTANBUL KEBAB

Politických vězňů 933/17,
Prague 1-Nové Město, tel: 777 917 380,
www.istanbulkebab.cz

Are you longing for Turkish food and time pushes you? Visit Istanbul Kebab where you can choose from a variety of good meals. We recommend trying the Turkish pizza and you will be surprised with its form. Vegetarians will be able to choose meals too. As mentioned at the beginning, Istanbul Kebab belongs to the fast food category so the opportunity to take away your food is natural thing. However when you have time you can find seating there and you can taste the traditional Turkish tea along.



SAKURA RESTAURANT
SUSHI BAR • JAPANESE CUISINE
ORIENTAL FOODFARE

Přijďte si pochutnat do skvělých sushi barů ...



PRAHA 4
BUDĚJOVICKÁ

Budějovická 13
Praha 4
774 887 877

NOVĚ
Otevřeno

TRADIČNÍ I NETRADIČNÍ SUSHI
A JINÉ ASIJSKÉ SPECIALITY

ROZVOZ JÍDEL



SAKURA GARDEN
ČERNÁ RŮŽE

Na příkopě 12
Praha 1
tel.: 775 725 872



SUSHI SAKURA
DEJVICE

náměstí Svobody 1
Praha 6
tel.: 774 785 077



SUSHI SAKURA
KARLOVY VARY

Zeyerova 1
Karlovy Vary
tel.: 777 912 311

www.sushisakura.cz



U MATĚJE KOTRBY

Křemencova 1738/17
Prague 1-Nové Město,
GSM: +420 224 930 768,
www.umatejekotrby.cz

In the historical part of Prague, more precisely, on the corner of Křemencova and Opatova Street, is situated very cozy restaurant in the spirit of the past. The ancient atmosphere is evoked by the name of this restaurant and also with its interior. You can sit comfortably in a picturesque garden with fountain. It is worth to mention the traditional old Czech dishes that are served with dewy Czech beer Pilsner Urquell or the selection of Moravian wines. Also the staff is very pleasant.



RESTAURACE ZORBAS

Ve smečkách 13, Prague 1,
tel: +420 224 914 416,
+420 608 308 990,
www.zorbas.cz, info@zorbas.cz

Greek specialties only 200 meters from Wenceslas Square for Czech low prices... Do you love Greek specialties? You would hardly find better and well-known restaurant than the Zorbas Restaurant in the center of Prague. You can choose from a wide variety of Greek delicacies and beside the traditional good food the restaurant offers a large selection of wines. The guests can choose from 8 kinds of Retsin and 40 kinds of Greek and Cypriot wines. Greek music will make your visit very pleasant.



GROTTA

Ostrovského 7, Prague 5
tel. 251 562 750
www.restaurace-grotta.cz

The restaurant Grotta, situated at Smíchov, is definitely one of those, where you wish to return again. For several reasons. Firstly thanks to the local gastronomy that makes honor to the good hospitality. In the menu you can find international specialties and old Czech classics in modern style. Furthermore, we are sure that you will be impressed by the beautiful interior located in the basement of typical Smíchov house with vaulted ceilings and stone walls.



RESTAURANT DRUHEJ SVĚT

Prague 1, Mezibranská 4,
Tel: +420 224 941 282
www.druhejsvet.unas.cz

The restaurant is situated in the locality of Prague 1. It has a large selection of dishes. You can choose food of the 74 items. Even if you have a gluten-free diet prescribed, you can choose food from the menu. Non-smokers will be delighted by the non-smoking part of the restaurant. Surely, you must NOT forget the traditional Czech drink "Kofola" which is even draughted here. For alcohol lovers there is selection of these draughted drinks: Frisco, Gambrinus, Pilsner Urquell and Velkopopovický Kozel. Lunch menu is served from 11:30AM when



Baráčnícká rychta

restaurace



**A real Czech restaurant with
a slightly nostalgic and relaxing
atmosphere, delicious Czech cuisine
and Czech beer genuine as Svijany
and Pilsner beer.**



Tržiště 25, Prácheň 1 – Malá Strana.

Tel.: +420 257 532 461

Open hours:

Mon - Sat: 11am - 23pm

Sunday: 11am - 11pm

100% Discount
with this magazine

TEA/CAFE



CAFÉ LOUVRE

**Národní 22, Prague 1,
tel. + 420 224 930 949,
www.cafelouvre.cz**

Legendary coffee-lounge Louvre have always been and still is among the top of Prague's café industry. Its origin already dates from the year 1902 and it continues in the errant tradition of company. Among the famous clients belongs such a tremendous persons like Franz Kafka, Karel Čapek or Albert Einstein. From of old, sport belonged to the right café. So there is possibility to play chess or billiards during your sitting. Awesome tip for morning's breakfasts! Every morning you can choose from a wide range of Czech and foreign newspapers.



CAFÉ VITKOV

**Národní památník na Vítkově (National memorial on Vítkov), U památníku 1900,
Prague 3, Open: Wed - Sun 10 - 18**

If you decided to visit the National Memorial on Vítkov, it's almost natural to visit Café Vitkov. Very modern interior and friendly prices will delightfully surprise you. There is also a cozy sitting in the garden with a great view of the city. Besides, they held exhibitions, debuts of books, cultural events, concerts and much more. In the case of event it's possible to extend the opening hours. There isn't anything better to sip a coffee and watch the 100 towers of Prague.



CAFFÈ PER LEI

**Karlova 154/17 Prague 1
Opening hours: 10-22h**

This famous café is located in the heart of old Prague center on the royal route. You can be pleased by stylish and comfortable interior, excellent international cuisine, delicious cakes and excellent Italian coffee brand Tonino Lamborghini. For your convenience you can find also Wi-Fi connection. We confirm the excellent and courteous service.



LE PATIO

**Národní 22, Prague 1,
tel: 420 224 934 375,
www.lepatio.cz
Opening hours: Mon-Fri 8-23,
Sat-Sun 9-23**

Renowned restaurant Café Patio on National Avenue (Národní třída) doesn't need to be advertised too much. The strategic location in the very heart of the city, noble interior with soft lights, the smell of coffee – everything in the new concept and with the new title Le Pátio. Everything else remains, just two things are changed - dramatically improved services and especially emphasis on gourmet quality cuisine. You can enjoy your delicious meals in the garden with marquee, of course, in the sunny months.

KOBE

Steak Grill Sushi

Place where the real
art of gastronomy is born.

Sushi by **SUSHI** POINT

Meat from special unique breeds

Lamb specialities

Fresh fish specialities, tempura and noodles

Daily special offer

Kids menu and kids playground



Kobe

Václavské nám. 11
Praha 1

reservations: 224 267 248

Kobe OC Chodov

Roztylská 2321/19
Praha 4

reservations: 272 075 453

TEA/CAFE



CAFÉ LOUNGE

**PLASKÁ 615/8, Prague 5,
tel.: 257 404 020, 733 182 208,
www.cafe-lounge.cz**

Voted best cafe in the 2010 Czech Bar Awards, this Malá Strana spot is the height of sophistication. Whether you are stopping by for a delicious breakfast, afternoon coffee or evening glass of wine, you will enjoy elegant surroundings and tasty treats. The cafe's terrace shares a boundary with the historic Hunger Wall, so in the summer stop by for a private moment. The chef Michal Skuhrovec is working with seasonal ingredients and will love to show his skills to you, same as the pastry-cook Magdalena, since all the sweets are made in-house. The café serves freshly roasted coffees, either blended or single origin.



DOBRÁ ČAJOVNA

**Václavské náměstí 14,
Prague 1, www.tea.cz**

Dobrá čajovna located in the lower part of Wenceslas Square, was opened on July 1st, 1993. Even in the post-revolutionary times, it managed to attract attention (Before then, tea rooms were not as popular.) Make sure to visit this unique space, where you can choose from the tea room's extensive selection of teas. The staff consists primarily of men, who are called "Tea Journeyman", and are trained by so-called "Tea Masters", who are schooled and trained in their knowledge of tea and its preparation.



CAFÉ AMANDINE

**Na Moráni 17, Prague 2,
tel. +420 222 524 305,
www.cafeamandine.cz**

Take our advice and head down to this cafe, you'll find yourself transported into Paris in the 1930s. The one-of-a-kind dishes and coffee, coupled with exceptionally pleasant service, makes for a very enjoyable experience. The interior is perfected down to every single detail- this includes antique window pane created by painter Karel Balcar. The cafe prides itself on its breakfast menu. This offer is listed on a special menu, where you can choose from their extensive selection. The food is then prepared in a stylish bakery, which is also part of the cafe's kitchen.



SHADOW CAFE

**Újezd 16, Prague 1, tel. 774 742 369,
www.shadowcafe.cz**

Prague's Malástrana (Lesser Town) is home to Shadow cafe - an excellent mix between a cafe, bar, and club. During the day you can stop by for a get-together, and in the evening you can enjoy a cocktail and listen to music, courtesy of the cafe's DJs. You can look forward to a pleasant atmosphere alongside with friendly service. The venue's specialty is Guatemalan rum aged in oak barrels, and if you get hungry you can always try one of their baked paninis.



it brings peace and evolves confidence in life



Thai massages in Prague

Traditional thai massage is being practised in unchanged form for longer then thousand years. Thai massage will clear your body and mind from tiredness , myotanus and will recharge you with a lot of energy. It stimulates your lymphetic circulation, and makes your bones and muscles more flexible to move. Our special trained therapists with many years of experience will make your body feel free again

Shanti Thai Massage

Praha (roh Kofenskáho ulice), 150 00, Praha 5

Open daily: 10 to 21 hours, Tel: +420 257 312 946

Email: info@massageshanti.cz

www.massageshanti.cz

WHERE TO SLEEP

HOTEL & RESIDENCE
ROYAL STANDARD***+

Rašínovo nábřeží 38, Prague 2,
tel. 224 916 060, www.standard.cz

Offers cosy accommodation in luxurious two-bedroom apartments known for their splendid view of Prague Castle and the Vltava (Moldau) River. Our hotel rooms are practical, yet comfortably furnished. Convenient location with easy access - even on foot - to Prague's historical monuments and cultural buildings. This Art Nouveau building is a national historical sight built in 1913 in the centre of Prague, on the bank of the Vltava River between the National Theatre and the High Castle (Vysehrad). Both metro and tram stops are within walking distance. **Price 39–173 EUR**

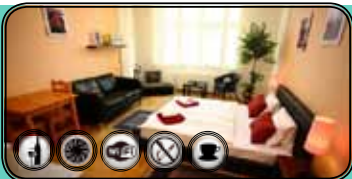


HOTEL ZLATÁ ŠTIKA

Štrossova 127, Pardubice, tel. 466 052
100, www.zlatastika.cz

Golden pike offers accommodation in a quiet part of Pardubice, just a few dozen meters from the historic city center. The hotel has a restaurant, pub Formanka, wine cellar, conference room and lounges. Spaces are suitable for congresses, seminars, training, corporate celebrations and family events. There will be Wi-Fi internet access in all rooms, parking, safe, a lounge for business meetings, always dry cleaning and reception.

Price: 1400 CZK per single

APARTMENTS ***
WENCESLAS SQUARE

Václavské náměstí 48836, Prague 1,
tel. 222 211 409,
www.prague-apart-hotel.cz

Apartments are located in the very center and heart of Prague on Wenceslas Square. Its ideal location placed in the middle of social and cultural life is suitable for all categories of visitors from businessmen, tourists, families and small or large groups of friends heading for fun. They are offering you comfort of the feeling as home for the unbeatable prices. All apartments have fully equipped kitchen, bathroom and restroom. Get 10% discount with Prague Bedeker issue!

Price from from 50 EUR



HOTEL SILENZIO****

Kozlovská 2, Prague 6, tel. 233 086 600,
www.silenziohotel.cz

An oasis of peace surrounded by greenery, yet close to all the important historical sites, the airport and shopping avenues, Hotel Silenzio is suitable for the tourist and business clientele alike. It has its own parking lot, and offers a complementary infra-red sauna and internet access. Public transportation is within 300 metres. **Special offer for the readers of Bedeker Prague! Book three nights and get one FREE, or book one night at the suite for the price of a regular room.**

NEW YORK
ADDRESS GUIDE
AND GET 20% DISCOUNT
WWW.NAMJAI.CZ



Nam Jai

TRADITIONAL THAI
& INDIAN MASSAGE



THAI MASSAGE

Thai Massage
Thai Oil Massage
Thai Herbal Massage
Thai Hot Stone Massage with Oil
Thai Back and Head Massage
Foot Reflexology Massage
Facial Massage
Couple rooms available



Come and relax your mind and body at Nam Jai with one of our authentic treatments. Enjoy a deep tissue Thai Massage, relaxing Thai Oil Massage or an energising, relaxing or detoxifying Thai Aroma Oil Massage. We have 5 different Oil mixes on offer: Relax, Detox, Happy Skin, Energy, Bye-Bye Orange Peel (All oils are paraben and paraffine free). Or simply have your feet relaxed with a proper foot reflexology or get relief from your back ache with a back and head massage.

We look forward to have you as our guests!

Kaprová 11, Josefov, 110 00 Praha 1, 1 minute from Old Town Square
phone: +420 222 328 747, open EVERY DAY from 10 h - 22 h



We accept Euro and CZ-Dollar (for exchange rate)

BARS



LATIMERIE

Slezská 74, Prague 3-Vinohrady,
tel: 224 252 049, www.latimerieclub.cz

The modern and also very comfortable interior offers a chance to retreat from the hustle and bustle of the city center. Nestled away in Prague 3's quaint Vinohrady, Latimerie is a cross between a cafe and cocktail bar, interlaced with low-key dance music. It's the perfect place to chat, or just listen to music and relax. The venue is very open and spacious, interspersed with original paintings, creating a modern yet unique atmosphere. You certainly won't be bored there, especially if you visit the club during one of its extravagant events, including show-stopping transvestite shows.



LA MAFIA

Truhlářská 23, Prague 1 (150 m from
Palladium Shopping Center),
GSM +420 775 274 718,
www.lamafiaclub.cz

This original club & show bar is decorated in the spirit of American gangster movies. It is located in the magnificent rooms of the original gothic dungeons. The capacity is 250 visitors and 100 of them can sit. Stylish design, lounges, dance floor, long cocktail bar and themed parties like Casino, Hawaii, Pirates, Pampers night or successful Wildlákof. That's LaMAFIA. It has everything what demanding client could wish for.

SALOON BARÁČNICKÁ
RYCHTA

Tržiště 23/555, Prague 1,
GSM: +420 257532461, www.baracnickarychta.cz

This place has always been the meeting place of people in various cultural events such as concerts of various genres, dance nights, theater of small scenes, cabarets and much more. You would hardly find a saloon like this in Prague. It seems as if time has stopped. Its unique atmosphere and location will conquer you as well as excellent traditional Czech cuisine, delicious beer and friendly staff. If you don't select from the rich program, you can select "Baráčnická rychta" for private or corporate events. There will be always prepared for you – "With respect and a little extra pleasure!"



HARLEY'S BAR

Dlouhá 18, Prague 1, tel: 227 195 195,
www.harleys.cz

Very popular and well-known music bar in the very heart of the city. The main motives of mentioned place are prestigious brands Harley-Davidson and Jack Daniels. All kinds of DJs are caring about the music background and it just depends on you, if you want to visit one of the many thematic music nights, or the various mix of music genres. Thanks to great attendance we recommend to choose early coming because of the possibility of using the comfortable.



AGHARTA JAZZ CENTRUM

**Železná 16, Prague 1, tel: 222 211 275,
www.agharta.cz, LIVE MUSIC DAILY
FROM 9PM jazz club&bar daily 7PM -
1AM**

When visiting Prague, you should not miss the experience of: an ultimate atmosphere of a historic basement dating back to the 14th century friendly price of drinks incl. Original Agharta mix drinks the Word famous Pilsner Urquell draught beer the CD shop with complete collection of Czech jazz artists as well as a large international selection Agharta T-shirt designed by Jiří Votruba a first rate local jazz band show. Entrance fee 250,- CZK.



BACK DOORS

**Na bělidle 30, Prague 5-Smíchov,
tel: 257 315 824, www.backdoors.cz**

In spite of the fact that this music cocktail bar is situated in basement area, it's interior is nice and airy. It's a restaurant by day, but it changes into a dance club at the evening hours. Parties are regularly held there, in which you can especially listen to the house music's rhythms. Of course, these parties can be supported by live performances. Perfect place for the spending of pleasant evening with good food for the start. For more informations about programme check their website.

NEW EXPERIENCE

EROTIC MASSAGE



EROTIC AND TANTRIC MASSAGE



www.EROTICMASSAGE.cz

+420 603 991 092

PLZEŇSKÁ 158, PRAHA 5

BARS



MAZANEJ KRÁLÍČEK

Hybernská 32, Prague 1, 224 247 022,
www.mazanejkralicek.cz

When you say a cult movie, many people will imagine the hit from producer Quentin Tarantino - Pulp Fiction, which is famous because of the sayings and stylish atmosphere. You can find both things in Mazanej Králíček. The name of club, which is situated in Hybernská street, not-accidentally refers to the same-named famous scene, in which John Travolta and Uma Thurman did the legendary dance act. Unique style of the movie club was preserved in the present, so thanks to it you can be sure, that you won't find anything similar in Prague.



BAR & BOOKS

Mánesova 64, Prague 2,
tel. 222 724 581, www.barandbooks.cz

Bar and Books in Mánesova street, a sister establishment to the well-known Týnská street's Bar and Books, brings the atmosphere of Manhattan, NYC to Vinohrady, Prague. The New York-style cigar bar features premium and ultra premium spirits, over 70 single malt whiskies and 40 rums as well as Bar and Books' signature cocktails. Wine aficionados will surely enjoy the especially large selection of wine that greatly complements the cheeses and meat appetizers on offer. Food is served until 3 AM. During summer, you can enjoy the exquisite outdoor terrace.



RADOST FX

Bělehradská 120, Prague 2-Vinohrady,
tel: 224 254 776, www.radostfx.cz

Multifunctional area of the concern involves a brilliant vegetarian restaurant, café bar and in the not least line a night music club situated in the lower part. The imaginative lights, laser show, go-go dancers, that's just a small specification of all positives. The popularity of Radost FX is noticable from long-standing functioning on the sphere of this kind of entertainment. The real boast are the Saturdays' actions called Soultrain Weekender, far-famed for the best r'n'b night of the Czech Republic.



LA CAVE BAR

Lázeňská 6, Prague 1 (enter through the passage), www.lacavebar.cz

La Cave is an alternative wine bar with regular live concerts. The interior is marvelous, featuring historical vaults from the Romanesque period, attracting primarily English and German speaking visitors. La Cave is a bar with a friendly atmosphere, and ensures that you will always be welcomed. It is also one of the few places in Prague where you can try one of the most enticing Czech beers- RADEGAST 12°. All of this and more for reasonable prices, right in the city centre. Bar is located in the most picturesque part of town.



Barman show...

Special drinks...

Bar staff you will not forget...

Atmosphere, you will remember...

Music will rock you...

Jack Daniels... our benevolent sponsor...

Harley's Cocktails & Music Bar, Olbracht 16, Praha 1

www.harleys.cz

info@harleys.cz, reservation: +420 602 419 00



AMBASSADOR CASINO

VÁCLAVSKÉ NÁM. 5, PRAGUE 1,
tel. 224 19 36 81,
www.vipclub.cz, Open 24 hours.

Since 1992, Casino Ambassador has been one of the best casinos in Prague. In 2002 the casino underwent reconstruction to improve and expand their services. Aside from slot machines, in Casino Ambassador you can have the chance to play "live" games at manned gaming tables such as: American roulette, Black Jack, Pontoon, and Oasis Poker. You can play with Czech Crowns or Euros right at the gaming tables, and exchange other foreign currencies at the casino's box office for casino chips. Additionally, one of the perks of VIP Club casinos is that entry is free of charge.



CARD CASINO

Veletržní 20, Prague 7,
tel. 220 571 648,
www.cardcasinoprague.cz.
Open 18.00-05.00.

This casino is part of the four-star hotel Parkhotel. The original Parkhotel casino was completely reconstructed, and now offers visitors the utmost in comfort and luxury. Slot machines, gaming tables for American Roulette, and card games such as Black Jack, Pontoon, Texas Hold'em. Poker and Caribbean stud poker are all available for guests. With a minimum stake of only 25 crowns, guests can take the pressure off of playing to win, and enjoy the fun and excitement the casino has to offer.



CASINO HENRY

Václavské nám. 45, Prague 1,
tel. 224 225 194, www.casinoaleks.cz.
Open 24 hours a day.

In 2006, Casino Henry underwent major reconstruction, and today is one of the top ranking casinos in Prague. It is also a part of the five-star hotel Jalta. The local restaurant and bar offers a selection of Russian and Armenian dishes, as well as other international specialties. Here you can enjoy the pleasant atmosphere and top-notch service. Games available at the casino include: American Roulette, Black Jack, American Black Jack, Poker, Pontoon, Caribbean Poker, Punto Banco, and Texas Hold'em.



CASINO PRESIDENT

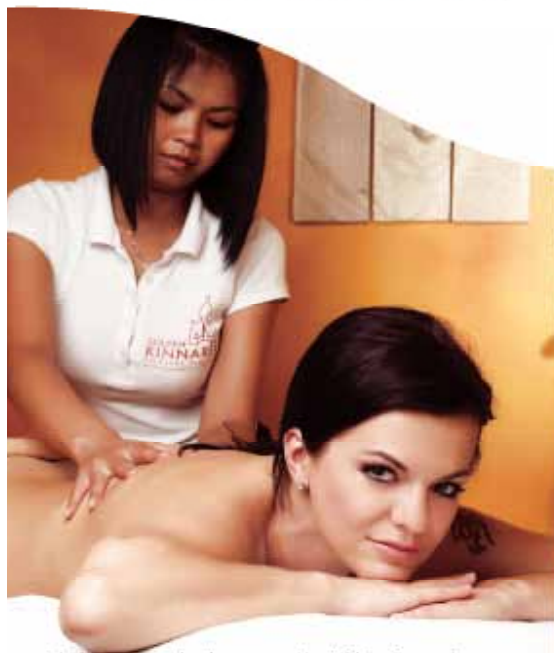
Nám. Curieových 100 (President Hotel),
Prague 1, tel. 234 61 41 13,
www.casinopresident.cz.
Open 18.00-04.00, Fri, Sat 18.00-05.00.

A casino with a longstanding tradition, located along the Vltava River, right in the middle of historical Prague. Casino President is a part of the five-star hotel President, which is located near Pařížská street along the Vltava River. The casino has been opened since 1992 and has always been among the most prestigious casinos in Prague. In a luxury environment you can choose from a broad scale of slot machines but above all from numerous tables offering live games: American Roulette, Black Jack, Pontoon, Caribbean Poker or Texas Hold'em.

"Thai massages, visited / used by celebrities"

(On the photos - singer Marta Jandová,

model and Miss Kateřina Průšová and more...)



Thai massage also known as Nuat Phen Boran is an ancient art which was originally handed from teacher to student in the Buddhist temple schools. Thai massage was spread throughout entire Thailand and became a

respected method of maintaining good health. These days are Thai massages very popular in Europe as well.

We offer:

- Traditional Thai massage
 - Thai foot massage
 - Back and neck massage
 - Anti-stress massage of the head and face
 - Thai oil aroma massage
 - Royal Thai herbal massage
 - Hot lava stones
 - NEW: fourhanded aroma massage from two masseurs
- wholesale / retail:
- Sale of original goods from Thailand

www.goldenkinnaree.cz

rezervace:

Golden Kinnaree,
Revoluční 4
Praha 1 - Nové Město
tel.: +420 734 477 211

hotel City-Central,
Sokolská 21, Praha 2
tel.: +420 242 430 003

hotel Globus -
Golden Kinnaree
Gregorova 10, Praha 4
tel.: +420 732 526 877



SINFUL NIGHT LIFE OF PRAGUE CITY

Why will be deluding ourselves. Every good capital, whose streets pulsate with life, must have beside restaurants, bars, cafes and shopping centers also (as the novelists say) the houses of love. And even Prague is no exception. But before we go into its streets, let's make a small historic revision.

It is no longer the rule that these places are for desperate individuals. Time progressed. You can forget the red neon lights, a company of doubtful quality and cheating customers. Although the movies are convincing us that the so-called night clubs are cheap sources of vice, many psychologists have the opposite view: the company struggles with excessive shame and these clubs can be the right medicine.

When was the phenomenon of night clubs or

prostitution itself actually born? Well, not for anything they say that it's the oldest profession of the world. It is probable that prostitution has evolved from religious belief and rituals which were held to celebrate the goddess of fertility in the Middle-Age. In the 19th century it was strongly developed and reached all segments of society from politics to high art (for example Vincent Van Gogh lived for years with a Flemish prostitute). Even fifty years ago, half of the prostitutes were involuntary. This should already be over. The paradox is that there were previously only 10% of prostitutes educated; now the 50% of them are college students. This is an education reform! We know that it's not easy to find the right company in which you can feel natural and comfortable. Indeed, there are lots of them and if you had to visit them all, it would cost you the whole wealth. For this reason, we are showing few short "best of" tips in the following pages. We guarantee that you definitely won't be bored. The ride full of excitement and beautiful women is awaiting!

Cabaret Moonlight

**WE INVITE YOU TO NEWLY
OPENED NIGHT CABARET
WE WELCOME YOU
DAILY FROM 18.00 TO 05.00 HRS**

**CABARET OFFERS A MASSAGE
OR EROTIC SHOW TOO**

FREE ENTRY

**COME AND RELAX
AT THE SAME TIME**

WELL-STOCK BAR

HOT ATMOSPHERE

**EVERY WEEKEND WE ORGANIZE
FOR YOUR PLEASURE EROTIC SHOW**

BEAUTIFUL AND SMART GIRLS GIRLS GIRLS

**PHONE: 00 420 736 78 78 78
KAMENICKÁ 23, PRAGUE 7
WWW.MOONLIGHTCABARET.CZ**

RELAX



LIVIA ESCORT

Tel. 728 675 947, 720 490 010,
www.liviaescort.cz

Gentlemen, in case visiting men's night clubs isn't your cup of tea (but you'd still like to have some fun), try Livia Escort- a 24 hour service, where the ladies come to you- either straight to your home or to a one-hour hotel. Livia Escort offers much more than regular escort services. If you have a long business trip ahead of you, why not enjoy the company of one of Livia Escort's ladies? You'll see that even work can be fun. This escort guarantee absolute discretion. Each girl offers a given range of services.



HODINOVÝ HOTEL PRAHA (THE HOUR HOTEL)

Na Záměšli 502/3, Praha 5,
tel.: 733 123 650

Are you looking for lovers' asylum? Hour hotel Prague is located in the heart of our metropolis. You will be pleased with premium equipment of rooms, which you can use for an hour's or longer stays. Luxurious and stylish facilities evoke a pleasant and discreet atmosphere. The goal of lovers' asylum is to provide the best services to people, who are looking for appropriate and discreet place for intimate meetings. The room can be booked from 320 Kč per hour and for every next hour are there bigger discounts. The option of registration allows you more additional discounts.



SAUNA BONBON

Černomofská 6, Prague 10-Vršovice,
tel. 777 14 60 68, www.saunabonbon.cz

Finnish sauna, steam room, whirlpool, relaxation cabins, bar with refreshments, internet, free WIFI, and friendly staff- These are all things you can find in the private men's club Sauna Bonbon. However, private does not mean that they are closed to the public. Instead, admission is strictly for men 18 years of age and over. The club's equipment and water systems (especially the filtration and disinfection system for the whirlpool and air conditioning) fully meet safety and hygiene regulations. Get welcome drink for free with this copy of issue!



SHOW PARK "STRIP BAR"

Holešovická tržnice - hala 18,
Bubenské nádraží 306/13,
Prague 7 - Holešovice,
Tel: +420 733 315 025,
www.showpark.info

If you want little night adventure, come to the Strip bar of nightclub Showpark. Sexy dancers and professional strippers will take care of your entertainment until late morning. A perfect musical atmosphere is provided by professional DJs and thanks to large spaces and cozy interior in the whole enterprise you will feel very well. Admission is free. By visiting this Strip bar you can also take a Showpark tour, where beautiful girls in 58 rooms are expecting you.



58 privátních pokojů

Kavárna

Herna

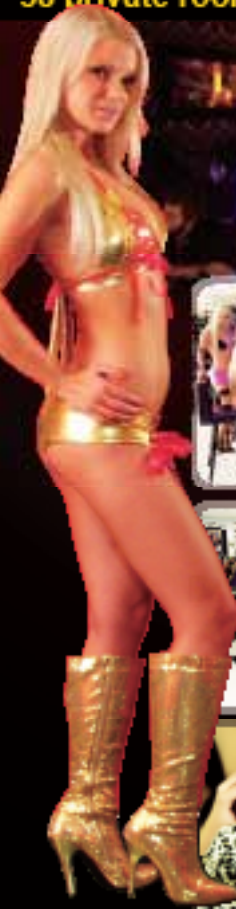
Strip bar

58 private rooms

Café

Casino

Strip bar



SHOWPARK

Holešovičská lázeň - hala 18
Bubenská nádraží 305/13
Praha 7 - Holešovice

+420 733 315 825
info@showpark.info

Provozovní doba / Opening hours

SHOWROOMY / SHOWROOMS

Po - Ne: 12:00 - 6:00 hod
Mo - So: 12 pm - 6 am

KAVÁRNA A HERNÁ / CAFÉ & CASINO

Po - Ne: 12:00 - 6:00 hod
Mo - So: 12 pm - 6 am

STRIP BAR

Út - Ne: 20:00 - 6:00 hod
Tu - So: 8 pm - 6 am

showpark
odměna vlt. manželství 2017

SERVICE

ALIMEX ČR

It offers car delivery to anywhere in Prague within 30 minutes, and delivery to anywhere in the Czech Republic within 90 minutes, or with rentals exceeding 10 days, for free. Seven hundred cars in various categories are at your disposition. Operating leases are also an option. Rate: 588–4285 CZK/day.

Bubenské nábr. 306, Prague 7, tel.: 233 350 001, www.autopujcovna.cz. Opening Hours: Mon 07:00–18:00, Tue–Fri 08:00–18:00, Sat 08:00–14:00

A-RENT CAR

Discount rates are provided for medium and long-term rentals. Immediate vehicle replacement in the case of a breakdown or accident is guaranteed. The rented vehicle may be returned to any of the rental locations at no extra charge. Rate: 1300–4415 CZK/day.

V Celnici 10, Prague 1, tel.: 224 211 587, www.arentcar.cz. Opening Hours: Mon–Sun 07:00–19:00

JS-CAR

Vehicles, mainly Skoda cars, are available for rent. Unlimited mileage is given on all rentals. 30% is added onto the rental fee for one-day rentals. Special offers for certain cars are provided for customers. Rate: 590–2500 CZK/day.

Psohlavců 1360, Prague 4, tel.: 602 216 415, www.iautopujcovna.cz. Opening Hours: Mon–Sun 08:30–17:00

ONETWOGO

Exclusive cars, no older than a few years, are at your disposition. OneTwoGo offer the possibility to use their service only for airport transfers “airport-hotel-airport”. Discounts are given for longer periods rentals. Car delivery and pick-up is free of charge. Delivery in Prague within 60 minutes is guaranteed. Rate: 950–3500 CZK/day.

Jindřišská 7, Prague 1, tel.: 773 116 716, www.autopujcovnavpraze.cz. Opening Hours: 24-hour telephone line

DVOŘÁK RENT A CAR

Dvořák Rent a Car roster also features a limousine service. The branch is conveniently located directly at Prague’s Ruzyně airport. Car reservations and rentals are provided in 6000 destinations around the world. Rate: 1800–5740 CZK/day.

Revoluční 25, Prague 1, tel.: 224 826 260, www.dvorak-rentacar.cz. Opening Hours: Mon–Fri 08:00–16:30

AVIS

Approximately 5000 vehicles are at your disposal. The selection is conveniently divided according to the category of vehicles. Avis offers to arrange returning the car to other European countries than the Czech Republic. Rate: 35–132 Euro/day.

Klimentská 46, Prague 1, tel.: 221 851 225, www.avis.cz. Opening Hours: Mon–Fri 08:00–16:30

DARLING[®] CABARET

V.I.P.
TABLE
ONLINE
RESERVATION

20% DISCOUNT ON DRINKS

As every lover of good food can appreciate an excellent restaurant and its chef's exceptional skills, you also have a unique opportunity to allow your appetite to choose the best from our menu: the most delicious entertainment in the whole of Prague! That is the reason for inviting you warmly to the world-famous Prague cabaret "Darling", which nowadays follows the erstwhile 1920s and 1930s tradition of cabaret performances in a place where passion permeates through the atmosphere.



**FREE TRANSFER
TO DARLING CABARET
WITH EXCLUSIVE LIMOUSINE
+420 732 250 555**

JOIN US: www.facebook.com/DarlingCabaret

www.twitter.com/DarlingCabaret

✧ PRAHA 1, CENTRUM, VE SMEČKÁCH 32 ✧

SERVICE

CZECHTOURISM

The Tourist Information Center is located right in the center. It offers promotional and informational material from all over the Czech Republic. Information on various cultural events is also available.

Staroměstské náměstí 5, Prague 1, tel.: 224 861 587, www.czechtourism.cz. Opening Hours: Mon–Fri 09:00–18:00, Sat 10:00–17:00, Sun 10:00–15:00

TRAVEL GUIDE

The Information Center is located in the lobby of the main train station in Prague. Travel Guide will help you locate the closest hotels in the area, as well as recommend any noteworthy events and attractions.

Wilsonova 8, Prague 2, tel.: 12 444, www.travelguide.cz. Opening Hours: Mon–Fri 09:00–19:00, Sat–Sun 09:00–16:00

PRAŽSKÁ INFORMAČNÍ SLUŽBA

The Prague Information Service is a network of information centers in Prague. It offers tourist information and services. The branches located in the centre offer GPS rental. Service is available in English only.

Rytířská 31, Prague 1, www.pis.cz. Opening Hours: Mon–Sat 09:00–19:00. Staroměstské nám. 1, Prague 1, www.pis.cz, Opening Hours: Mon–Sat 09:00–20:00, Sun 10:00–19:00 Mostecká tower, Prague 1, www.pis.cz, Opening Hours: Mon–Sun 10:00–18:00

ticket sales

TICKETPRO

These companies provides tickets for various events in Prague, as well as outside the city. They can be purchased on-line as well. We have listed the main sales points below.

Prague Tourist Center – Rytířská 404/12, Prague 1. Opening Hours: Mon–Fri 09:00–19:00, Sat–Sun 12:00–19:00

Ticketpro Rokoko – Václavské náměstí 38, Prague 1. Opening Hours: Mon–Fri 11:00–19:00

Pražská informační služba – Rytířská 31, Prague 1. Opening Hours: Mon–Sat 09:00–19:00 – Staroměstská radnice, Prague 1. Opening Hours: Mon–Sat 09:00–20:00, Sun 10:00–19:00

Bohemia Ticket – Na Příkopě 856/16, Prague 1. Opening Hours: Mon–Fri 10:00–19:00, Sat 10:00–17:00, Sun 10:00–15:00. www.ticketpro.cz.

TICKETPORTAL

Via Musica – Malostranské náměstí 13, Prague 1. Opening Hours: Mon–Sun 10:30–18:00

Lucerna music Bar – Vodičkova 36, Prague 1. Opening Hours: Mon–Fri 10:00–13:00; 14:00–18:00

Divadlo Hybernica – Náměstí Republiky 4, Prague 1. Opening Hours: Mon–Sat 11:00–19:00

Roxy – Dlouhá 33, Prague 1. Opening Hours: Mon–Fri 10:00–18:00. www.ticketportal.cz.



CLUB K5 RELAX

- Restaurant
- Cocktailbar
- Sauna
- Steambath
- Massage
- Pedicure
- Manicure
- Solarium
- 15 rooms
- Stripshows
- and
- Girls, Girls
- Escort service

Escort Service

Within 4 floors above the roofs of Prague, everyone will find what he is looking for. This was our aim from the very beginning - an oasis of entertainment and relaxation, directly in the centre of the Golden City. Decide for yourself how we are doing.

Now just a few words about our club: a sauna with a comfortable relaxation room, a steam bath, Roman style, and a variety of other relaxation facilities with massage, manicure or pedicure. Seven air-conditioned rooms on the 5th floor, mirror lined or gloomy, with music and video.

Or the 6 rooms on the 4th floor with different styles, where you could feel yourself in the knight's room as a knight, in the Roman as an emperor, in the oriental as a patriarch, in the cave as aborigine, in the 19th century room as a nobleman or in the cosmic room as an astronaut.

Cool down in our club restaurant or in the show cocktail bar with an icy cocktail or a glass of sparkling wine or champagne. Because the K5 nights are long and hot - as hot as our girls who will convince you that the customer is still the king.

K5 Relax - an incomparable place for your relaxation.

www.k5relax.com

Open daily from 4.00 p.m. to 04.00 a.m.
 All Good Times, Credit cards welcome



5th floor

4th floor



Korunní 5, 120 00 Praha 2, Nám. Míru
 Tel.: +420-224 250 505, 224 250 606, Fax: +420-224 251 616
www.k5relax.com, e-mail: info@k5relax.com

The special one in Prague



taxis

SEDOP

They also provide the option of renting a minibus for groups of maximum of 8 people. The rate below applies for traditional cars. Rate: 23 CZK/km in Prague.

Švehlova 25, Prague 10,
tel.: 841 666 333, www.sedop.cz

TAXI PRAHA

Taxi Praha offer the possibility of calling a taxi on-line. The fare can be calculated on the website. Trips are monitored by GPS for the customer's safety. Rate: without dispatcher 28 CZK/km in Prague, via dispatcher 24 CZK/km in Prague.

Vrchlického 9, Prague 5,
tel.: 222 111 000, www.taxi-praha.cz

PROFI TAXI

Profi Taxi let you use private cars, VIP cars, cars for larger groups, as well as minibuses and buses. Rate: without dispatcher 28 CZK/km in Prague, via dispatcher 26 CZK/km in Prague.

Mezi vodami 27, Prague 4,
tel.: 14015, www.profitaxi.cz

SPEED CARS

In spite of being a relatively new company on the market, Speed Cars have sparked great interest among customers. They provide an online fare calculator, as well as car pick-up. Rate: 19 CZK/km in Prague.

Pacholíkova 4, Prague 2, tel.: 224 234 234,
www.speedcars.cz

PRAGUE TAXI SERVICE



ASSOCIATION A.S.

TERMINAL 2

www.sastaxi.cz



Non stop service
We speak English
Free pick up service in Prague
Free quotations
More than 1250 cars available
Credit cards accepted

+420 222 333 222 +420 729 33 11 33

Prague taxi service with more than 20 years of transportation experience in Prague, the Czech Republic, and Europe



REGULAR SHUTTLE BUS • AIRPORT ↔ CITY CENTRE

COMFORTABLE AND DIRECT
TRANSPORT FROM PRAGUE AIRPORT
TO THE CITY CENTRE OR BACK

Airport bus stop – Arrival Terminals
T1 exit F or T2 exit E

Bus stop – CITY CENTRE
V CELNÍCI Street

• NEXT TO METRO LINE B •
• 48 METRES FROM NÁMĚSTÍ REPUBLIKY •

LEAVES EVERY 30 MINUTES
ONE WAY TICKET
ONLY **130** CZK / PERSON



www.cedaz.cz

SERVICE

MĚSTSKÁ POLIKLINIKA
PRAHA

It provides night time emergency service for adults, including dental care.

Spálená 12, Prague 1, tel.: 222 924 295, www.prahamp.cz. Opening Hours: Mon–Fri 19:00–07:00, Sat, Sun non-stop

THOMAYEROVA
NEMOCNICE

This hospital also has a clinic and provides emergency service at night for children and adults.

Vídeňská 800, Prague 4, tel.: 261 082 520, www.ftn.cz. Opening Hours: Mon–Fri 19:00–06:00, Sat, Sun non-stop

MOTOL

It provides night time emergency service for children and adults.

V Úvalu 84, Prague 5, tel.: 224 438 590-1, www.fnmotol.cz. Opening Hours: Mon–Fri 19:00–06:00, Sat, Sun non-stop

NA BULOVICE

It provides emergency service at night for children and adults.

Budínova 2, Prague 8, tel.: 283 842 222-3, www.fnb.cz. Opening Hours: Mon–Fri 19:00–06:00, Sat, Sun non-stop

shopping
centers

PALLADIUM

The shopping center boasts world-renowned brands, as well as an array of eclectic restaurants on the top floor.

Náměstí Republiky 1, Prague 1, tel.: 225 770 110, www.new.palladiumpraha.cz. Opening Hours: Thu–Sat 09:00–22:00, Sun–Wed 09:00–21:00

MYSLBEK

Myslbek is one of the luxury shopping centers located near Wenceslas Square. The entire shopping center is designed to function as a relaxing shopping area.

Na Příkopě 19-21, Ovocný trh 8, Prague 1, tel.: 224 239 550, www.ngmyslbek.cz. Opening Hours: Mon–Sun 08:00–22:00

SLOVANSKÝ DŮM

The most prestigious brands can be found in this luxurious complex in the city center.

Na Příkopě 1, Prague 1, tel.: 221 45 14 00, www.slovanskydum.com. Opening Hours: Mon–Sun 10:00–20:00

Night Club Coctail Bar



Entry
free



35 girls
every day

Balbínova 733/21,
Praha 2

Phone: 00 420 733 121 022
100m from Venceslav square

www.neonclub.cz

café Louvre

e s t . 1 9 0 2



A favourite hang-out of Prague residents, also visited by Karel Čapek, Franz Kafka, Albert Einstein...

CAFÉ RESTAURANT BILLIARD



CAFÉ LOUVRE, Národní třída 22, Praha 1, tel. 224 930 949
cafelouvre@cafelouvre.cz, www.cafelouvre.cz