

# Bedeker PRAGUE

restaurant guide | city guide

1.  
2014  
FREE

***Everything You Always Wanted  
to Know About Prague\****

***(\*But Were Afraid to Ask)***

Tips for Best **Valentine's Day!**

Restaurants Cafés Hotels Culture Nightlife



**Live  
is  
Life**

**OPEN**

**SUNDAY - THURSDAY 12 - 23**

**FRIDAY - 12- 03**

**SATURDAY - 18 - 03**

***Sochi Olympic  
games live!***



***Restaurant***

**tel.: +420 603 27 22 27**

**info@liveislife.cz**

**www.liveislife.cz**

***Sport bar  
live***



**11°**





# Music Club night live



## Cocktail bar

Haštalská 4, Prague 1





# contents

8

## facts & info

arriving, public transportations,  
history & the famous sites

18

## culture & events

The most popular exhibitions,  
concerts and shows

Interview with Chris Hemsworth

30

## service

Buy the ticket, rent a car or call  
nearest health emergency

36

## gastro

Prague's bests restaurants and  
cafés Beer Tips

52

## nightlife

Prague by night

# Galerie hlavního města Prahy City Gallery Prague

Jedinečná příležitost poprvé v historii zhlédnout  
unikátní prostory Colloredo- Mansfeldského paláce

For the first time in history, a unique chance to visit  
the original interiors of Colloredo-Mansfeld Palace

Palác Colloredo-Mansfeld  
Colloredo-Mansfeld Palace  
Karlova 189/2, 110 00 Praha 1

Otevřeno denně kromě pondělí 10-16 h  
Open daily except Mondays 10 a.m.-4 p.m.

ghmp

PRAHA  
PRAHA  
PRAHA  
PRAHA

COLLOREDO  
MANSFELD



[www.ghmp.cz](http://www.ghmp.cz)

# Bedeker **PRAGUE**



6

**bpmedia**

**BP Media, a.s.**  
**Ovenecká 28/364, Praha 7, 170 00**  
**[www.bp-media.cz](http://www.bp-media.cz)**

**EDITORIAL:**  
general editor: Tomáš Chvála  
editor: Milada Hrušková  
translation: Vo Anh Tuan

**DESIGN & LAYOUT:**  
BP-Media, a.s.

**SHOP ENSURES:**  
BP MEDIA A.S.

**ADVERTISEMENT ORDER:**  
Ivana Dufková  
[dufkova@bp-media.cz](mailto:dufkova@bp-media.cz)

Roman Sobota  
[sobota@bp-media.cz](mailto:sobota@bp-media.cz)

**DISTRIBUTION:**  
GRAND PRINC MEDIA, a.s.  
BP - Media a.s.

**COVER PHOTO:**  
[www.czechtourism.cz](http://www.czechtourism.cz)

Free distribution on selected places  
four times per year

Issue 1/2014 published: 27.1.2014

Registration: MK ČR E 19383

# café Louvre

e s t . 1 9 0 2



## Five o'clock tea for two

*Original english ritual*

**CAFÉ LOUVRE**, Národní třída 22, Praha 1  
tel. 224 930 949, 724 054 055  
[cafelouvre@cafelouvre.cz](mailto:cafelouvre@cafelouvre.cz), [www.cafelouvre.cz](http://www.cafelouvre.cz)



# → WELCOME TO PRAGUE!



Welcome to Prague! Whether you've just landed, arrived by train, bus or car, we've got the allimportant low down on how to reach the city center using all the possible means of transportation, whether on a tight budget or otherwise.

## ↓ 1. ARRIVING IN PRAGUE BY PLANE

The airport is located on the northwest edge of Prague, some 20km (12 miles) from the city center. Although Prague boasts other, smaller airports, all international flights operate through Ruzyně. Important related phone numbers include +420 220 113 314 (general info), +420 220 116 072 (baggage claim) and +420 220 114 283 (lost & found).

### ↓ GETTING TO THE CITY CENTRE

If you've just arrived at the airport, getting downtown is generally, depending on the traffic, a matter of some 20 to 30 minutes (if you make use of a taxi or a shuttle service; see below), or 50 minutes if you use the cheaper yet convenient and comfortable public transportation.



Добро пожаловать в Прагу! Если вы только что приземлились, прибыли на поезде, автобусе или автомобиле, у нас есть все важные данные о том, как добраться до центра города, используя все возможные виды транспорта в зависимости от ваших средств.

## ↓ 1. ПРИБИТИЕ В ПРАГУ НА САМОЛЕТЕ

Аэропорт расположен на северозападной окраине Праги, приблизительно в 20 км от центра города. Хотя Прага может похвастаться другими, меньшими аэропортами, все международные рейсы осуществляются через аэропорт Рузине. Необходимыми телефонными номерами являются +420 220 113 314 (общая информация), +420 220 116 072 (багаж) и +420 220 114 283 (стол находок).

### ↓ КАК ДОБРАТЬСЯ ДО ЦЕНТРА ГОРОДА

Если вы только что прибыли в аэропорт, возможность добраться до центра города, как правило зависит от транспорта. Интервалы составляют от 20 до 30 минут (в том случае, если вы пользуетесь такси



## ↓...BY PUBLIC TRANSPORTATION

Bus presents the cheapest way of reaching city center. It links the airport with the terminus of one of Prague's three subway lines. The drawback may be the fact that you need to buy a bus ticket, for which you'll need Czech crowns. Use the ATMs in the arrivals hall to get Czech crowns, rather than changing money at the overpriced exchange offices. You can either buy your ticket from the kiosk or the transport information desk in both arrival halls (open 7AM – 10PM), from the coin vending machines located right at the bus stop platform, or directly from the driver, although this will cost a couple extra crowns. The ticket price is 26 Czech crowns (1EUR / 1.3USD) for

или трансфером, см. ниже), или 50 минут, если вы пользуетесь более дешевым и удобным общественным транспортом.

## ↓... НА ОБЩЕСТВЕННОМ ТРАНСПОРТЕ

Автобус представляет самый дешевый способ как добраться до центра Праги. Он связывает аэропорт с терминалом одной из трех линий пражского метро. Недостатком является то, что вам будут нужны чешские кроны, чтобы купить билет на автобус. Пользуйтесь банкоматами в зале прибытия, чтобы получить чешские кроны, а не менять деньги в обменных пунктах по повышенной цене.

Вы можете купить билет в киоске или в информационном бюро в обоих залах прибытия (работает с 7 утра до 10 вечера), из монетных автоматов, расположенных на автобусной остановке, или прямо у



“Olomouc, hidden gem of Europe and the most beautiful Czech town.” (Lonely Planet)

**MUST-SEE EVENTS IN 2014**

**TAKE ADVANTAGE OF OUR BARGAIN PACKAGES AT SPECIAL PRICES!**

### **BEERFEST OLOMOUC**

**May 28<sup>th</sup> to 31<sup>st</sup>**

13<sup>th</sup> Czech beer festival

[www.stayovernight.eu/may](http://www.stayovernight.eu/may)

### **OLOMOUC BAROQUE FESTIVAL**

**June 27<sup>th</sup> to July 20<sup>th</sup>**

2<sup>nd</sup> year of summer evenings with Baroque opera

[www.stayovernight.eu/baroque](http://www.stayovernight.eu/baroque)





transfer ticket that remains valid for the follow-up subway ride, or for a total of 75 minutes, plus an extra 13 crowns for larger pieces of luggage.

### BUS # 119

This will probably be most people's choice as the 119 provides the quickest connection to the historical center. Depending on the time of day, it runs every 7 to 20 minutes and gets you to the A line of Prague's subway. Hop on, remember to validate your ticket, and don't get off until the final stop (Dejvická). The subway entrance is just next to where you get off. The bus runs from 4:18AM until around 12:10 AM at night.

### BUS # 100

The 100 bus links the airport with the B-line of the Prague subway. Just get off at Zličín, the final stop. The 100 runs every 15 minutes throughout the day and every half hour after 7PM. The ride takes 15 minutes, but expect another 20 minutes

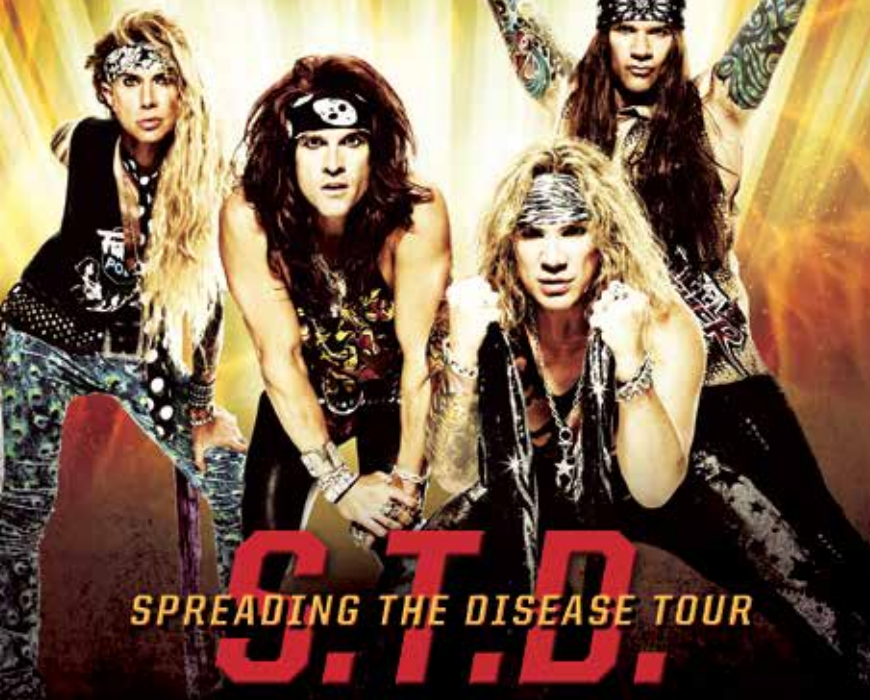
водителя, хотя это будет стоить пару дополнительных крон.

Цена билета с пересадкой составляет 26 чешских крон (1EUR / 1.3USD). Он остается в силе для следующей поездки метро - в общей сложности действителен в течение 75 минут. Для багажа больших размеров вы заплатите следующих 13 крон. Обратите внимание на то, что торговые автоматы и шоферы не принимают иностранную валюту. Автобус удобный, чистый и безопасный способ сообщения с центром Праги для тех, кто хочет экономить. Однако, автобус может быть довольно переполненным в часе пик!

### АВТОБУС № 119

Вероятно, большинство людей выберет автобус № 119, который обеспечивает быструю связь с историческим центром. В зависимости от времени суток, он ездит каждые 7 - 20 минут и соединяет пассажиров с линией пражского метро. Садитесь на автобус и не забудьте закопировать свой билет. Поезжайте до конечной станции метро

# STEEL PANTHER



**S.T.D.**  
SPREADING THE DISEASE TOUR

BALLS OUT - AVAILABLE NOW



**26.2.2014 PRAHA**

LUCERNA MUSIC BAR

#STEEL\_PANTHER STEELPANTHERROCKS.COM /STEELPANTHERKICKSASS

TICKETPRO

Vstupenky v prodeji v sítí TICKETPRO, [www.ticketpro.cz](http://www.ticketpro.cz)

BRITISH INVASION DVD  
AVAILABLE NOW



**FACTS & INFO**

of subway ride if you're aiming to reach the city center afterwards by metro. The bus runs from 5:30AM until around 11:50 PM.

**AIRPORT EXPRESS BUS**

The Airport Express bus service links the airport with the Hlavní nadrazi train station; it runs every half hour and the ride takes 40 minutes. Although part of Prague's public transportation system, special fares apply: tickets can be purchased solely from the driver and run for 50 crowns (with no extra luggage fees). The AE runs from from 5:00AM to 10:00PM.

**TRAVELLING AT NIGHT**

If you want to use the public transportation at night, look out for the # 510 bus, operating between midnight and 3.30AM and linking the airport with the tram at Divoka Sarka. From there, take the tram # 51 to the city center. Note that the night bus runs every 30 minutes.

**↓...BY SHUTTLE**

Various companies run shuttle door-to-door services, or drop you off at the city center. They are generally priced lower compared to taxis, and can be easily found outside the terminals. The CEDAZ minibus shuttles run every half hour and costs 120 crowns per person, dropping you off at the city center. The service operates between 5:30AM and 9:30PM. CEDAZ will also drive you directly to any given address, but you need to pre-book (call +420 220 116 758 or go to [www.cedaz.cz](http://www.cedaz.cz)). Other shuttle services include Prague Airport Transfers who accept credit cards ([www.prague-airport-transfers.com](http://www.prague-airport-transfers.com)).

Дейвица. Вход в метро находится рядом с местом, где вы будете выходить из автобуса. Автобус курсирует с 4ч. 18мин. утра примерно до 00 ч. 10 мин.

**АВТОБУС № 100**

Автобус № 100 соединяет аэропорт с линией Б пражского метро. Выйдите на конечной остановке Зличин. Автобус № 100 ходит каждые 15 минут в течение дня и каждые полчаса после 7 часов вечера. Поездка продолжается 15 минут, но вас ждет еще 20 минут езды на метро, если вы на нем собираетесь добираться до центра города. Автобус курсирует с 5ч. 30мин. утра примерно до 23ч.50мин. ночи.

**АВТОБУС AIRPORT EXPRESS**

Автобус Airport Express (AE) связывает аэропорт с Главным вокзалом (Hlavní nadrazi). Он ездит каждые полчаса, и поездка длится 40 минут. Хотя AE является частью системы общественного транспорта Праги, здесь применяются специальные тарифы: билеты можно приобрести только у водителя и в цене 50 крон (без дополнительной оплаты за багаж). AE ездит с 5ч. утра до 10ч. вечера.

**НОЧНЫЕ РЕЙСЫ**

Если вы хотите использовать общественный транспорт в ночное время, обратите внимание на автобус № 510, который ездит между полночью и 3ч. 30мин. утра и связывает аэропорт с трамваем на остановке Дивока Шарка (Divoka Sarka). Оттуда добирайтесь на трамвае № 51 до центра города. Обратите внимание - ночной автобус ходит каждые 30 минут.

**↓..НА МАРШРУТНОМ ТАКСИ**

Различные компании используют челночное сообщение „от двери до двери ... или высаживают вас в центре города. Их цены, как правило, ниже, чем в такси, и такой тип такси можно легко найти за пределами терминалов. Челночные микроавтобусы CEDAZ ходят каждые полчаса, и проезд в центр города стоит 120 крон на человека. Микроавтобус курсирует с 5ч.30мин. утра до 9ч.30мин. вечера. CE-

## ↓...BY TAXI

Prague taxi drivers are notorious for overcharging tourists. Generally, you should be on the safe side with the fleet of AAA-labelled taxis waiting in front of the terminal. The ride will cost around 500 – 700 crowns. Don't shy away from contacting a competing company, but make sure to always check the price beforehand, whatever company you've chosen! You shouldn't ever have to pay over 900 crowns.

DAZ вас также отвезет по любому заранее заказанному адресу (+420 211 111 111 или посетите [www.cedaz.cz](http://www.cedaz.cz)). Другие услуги включают трансфер из Аэропорта Прага, где принимают кредитные карты ([www.prague-aeroport-transfers.com](http://www.prague-aeroport-transfers.com)).

## ↓... НА ТАКСИ

Пражские таксисты известны своим обчитыванием туристов. Поэтому на всякий случай пользуйтесь такси с надписью AAA, ожидающих перед терминалом. Поездка будет стоить около 500 - 700 крон. Не бойтесь воспользоваться услугами конкурирующих компаний, но заранее убедитесь в цене. Независимо от компании, которую вы выбрали, вы никогда не должны платить более 900 крон.



## ↓2. ARRIVING IN PRAGUE BY TRAIN

International trains arrive at the central station, Hlavní nádraží, often referred to as Praha hl.n. The station is directly connected with Prague's subway system and located right in the city centre. If arriving after dark, we highly recommend hopping on the subway (remember to buy a ticket) rather than walking out and through the surrounding park. Most of the station itself has just been refurbished and boasts a modern look with plenty of kiosks, drug stores and fast-food joints.

## ↓2. ПРИЕЗД В ПРАГУ НА ПОЕЗДЕ

Международные поезда прибывают на центральную станцию, Hlavní nádraží, часто называемую Praha hl.n. Станция непосредственно связана с пражским метро и расположена в самом центре города. Если вы прибываете после наступления темноты, мы настоятельно рекомендуем вам ехать на метро (не забудьте купить билет) и не проходить через окружающий парк. Большая часть самой станции только что была отремонтирована и может похвастаться современным видом с множеством киосков, аптек и ресторанов быстрого питания.

### 3. ARRIVING IN PRAGUE BY BUS

Florenc is the central bus station; located in the city centre, it is also directly adjacent to Prague subway's station Florenc (a transfer station between the lines C and B). Like the central train station, Florenc has recently undergone a major facelift and now boasts a pleasant and clean arrivals & departures hall with kiosks and fast-foods (Burger King, anyone?), and most importantly a big screen showing the bus times and the respective platforms.

### 3. Приезд в Прагу на автобусе

Флоренц не только является центральной автобусной станцией, расположенной в центре города, но и в непосредственной близости от пражской станции метро Флоренц (переход между линиями С и В). Как и центральный железнодорожный вокзал, станция Флоренц недавно подверглась значительной реконструкции и теперь может похвастаться приятным и чистым залом приездов и отъездов с киосками и ресторанами фаст-фуд (желаете Burger King?), а самое главное - большим экраном с отъездами и приездами автобусов и с указанием соответствующих платформ.



### 4. ARRIVING IN PRAGUE BY CAR

Prague falls victim to traffic jams and a lack of legal parking spaces (streets with blue-marked areas on the side are reserved for residents and you run the risk of having your car towed if you park there). This is why we recommend using the so-called P+R's (park and ride) parking places, situated near all highways. Find more info at [www.dpp.cz/en/parking](http://www.dpp.cz/en/parking).

### 4. Приезд в Прагу на автомобиле

Прага становится жертвой пробок и недостатком законных парковочных мест. Улицы с полосой синего цвета на стороне означают области зарезервированные для жителей. В этом случае вы рискуете, что ваш автомобиль будет отбуксирован при паркинге. Именно поэтому мы рекомендуем использовать так называемые стоянки парк анд райд (P + R) - парковочные места, расположенные вблизи всех магистралей. Более подробную информацию найдете на [www.dpp.cz/en/parking](http://www.dpp.cz/en/parking).

## PRAGUE'S PUBLIC TRANSPORTATION SYSTEM

Prague's public transportation system is generally reasonably clean, very efficient, runs on time, and its network spans the whole city; with the price of 32 CZK for a transfer ticket (1EUR / 1.3USD), it cannot be beat. If you don't need to venture out of the center, you can confine to using the subway (or metro, as it's called here) and trams; buses service the further-away neighbourhoods. Let's look more closely at the various tickets you can purchase.

Tickets can be bought from the numerous vending machines in all the metro stations and at many tram stops (always keep coins at hand), or from most tobacco stores / kiosks.

**24-hour pass:** 110 CZK  
**3-day pass:** (72 hours): 310 CZK

### ONE-OFF TICKETS

30 min. / 5 stops / no transfer ticket: 24 CZK, 90 min. transfer ticket: 32 CZK

Remember to validate your ticket upon first entering the metro / boarding a tram or bus. (i.e. slip the ticket into one of the yellow boxes and wait for the info to be stamped on it).

For more information about Prague Public transport visit [www.dpp.cz](http://www.dpp.cz) or call the free info line 296 191 817.

## СИСТЕМА ОБЩЕСТВЕННОГО ТРАНСПОРТА В ПРАГЕ

Общественный транспорт в Праге, как правило, достаточно чистый, очень эффективный и точный. Его сеть охватывает весь город. Цена билета 32 крон за поездку с пересадкой (1EUR / 1.3USD) очень выгодна. Если вам не надо выходить из центра, вы можете ограничиться метро и трамваями. Автобусы следуют в окрестности города. Давайте более внимательно рассмотрим различные

типы билетов, которые можно приобрести. Билеты можно приобрести в многочисленных торговых автоматах на всех станциях метро и на многих трамвайных остановках (всегда имейте при себе монеты), или в большинстве табачных магазинов или киосков.

**Суточный билет (24 часа):** 110 крон  
**Трёхдневный билет(72 часа):** 310 крон

### РАЗОВЫЕ БИЛЕТЫ

30 минут / 5 остановок / без пересадки: 24 крон  
90 минут /с пересадкой: 32 крон

Не забудьте закомпостировать свой билет при первом входе в метро, в трамвай или в автобус. (т.е. вложите билет в одну из желтых коробок и подождите пока билет не будет закомпостирован). Для получения дополнительной информации о пражском общественном транспорте посетите [www.dpp.cz](http://www.dpp.cz) или информорируйтесь по телефону на бесплатной линии 296 191 817.



**ANTIQUE U UHELNEHO TRHU**  
CZECHOSLOVAKIA GSSR PROOF COMMEMORATIVE AND ANNUAL COINS

Skořepka 8, 110 00 Prague 1, Czech Republic  
tel: +420 224 234 696  
opening hours: Mo - Sa 10:00 - 18:00  
[www.numismatik-mince.cz](http://www.numismatik-mince.cz)

## FACTS &amp; INFO

For over 1000 years, Prague has served as the political, cultural and economic centre of the Czech state. Having been the seat of two Holy Roman Emperors during the gothic and renaissance periods, it also had the status of the Holy Roman Empire capital. Prague's history commenced in the year 870, although evidence shows the area had been inhabited since the Stone Age. The city flourished during the 14th century, under the reign of King Charles IV, who, among other deeds, ordered the building of the famous Charles Bridge or Saint Vitus Cathedral, the oldest gothic cathedral in central Europe, and Charles University, the oldest university in central Europe. Prague was then the third-largest city in Europe. Now home to some 1.2 million inhabitants, Prague became the capital of the newly set up Czechoslovakia in 1918, with the end of WW I and the dissolution of the Austro-Hungarian Empire. In 1992, Prague's historic center became a UNESCO world heritage site, and is currently one of the world's most popular tourist destinations.

На протяжении более 1000 лет, Прага служит политическим, культурным и экономическим центром чешского государства. Она была пристольным городом двух императоров Священной Римской империи в готическом периоде и в эпохе Возрождения. Прага также имела статус столицы Священной Римской империи. История Праги началась в 870г., хотя есть сведения о том, что область была населена с периода каменного века. Город процветал в течение 14-го века, во времена правления короля Карла IV, который, наряду с другими проектами, приказал построить знаменитый Карлов мост, кафедральный готический собор Святого Вита, и Карлов университет - старейшие постройки в Центральной Европе. В то время Прага была третьим по величине городом Европы. Сейчас здесь проживает около 1,2 млн. человек. После окончания Первой мировой войны и распада Австро-Венгерской империи в 1918 году Прага стала столицей вновь созданной Чехословакии. В 1992 году исторический центр Праги стал принадлежать к Всемирному наследию ЮНЕСКО, и в настоящее время является одним из самых популярных туристических мест в мире.





## Indoor Go-Kart arena

PKA - Prague karting arena's raceway at Letnany, North Prague, is an excellent venue for individual drivers, private groups and corporate events. With its superb racing facilities and catering services, state-of-the-art race computer systems, multilevel track with 15 meters long bridge and fleet of expertly prepared karts, you can be assured of the thrills of wheel to wheel action that Karting in PKA provides.

PKA is widely recognised as the founder of modern go kart racing for teenagers & adults in Prague and have been at the forefront of indoor go Karting since 1999, developing the sport into one of the most exciting and accessible forms of motor racing today.

Indoor go Karting is not only a thrilling experience, but also great fun, and whether you are a novice or a potential Formula 1 driver, you will find that PKA's fast and furious go Karting race sessions are geared up to give you an adrenalin-filled event to remember!

The track is open all the year from Monday to Friday from 14.00 to midnight and from 10.00 am until midnight on Saturdays and Sundays.

They can be found on crossroads of Toužimská and Ašská street in Prague 9 - Letnany. You can use bus number: 158 from terminal station of Metro (underground) line "C" to station "Stare Letnany" it takes four minutes.

For reservations  
call: +420 777 311 856  
or visit [www.praguekartingarena.com](http://www.praguekartingarena.com)

## PRAGUE KARTING ARENA



# GO-KART

**INDOOR ARENA**

**Thrilling 600 meters long track with breathtaking 15 meters long bridge with special asphalt concrete illuminated with power LED technology.**

**12 fast Subaru 7hp go karts with computerized scoring system.**

**100 seats in bar-restaurant with the whole track view.**

**Easily accessed from the City centre by subway line „C”.**

**Special prices for stag and hen party groups !**

**Call +420 777 311 856 for reservation !**

[www.praguekartingarena.com](http://www.praguekartingarena.com)

E-mail: [info@praguekartingarena.com](mailto:info@praguekartingarena.com)

## IN A SIGN OF AWKWARDNESS

**F**rom time to time a unique event takes place in the cultural world. For a long time it seemed that the most significant event of upcoming weeks will be a concert of film music magician Ennio Morricone. But then he was overpowered by the most famous Hollywood weirdo.

A really big fish will arrive to our Czech small pond at the end of March this year. The director Tim Burton himself will commence the exhibition of artwork which will take place from 28th March to 3rd August at House at the Stone Bell (Dům U Kamenného zvonu) in Prague. And additionally, on the 25th of March Tim Burton will start the concert of movie music of his court composer Danny Elfman who will also attend the concert. With-



out wanting to discredit other cultural tips, one can stand in the front of this unique movie magician who charms us over a quarter century. We wish him to stand in this position for couple of decades.

*Tomáš Chvála*

### AUGUST: OSAGE COUNTY

DRAMA / COMEDY, US, 2013

DIRECTOR: JOHN WELLS

STARS: MERYL STREEP, JULIA ROBERTS, EWAN MCGREGOR

RELEASE DATE: 30.1.2014

It's been a long time since the Weston family reunion. The collective conflict is unavoidable this time. Father, poet and drinker, committed suicide. At his funeral

arrives not only cynical wife Violet (Meryl Streep), who could upset the dead, but also her three daughters (Julia Roberts, Julianne Nicholson, Juliette Lewis), whom she intends to poison their lives. She has enough material: One is having an affair with his cousin, second one's marriage is screwed up, and the third is blinded by the enthusiasm of their wedding and the only thing she can't see is that her man is real bastard.



## JACK RYAN

ACTION / DRAMA, USA, 2013  
DIRECTOR: KENNETH BRANAGH  
STARTS: CHRIS PINE, KEIRA KNIGHT-  
LEY, KEVIN COSTNER  
RELEASE DATE: 30.1.2014

As time wishes restarts, it was also given to Jack Ryan. He had been on the screen with three faces- Alec Baldwin (Hunt for Red October), Harrison Ford (Clear and Present Danger, Patriot Games) and Ben Affleck (Sum of All Fears). And because Chris Pine proved to be a resuscitator of galactic Star Trek,



he was entrusted with the role of famous agent Tom Clancy. In the case of thriller Jack Ryan: Shadow Recruit we will see Jack's first career steps. The director Kenneth Branagh (Thor) also took the main villain role. Jack's mentor is played by Kevin „Superman's dad“ Costner.



There's a bit of Elysium, a pinch of Transformers and Total Recall and nothing from the original RoboCop. Which is probably good. Run against the Paul Verhoeven's brutal classic is like running against the wall. And a different approach,

## ROBOCOP

ACTION / KRIMI / DRAMA, USA, 2014  
DIRECTOR: JOSÉ PADILHA  
STARTS: JOEL KINNAMAN, SAMUEL L.  
JACKSON, GARY OLDMAN  
RELEASE DATE: 6.2.2014

moreover, was considered from the time when the studio announced that it will be a modern gig of robotic police officer accessible to younger people. You won't be bored in any case. Action is outstanding and new Robocop is cool.

## ENNIO MORRICONE

O2 ARENA, PRAGUE 9  
PRICE: 1090 - 4990 Kč, 9.2.2014

There is no greater legend of film music before Ennio Morricone. Morricone has composed music for over 500 films (The Godfather, The Thing, Fistful of Dollars) and worked with the world's best directors such as Sergio Leone, Paolo Pasolini, Brian De Palma, Roman Polanski and Quentin Tarantino. The exclusive concert at the O2 arena will show you sounds of all block-



busters from spaghetti westerns to the latest songs. The concert will be conducted by legendary composer himself. The lovers of film music shouldn't miss Morricone's concert under any circumstances. Chances for another concert of Ennio Morricone in Prague are very low.

## DEPECHE MODE

02 ARENA, PRAGUE 9

PRICE: 1290 - 1790 Kč, 10.2.2014

Concert tour Depeche Mode World Machine Delta Tour was such a success that the pioneers of electronic music decided for the second series of concert dates. Who missed the show six months ago has now a second chance to see this great trio composed of Dave Gahan, Martin Gore and Andy Fletcher. Depeche Mode, who celebrates more than three decades at the top of the music



and have so far sold more than 100 million records, has recently released the thirteenth studio album Delta Machine. And it has become the foundation of their last tour.

## ONE CHANCE

COMEDY / DRAMA, VB, 2013

DIRECTOR: DAVID FRANKEL

STARTS: COLM MEANEY, JULIE WALTERS, SIMON COWELL

RELEASE DATE: 13.2.2014

He definitely did not look like the favorite. Not at all. When the nervous Paul Potts (excellently played by British actor James Corde) with crooked teeth first stood before the jury of the cruel television show „Britain got talent”, viewers expected massacre. Instead of all that, Paul amazed everybody and showed the world that even the smallest man at first glance one can do awesome things. Paul's story became a favorite all over the world and now heading to the cinema.



## DEEP PURPLE

ČEZ ARÉNA (PARDUBICE)

PRICE: 690 - 990 Kč, 14.2.2014



Even the legendary hard rock band extends its European tour with a new album and play again in the Czech Republic. The band will play tracks from their current album Now What?! , from which come singles as Hell to Pay and All the Time in the World. The new tracks of Deep Purple are relatively fresh, were released in April last year, and their production is taken care of by Bob Ezrin . Pause while recording lasted eight long years since the album Rapture of the Deep saw the light of day back in 2005. The concert will also feature naturally good hits of the band.

www.catsgallery.com

CAT'S GALLERY  
Týnská 9, Praha 1



The idea that we should establish a cat gallery arose long before its realization. While visiting various foreign cities and buying cat-souvenirs we sometimes came across a specialized shop for cat-lovers, but we hadn't seen something of that kind in our country. Owing to our affection to cats we have piled up an unbelievable amount of drawings, pictures, cups, variety of pieces and small sculptures and the like to diverse occasions at home and so it was slowly but surely necessary to create an especially detached chamber for them. When we considered about it, we figured out that also the others can enjoy and share our passion for cats! We are just only going to get some more, enlarge our cat-park and open a sell-gallery! On the first of November 2001 after a thorough selection we acquired a space in Týnská street and in fortnight we opened the shop.

Nowadays the biggest reward for us is when we see twinkling faces of our visitors and particularly cat- and animal-lovers how they exult admiring miscellaneous trifles with cat motifs.

## ONEREPUBLIC

INCHEBA ARENA, PRAGUE 7  
PRICE: 990 Kč, 16.2.2014

The beginnings of this popular band date back to 2001, when front man Ryan Tedder won a singing competition in Nashville. With the success he got offer for cooperation with Timbaland and professional career could started. The path to the first album was still very tough, but the result was worth it and the album „Dreaming Out Loud“, shot the band to the top of popularity. In



2009 followed the album „Waking Up“. The band will visit Prague with their third studio album “Native“. Fans should wait for the top chart songs from their repertoire, as well as current hit “If I Lose Myself”.

## THE MONUMENTS MEN

COMEDY / DRAMA, USA, 2014  
DIRECTOR: GEORGE CLOONEY  
STARTS: MATT DAMON, GEORGE CLOONEY, BILL MURRAY  
RELEASE DATE: 27.2.2014



Even if you are not a fan of George Clooney (certainly one such exists), you will not resist to a movie that combines Ocean's Eleven, The Dirty Dozen and university professors' trip. The Monuments Men are taking place during the World War II. And tells the story of an unusual military gang made up of curators and art experts who must provide valuable monuments from all areas of art and in the way they just not worth the Nazis, but also allies.

We all know this story – seventeen years old Angelika is unwillingly married to a wealthy Toulouse Count Joffrey de Peyrac, which has a reputation as a wizard. His charm and intelligence soon wins the heart of Angelique and it seems that their happy life cannot be compromised. But then the count is thrown in prison. In the remake of the classic tale of the beautiful Angélique de Sancy de Monteloup, Michèle Mercier is substituted by Nora Arnezeder in the role of charming Angelique.

## ANGELIQUE

DRAMA, AT / ČR / FR / BE, 2013  
DIRECTOR: ARIEL ZEITOUN  
STARS: NORA ARNEZEDER, GÉRARD LANVIN, FLORENCE COSTE  
RELEASE DATE: 27.2.2014



## NON-STOP

ACTION / THRILLER, USA, 2014  
DIRECTOR: JAUME COLLET-SERRA  
STARS: LIAM NEESON, JULIANNE MOORE, MICHELLE DOCKERY  
RELEASE DATE: 27.2.2014



Liam Neeson in recent years profiled in an ideal action tough guy - his charisma finally matured into a position where it can come into a room where are ten heavily armed guys and you just know that the one who will be defeated won't be Neeson.

In the action thriller Non -Stop he is playing air marshal who is in the air clash with terrorists. They will have an enormous task - 150 million dollars. If the government doesn't give them the money, they kill every 20 minutes per passenger.

## LORD OF THE DANCE

O2 ARENA, PRAGUE 9  
PRICE: 650 - 1950, 1.3.2014

Indulge yourself in a world full of music, dance and emotions. Before your very eyes come alive the story of eternal struggle between good and evil. Immerse yourself in the timeless tale in a beautiful fairytale scene with precise dance performances of dozen dancers in solos and unmistakable dance formations that made Irish dance so famous worldwide. Lord of the Dance by Michael Flatley are most enthusiastically critically acclaimed performances of all time. Since the premiere in Dublin (1996), the show became the most prosperous show in the history of the entertainment industry.



## TIM BURTON

DŮM U KAMENNÉHO ZVONU,  
PRAGUE 1, PRICE: 130 - 190 KČ  
28.3.2014 - 3.8.2014



Burton presents his creative work throughout the world and reaches the famous New York and Paris galleries. In addition to the elite filmmakers he is also ranked among the „major league „ artists. Now his drawings, puppets, designs, illustrations, storyboards, video projections, statues and images will be presented in the House at the Stone Bell. His exhibition in New York's MOMA was seen by over 800,000 visitors. Sale of admission will start up with the opening of the exhibition. We recommend not to hesitate. Interest will be huge.

## CHRIS PINE INTERVIEW



**A** few years ago his name meant nothing to the audience . Then came the breakthrough dream - role of Captain Kirk in the new Star Trek. Chris finally got a chance to show his charisma and seized the chance to excellent. Now cinema revives another legend - agent Jack Ryan. How was the role he played and what can we expect from his conception of the character are the few things among many that you can read about in an interview with Michael Liska .

**How would you describe your Jack Ryan in a nutshell?**

In the world of action heroes Jack is extraordinary. It's someone who you might meet in your everyday life. It's a very smart guy and right now he found himself in a situation where

he does not know what to do. He must respond without training and improvise as never before.

**What do you think Jack is so unique and attractive for the audience?**

One of the things that it did to me so interesting and timeless character is that Jack Ryan is a really decent person. He's got good heart. So this is the kind of man you want to be seen as taking the lead.

The challenge, however, was how to present Jack to the audience in the best way. Jason Bourne has a body. He is very physical and can stylishly kick bad guys' asses. Bond again looks great, has a perfectly fitting suit and great cars. There was a question of showing that Jack's greatest weapon is his brain. He thinks faster than other people. In the film, we try to deliver



the most narrative background for the audience to understand why it is as it is, and how he thinks.

**It's your second major restart after the famous film series Star Trek, where you play Captain Kirk. If you had to compare him with Jack, what's the biggest difference?**

Kirk is impudent and arrogant. And because of these shortcomings he will learn and become selfless. On the other hand, Jack in his mission gets very practical, focused person.

But Jack isn't sure with one thing, as well as all of us. When it comes to solving such urgent task, does he really has guts to do it or not?

**How are Jack relations?**

Jack is a bit of a loner. But he has a strong relationship with Cathy, played by Keira Knightley. I think that Jack sees in Cathy soul mate and throughout the film, it is shown that Cathy has the same courage as he did.

**How are you working with director Kenneth Branagh , who not only had to stand all the time behind the camera , but at the same time , the film took over the role of the main villain ?**

Ken is a director who is on his work thoroughly prepared. When the on-set, has no doubts about what he wants to achieve. I have never worked on a film that would be so fast. And Ken doesn't stop the work either. Everything was under control. And then he ran with ease behind the camera and stood before it.

**In the film Jack's mentor is played by actor Kevin Costner, who now pays for one of Hollywood legend. What were your feelings about that?**

It makes respect when a big movie star and great American director comes to the set. Working with him was like getting a masterful lesson. Harper is becoming an important support for Jack. He constantly reminds him of who he is and why he has chosen for this mission.



# INTERVIEW: Vlastimil Musil

**H**e has devoted already three decades to the processing of the Bohemian garnet. Jewel production has become a nearly lifelong fulfilment of his interests. You will easily notice his love for the craft when engaged in a conversation with him; even after such a long time his eyes are not void of spark when he talks about garnet. And he also has a weakness for tie-pins and cufflinks. All of this is commercial and marketing manager of the Granát Turnov cooperative, Vlastimil Musil.

**Christmas is approaching. Is that of any importance in relation to Bohemian garnet?**

You would be surprised! It is of course a favourite Christmas merchandise, and let's be honest, often even a grateful gift to buy in the nick of time. I am sure we have saved more than one marriage at Christmas, helping husbands out of a tight spot at the last minute (laughing). On a more serious note, Bohemian garnet is a beautiful gift and so we are usually rushed off our feet during Christmas.

**In what lies its uniqueness?**

Bohemian garnet is unique because of its originality and its blood-red colour. As it is being mined and processed in Czech Republic, it has become our national tradition and national wealth.

**How does Bohemian garnet fare in the world?**

Our cooperative has customers all over the world from the United States across Europe to Japan. Jewels with Bohemian garnets are very popular with tourists or foreign customers.

**Why would you recommend the Bohemian garnet?**

A customer who buys an original jewel with Bohemian garnet chooses the right

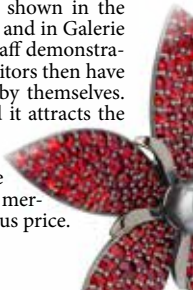
option. He buys something original, he buys a gift or a jewel with direct connection to the visited country and while wearing this jewel he will often remember the pleasant moments spent in Prague, or other Czech city, long after his visit.

**How does one recognize the Bohemian garnet?**

Jewels with Bohemian garnets have distinctive properties and shape. As the stones in question are very small, the jewel is characterised by a large field of small, blood-red stones. Their size varies from about 2.5 to 5 mm. The original jewels come with a genuineness certificate, which has a holographic logo of our cooperative and is made under the trademarks of Bohemian Garnet and Granát Turnov. Each jewel has a hallmark in the shape of the letter G.

**You even run a museum of Bohemian garnet in Trutnov. What all does it offer?**

One can familiarise himself with the history of both mining and processing of the Bohemian garnets. On top of that this year we celebrate 60 years of this tradition. The making of the garnet jewels and demonstrations of the cutting of the Bohemian garnet are shown in the museum, customer centre and in Galerie Granát. Our specialised staff demonstrates these processes and visitors then have the opportunity to try it by themselves. It is really fascinating and it attracts the attention of many visitors. Then there are our shops on the ground level, where tourists can purchase our merchandise at an advantageous price.





Granát, artistic manufacturing cooperative, Turnov The manufacturer of the traditional jewelry from Bohemian garnet. The biggest collection with modern design patterns. The only owner of a Bohemian garnet strip mine.

Shops: Praha 1, Dlouhá 28 a 30 - Praha1, Panská 1 - Praha 1, Pánská pasáž,  
Na Příkopě 23 - Turnov, nám. Českého ráje 4 - Liberec, Pražská 502/3 - České  
Budějovice, Dr. Stejskala 9 - Český Krumlov, Latrán 53

[www.granat.cz](http://www.granat.cz), [www.granat-shop.cz](http://www.granat-shop.cz)



## PYLONES DESIGN SHOP

28.října 376/11, Prague 1  
Phone: +420 224 211 100  
[www.pylones-eshop.cz](http://www.pylones-eshop.cz)

**M7**

PYLONES designs, manufactures and retails a range of beautifully designed household objects which are fun, colorful and affordable. By producing its own-label products in the company's distinctive packaging, PYLONES offers its customers an ideal gift-shopping experience. With a range including kitchen instruments, bathroom accessories, office supplies, baby gifts, jewellery, stationery and personal accessories, every product is designed and produced exclusively for PYLONES.



## GRANÁT TURNOV - ГРАНАТ ТУРНОВ

Dlouhá 28 - P-1, Pánská pasáž - Na  
Příkopě 23 - P-1, Panská 1/892 P-1

В этом году кооператив художественного производства „Гранат Турнов“ отмечает 60 – летнюю традицию производства украшений с чешскими гранатами в г. Турнове и в Чешской Республике. „Гранат Турнов“ в настоящее время является самым большим производителем украшений с чешскими гранатами. Чешские гранаты известны во всем мире. Если вы желаете купить или просто увидеть различные драгоценные камни, посетите три наши магазины в самом центре Праги.



## PALLADIUM

Náměstí Republiky 1079/1a  
Prague – Nové město  
Phone: +420 225 770 250,  
[www.palladiumpraha.cz](http://www.palladiumpraha.cz), [www.facebook.com/palladiumpraha.cz](http://www.facebook.com/palladiumpraha.cz)

**M7**

Palladium is a modern shopping center with a widest range of stores, restaurants and services within the historical part of Prague. In five floors, visitors can find almost 180 stores, 20 restaurants, coffee bars and bars and in the ground floor, almost 900 parking places. A sensitive combination of historical features with a modern architecture creates an unique atmosphere, which makes from shopping a real experience.



## OUTLET USA

Revoluční 30, Prague 1  
Phone: +420 608 253 981  
[www.Outlet-usa.com](http://www.Outlet-usa.com)

**M7**

If you come into Prague not just for delights, but as well for shopping, then visit Outlet USA, especially if you are lovers of designer clothing. Only with many difficulties, you'll find a better shop in Prague with brands as Ralph Lauren, Tommy Hilfger, Ed Gardy, Guess, Abercrombie & Fitch, Nautica, Roxy or Billabong or Calvin Klein and all of this just in one place and for very reasonable prices.

# GALERIE LA FEMME

## EXHIBITION

HOMAGE TO BOHUMIL HRABAL

28. 2. – 22. 3. 2014 at Old Town Hall

More details at [www.glf.cz](http://www.glf.cz)



Galerie La Fame

Bílková 2, Praha 1

(in front of The Intercontinental Hotel)

tel: + 420 224 812 656, +420 775 726 067

[www.glf.cz](http://www.glf.cz), [info@glf.cz](mailto:info@glf.cz)

**SERVICE****Alimex ČR**

It offers car delivery to anywhere in Prague within 30 minutes, and delivery to anywhere in the Czech Republic within 90 minutes, or with rentals exceeding 10 days, for free. Seven hundred cars in various categories are at your disposition. Operating leases are also an option.

**Rate: 300–1500 CZK/day**  
**Aviatická 1048, Prague-Ruzyně**  
**Phone: 220 114 860, [www.alimex.eu](http://www.alimex.eu)**

**A-Rent Car**

Discount rates are provided for medium and long-term rentals. Immediate vehicle replacement in the case of a breakdown or accident is guaranteed. The rented vehicle may be returned to any of the rental locations at no extra charge.

**Rate: 1300–4415 CZK/day**  
**V Celnici 10, Prague 1**  
**Phone: +420 224 211 587**  
**[www.arentcar.cz](http://www.arentcar.cz)**  
**Opening Hours: Mon–Sun 07:00–19:00**

**JS-car**

Vehicles, mainly Skoda cars, are available for rent. Unlimited mileage is given on all rentals. 30% is added onto the rental fee for one-day rentals. Special offers for certain cars are provided for customers.

**Rate: 560–2100 CZK/day**  
**Psohlavců 1360, Prague 4**  
**Phone: + 420 602 216 415**  
**[www.iautopujcovna.cz](http://www.iautopujcovna.cz)**  
**Opening Hours: Mon–Sun 08:30–17:00**

**Car Rental Prague**

Car rental in the centre of Prague great prices a wide selection of cars Škoda and high class cars with automatic transmission VW Passat, Chevrolet... (station wagon, diesel motors). Car accessories children's car seat, ski racks, navigation. Car delivery to Prague airport Vaclav Havel, Hotel or in office near station metro Dejvicka line A.

**Svatovitská 7, Prague 6**  
**Phone: +420 602 722 501**  
**+420 224 314 361**  
**[www.carrental.cz](http://www.carrental.cz)**  
**[www.carrentalprague.com](http://www.carrentalprague.com)**

**Avis**

Approximately 5000 vehicles are at your disposal. The selection is conveniently divided according to the category of vehicles. Avis offers to arrange returning the car to other European countries than the Czech Republic.

**Rate: 35–132 Euro/day**  
**Klimentská 46, Prague 1**  
**Phone: 221 851 225**  
**[www.avis.cz](http://www.avis.cz)**  
**Opening Hours: Mon–Fri 08:00–16:30**

## Pražská informační služba

The Prague Information Service is a network of information centers in Prague. It offers tourist information and services. The branches located in the centre offer GPS rental. Service is available in English only.

**Rytířská 31, Prague 1, [www.praguewelcomes.cz](http://www.praguewelcomes.cz), Opening Hours: Mon–Sat 09:00–19:00.**

**Staroměstské nám. 1, Prague 1, [www.praguewelcomes.cz](http://www.praguewelcomes.cz), Opening Hours: Mon–Sat 09:00–20:00, Sun 10:00–19:00**

**Mostecká tower, Prague 1, [www.praguewelcomes.cz](http://www.praguewelcomes.cz), Opening Hours: Mon–Sun 10:00–18:00**

# RENT-A-CAR

RUNWELL

- > New cars with A/T, M/T
- > Office and the parking place in the center of Prague
- > All included
- > Season discounts up to 15%
- > Online reservation discounts
- > Free GPS
- > Wi-Fi on the board
- > 24/7 emergency service in English, Russian, Czech languages

**WEEKEND TARIFF**

Czech DINNER for free\*

+ 420 728 500 100

[www.runwellrentacar.com](http://www.runwellrentacar.com)

[facebook.com/runwellrentacar](https://facebook.com/runwellrentacar)

\* Rent a car in Prague for more than 4 days

## ticket sales

### Ticketpro

**Prague Tourist Center – Rytířská 404/12, Prague 1. Opening Hours: Mon–Fri 09:00–19:00, Sat–Sun 12:00–19:00**

**Ticketpro Rokoko – Václavské náměstí 38, Prague 1. Opening Hours: Mon–Fri 11:00–19:00**

**Pražská informační služba – Rytířská 31, Prague 1. Opening Hours: Mon–Sat 09:00–19:00 – Staroměstská radnice, Prague 1. Opening Hours: Mon–Sat 09:00–20:00, Sun 10:00–19:00**

**Bohemia Ticket – Na Příkopě 856/16, Prague 1. Opening Hours: Mon–Fri 10:00–19:00, Sat 10:00–17:00, Sun 10:00–15:00. [www.ticketpro.cz](http://www.ticketpro.cz).**

### Ticketportal

**Via Musica – Malostranské náměstí 13, Prague 1. Opening Hours: Mon–Sun 10:30–18:00**

**Lucerna music Bar – Vodičkova 36, Prague 1. Opening Hours: Mon–Fri 10:00–13:00; 14:00–18:00**

**Divadlo Hybernia – Náměstí Republiky 4, Prague 1. Opening Hours: Mon–Sat 11:00–19:00**

**Roxy – Dlouhá 33, Prague 1. Opening Hours: Mon–Fri 10:00–18:00. [www.ticketportal.cz](http://www.ticketportal.cz).**



## taxis

### Cedaz Praha

Public shuttle bus from airport to the centre of Prague or back. Comfortable and direct transport from V Celnici street. Tickets can be bought directly from the driver.

**Phone: +420 220 116 758**

**www.cedaz.cz**

### Taxi Praha

Taxi Praha offer the possibility of calling a taxi on-line. The fare can be calculated on the website. Trips are monitored by GPS for the customer's safety. Rate: without dispatcher 28 CZK/km in Prague, via dispatcher 24 CZK/km in Prague

**Vrchlického 9, Prague 5**

**Phone: + 420 222 111 000**

**www.taxi-praha.cz**

### AAA Taxi

The customers are offered individual way of transport, which provides privacy, comfort and safety. AAA Taxi belongs to the cheapest ones in whole Prague. Rate: from 16.90 CZK/km in Prague

**Phone: +420 222 333 222**

**www.aataxi.cz**

### Speed Cars

In spite of being a relatively new company on the market, Speed Cars have sparked great interest among customers. They provide an online fare calculator, as well as car pick-up. Rate: 19 CZK/km in Prague.

**Pacholíkova 4, Prague 2**

**Phone: 224 234 234**

**www.speedcars.cz**



# PRAGUE TAXI SERVICE



TERMINAL 2



**Call our cheapest taxi in Prague. Price CZK 14,90 / km**

Prague taxi service with more than 22 years of transportation experience in Prague, the Czech Republic, and Europe

+420 222 333 222 +420 729 33 11 33

Watch how we fetch you. Download an app to a phone that runs on Android and order a taxi for a reasonable price.

**Nonstop service • We speak English**  
**Free pickup service in Prague**  
**Approximate price calculation**  
**More than 1200 cars available**  
**Credit cards welcome**  
[www.aataxi.cz](http://www.aataxi.cz)



**REGULAR SHUTTLE BUS • AIRPORT ↔ CITY CENTRE**

**COMFORTABLE AND DIRECT  
TRANSPORT FROM PRAGUE AIRPORT  
TO THE CITY CENTRE OR BACK**

**Airport bus stop – Arrival Terminals  
T1 exit F or T2 exit E**

**Bus stop – CITY CENTRE  
V CELNICI Street**

**•NEXT TO METRO LINE B•  
• 40 METRES FROM NAMĚSTÍ REPUBLIKY•**

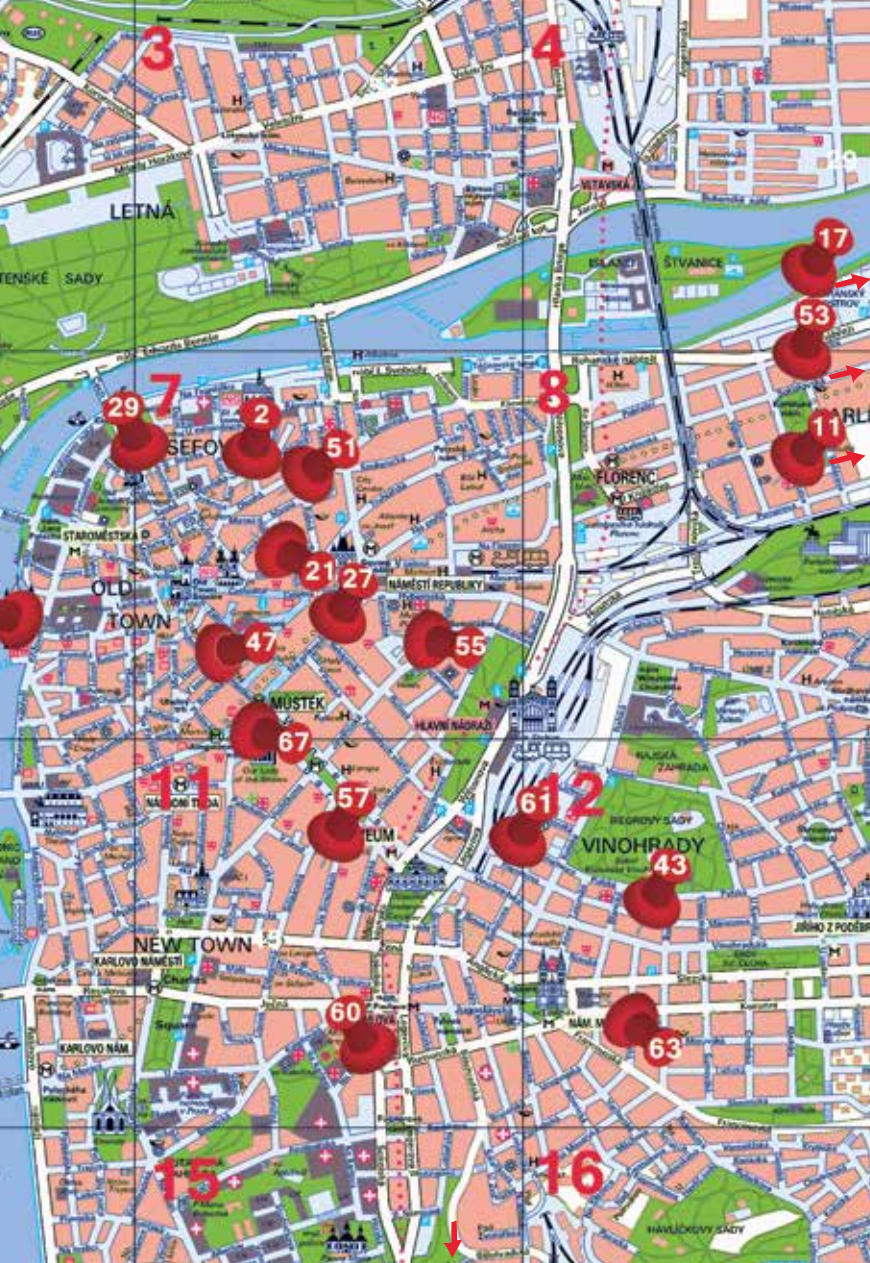
**TICKETS CAN BE BOUGHT  
DIRECTLY FROM THE DRIVER**

[www.cedaz.cz](http://www.cedaz.cz)

- 2 F1 LIFE  
SPORT BAR
- 5 CITY GALLERY  
PRAGUE
- 11 STEEL PANTHER
- 17 GO-KART
- 21 CAT'S GALLERY
- 27 SHOOPS  
GRANÁT
- 29 GALERIE  
LA FAME
- 41 BARANICKA  
RYCHTA
- 43 TECHTLE  
MECHTLE
- 51 HARLEY'S  
MUSIC BAR
- 53 WAREHOUSE
- 57 DARLING
- 59 RELAX  
MASSAGES
- 60 MASAGE XX
- 61 NEON CLUB
- 62-3 WELLNESS  
ROOSEVELTOVA
- 67 BATALION
- 68 METROPOLE  
ZLIČIN



PAGE  
NUMBER



3

4

LETNÁ

7

2

51

8

17

53

11

29

21

27

47

55

OLD TOWN

67

57

61

2

11

18

12

6

VINOHRADY

43

NEW TOWN

60

63

15

16

HAVELKOVY SADY

# OLYMPIC GAMES

**T**he Olympic Games have two faces. First of all, they are prestigious international sports competition in many different disciplines and sports. But on the second hand, they attract troubles. This year's Olympic Games in Sochi will be no exception and we can only hope that it won't be written in our history with red letters.

Fortunately, you can enjoy this sport competition from safe distance in one of your tips. Have fun.

*th.*

**SOCHI**  
2014



## LIVE IS LIFE

Haštalská 4, Prague 1  
Phone: +420 603 272 227  
[www.liveislife.cz](http://www.liveislife.cz)

The recently opened sports bar Live is Life offers you the unique opportunity to visit the first F1 Sport Bar throughout the world. You can expect a real F1 simulator, F1 photos from the best photographer in the Czech Republic Jiří Křenek, live broadcasts F1 and other sports events of the world. Where else to watch the Olympics than in a place that lives with it? The rich beverage menu offers the best from around the world and international menu will allow you to sample the best of European and Czech delicacies.



## RESTAURACE V KORUNNÍ

Korunní 39, Vinohrady, Prague 2  
Phone: +420 252 546 591  
[www.vkorunni.cz](http://www.vkorunni.cz)



The famous restaurant V Korunní which is from the first half of the 20th century an unforgettable part of cultural and social life of Královské Vinohrady specializes in Czech and Old Czech cuisine. If you love these delights, you'll definitely love this restaurant very quickly. You can look forward to a delicious beer (from 17 CZK), delicious rib or pork knuckle (from 199 CZK). For sport matches there are prepared 3 plasma TVs with diagonal of 128 cm thus you will not miss any important moment of the Olympics.



## KOZLOVNA APROPOS

Křížovnická 4, Prague 1  
Phone: +420 222 314 573  
www.kozlovna-apropos.cz

For those of you who like to learn classical landmarks of Prague – The Old Town square and Charles Bridge - Kozlovna ApropoS is a must. A surprise for many visitors (due to location) is the fact that the company does not try to dazzle the dizzying prices but high quality service, pleasant interior, drinks and a wide selection of food (including fresh fish, delicious grilled meats, cold appetizers, soups, pasta, salads and Czech specialties). The Olympic games can be enjoyed on three televisions - the largest in the upper part of the business, other two are at the bottom.

## PLANETA ŽIŽKOV

Tachovské náměstí 79/1, Prague 3  
Phone: +420 222 720 173  
www.planetazizkov.cz

Planet Žižkov, that's one of the traditional restaurants in the heart of Žižkov. Nice, new and modern interior is rivaling with enterprises of higher price category. There are prepared various events during the week such as happy hours of cocktails, so it is good to follow the official website of the company. If you are uncertain about where to go for Winter Olympic Games transmission with your friends and want to be close to the center, Planet Žižkov will not disappoint you. This enterprise isn't one of the largest, but thanks to it, you can see the TV from every angle. It's good idea to make a reservation.



## THE PUB

Vešslavínova 3, Prague 1  
Phone: +420 222 312 296  
www.thepub.cz



Nothing can annoy your Olympic Games transmission more than slow service. Are you sick of wait-

ting? Then you will love The Pub. Here are no pauses at all. The customer can tap a beer himself! This of course doesn't mean that the service didn't work. But when it comes to beer, each table has a beer tap and you alone can determine what pace you drink. And to make the motivation even greater, there are results of drinking from all branches of The Pub from Czech Republic on TVs. You can tap Pilsner Urquell at your table or choose from other beers such as Gambrinus 11 °, black beer Kozel 10 ° and newly Fénix beer.

## LOVE IS ALL AROUND

**O**nce in Rome a man named Valentine was murdered and therefore the 14th of each February is a day to wish much love. But that's enough of black humor. People took a piece of sad history and morphed it into a celebration of love.

Celebration, which annually invade the streets and fully take over even the most cynic people. Resistance is futile and you cannot escape love on the 14th February. And we will give you the best tips where to spend Valentine's Day.

*th.*



### CHARLESTON

Křížkova 55, Prague 8-Karlín  
Phone: +420 222 322 098  
[www.charlestonrestaurant.cz](http://www.charlestonrestaurant.cz)

The atmosphere of the thirties, live piano music and elegance, all waiting for you in the stylish restaurant Charleston in Karlín, where you spend the most unique Valentine's evening. Except the extraordinary interior, the restaurant boasts its perfect cuisine. The dominant delicious steaks. The menu of course offers much more – pastas, salads, desserts, wide selection of alcoholic and non-alcoholic beverages. Everyone will choose what he wants.



### PEKLO

Strahovské nádvoří 132/1, Prague 1  
Phone: +420 220 516 652  
[www.peklo.cz](http://www.peklo.cz)



An unique restaurant Peklo (Hell) located in historical premises of the cave from 12th century remains faithful to tradition and offers the best of the traditional Czech winery with the heart of the old recipes from Czech and French cuisine. The actual environment offers an intimate candlelit atmosphere and live music every evening. If your dear other half is cold the service will provide you a heating blanket. Who appreciate the romance in the gothic style, they will feel in Peklo (Hell) like in heaven.



## RUSTICA

Opletalova ulice č. 36, Prague 1  
Phone: +420 224 234 868  
[www.rustica.cz](http://www.rustica.cz)

Restaurant Rustica offers cozy rooms and rustic style in the heart of our city. It is a place which combines excellent culinary arts with a unique family atmosphere. When you visit the restaurant you can be admire an interesting rustic interior, where prevails magic of refurbished antique furniture and charming details. All this discreetly underlined by the traditional Italian wood-burning oven situated right in the middle of the room. While waiting for your chosen dish you can get carried away on romantic wave induced by flames of warm fire.

## ZORBAS

Ve Smečkách 13, Prague 1  
Phone: +420 608 308 990  
[www.zorbas.cz](http://www.zorbas.cz)



Do you want to experience the Valentine's Day differently? Then consider visiting Zorbas in Prague

## KOBE

Václavské náměstí 1, Prague 1  
Phone: +420 224 267 248  
[www.koberestaurant.cz](http://www.koberestaurant.cz)

Romance with a big piece of steak or sushi? In this case you should choose Kobe restaurant on the Valentine's Day. Kobe is a restaurant located at Václavské náměstí. In Kobe, you can enjoy a steak of Wagyu which is regarded as one of the best meats for steak thanks to the exceptional juiciness and tenderness. Very stylish interior and professional staff will make you feel like in another world. We recommend Kobe to those who want to impress someone or just love good meat. In either case, you won't regret it.



1. Although this restaurant is situated just 200 meters from Wenceslas Square, the prices are very moderate, so that you don't have to be afraid that your meal will cost as much as holiday in Greece. You can enjoy traditional Greek dishes and toast with 60 kinds of Greek and Cypriot wines. These fabulous talks about their authentic Greek cuisine aren't just teasers, the restaurant won numbers of awards which make the restaurant the best Balkan restaurant in Prague. It's a small Greek island in the streets of Prague, whose visit you can really enjoy.



## 7 TACOS STEAK & GRILL

Ortenovo nám. 22, Prague 7 **M4**  
 Phone: +420 220 407 011  
[www.7tacos.cz](http://www.7tacos.cz), [7TacosSteakGrill](https://www.facebook.com/7TacosSteakGrill)

7 Tacos Steak & Grill offers Mexican specialties according to traditional recipes from original ingredients. It offers a wide range of dishes from organically prepared meals to big juicy steaks, as well as tacos, fajitas, burritos, Czech cuisine, mezcal, tequila, and cocktails. Aside from their extensive menu, 7 Tacos also offers a lunch buffer for only 95 CZK, which includes one soup, and one plate of foods and side dishes of your choice. The atmosphere is complete with friendly staff, candlelight, and music.



## U PIVRŇCE PUB **M6**

Maislova 3, Prague 1  
 Phone: +420 222 329 404  
[www.upivrnce.cz](http://www.upivrnce.cz)

If a real Czech tavern is what you're after, you must be sure to check out the traditional pub U Pivrnce. It is one of the best places to get acquainted with Czech beer. One of the pub's most eye-catching elements are the comical hand-drawn pictures on the walls, featuring motifs of the legendary bar fly, Rudy Pivrníc. At U Pivrnce, good beer is usually served with traditional Czech specialties as well as international dishes. Try the Pivrnec guláš, a local dish which is best coupled with Pilsner Urquell, Gambrinus or Kozel.



## RESTAURACE JÁMA

V Jámě 7, Prague 1 **M11**  
 Phone: +420 222 967 081  
[www.jamapub.cz](http://www.jamapub.cz)

Jáma is classical American restaurant which has been running unbelievable 19 years in Prague. The speciality of restaurant are burgers prepared from beef and lots of other ingredients just up to customer (basically is meat rare, but connoisseurs may request a bloodier one). Jáma also offers 12 kinds of draft beer, whether by large, small or mini breweries. Jáma is restaurant with tradition, you find there nice and friendly staff and great atmosphere.



## ISTANBUL KEBAB

Politických vězňů 933/17, Prague-No-  
 vě Město, Phone: +420 777 917 380  
[www.istanbulkebab.cz](http://www.istanbulkebab.cz) **M11**

The first kebab in Prague! Are you longing for Turkish food and time pushes you? Visit Istanbul Kebab where you can choose from a variety of good meals. We recommend trying the Turkish pizza and you will be surprised with its form. Vegetarians will be able to choose meals too. As mentioned at the beginning, Istanbul Kebab belongs to the fast food category so the opportunity to take away your food is natural thing. However when you have time you can find seating there and you can taste the traditional Turkish tea along.





# Baráčnícká rychta

restaurace



A real Czech restaurant with a slightly nostalgic and relaxing atmosphere, delicious Czech cuisine and Czech beer genuine as Svijany and Pilsner beer.



Tržiště 23, Prague 1 – Malá Strana.

Tel.: +420 257 532 461

[www.baracnickarychta.cz](http://www.baracnickarychta.cz)

Open hours:

Mon - Sat: 11am - 23pm

Sunday: 11am - 21pm

10% Discount  
with this magazine



## PETŘÍNSKÉ TERASY

Seminářská zahrada 393, Malá Strana – Prague 1, Phone: +420 257 320 688 / 724 182 757, [www.petrinsketerasy.cz](http://www.petrinsketerasy.cz)  
 Mon-Fri 12:00-23:00 Sat-Sun 11:00-23:00 **M9**

The restaurant is located on one of the most beautiful and romantic places of the middle of the eastern slope of Petřín hill with a completely unique view of Prague. The interior of the restaurant is not short of incredible views. Wooden interior in the style of an old hut with open fire creates a very pleasant home environment. You can look forward to a rich selection of tasty dishes.



## JOHN LENNON PUB

Hroznová 495/6, Prague 1  
 Phone: +420 257 214 266  
[www.johnlennonpub.cz](http://www.johnlennonpub.cz)

Whether you love John Lennon's classic music, delicious beer or a good meal, the newly opened John Lennon Pub is the right place for you. It's a pub where you'll only hear the Beatles, with posters of Lennon on the walls and an original red telephone booth adding to the atmosphere. Out chef's specialty is baked smoked knee on black beer and of course Pillsner Urquell. The „golden drink“ is represented by Gambrinus, black Kozel and non-alcoholic Birrell.



## SKLEPENÍ

Husitská 63, Prague 3  
 Phone: +420 224 224 915  
[www.sklepeni.com](http://www.sklepeni.com)

The guarantee of gastronomic experience, friendly staff and comfortable seating. All this awaits you in an interestingly solved cellar of Žižkov restaurant's basement. This enterprise will satisfy everyone with their offer. Fans of big steaks, sweet-toothed yearning for something lighter or beer lovers who want to „bite“ besides to their favorite beverage, they all will be satisfied here. The restaurant is divided into smoking and non-smoking area and a lounge for private events for 30 people.



## PIZZERIA RIALTO **M8**

Sokolovská 33, Prague 8 Karlín  
 Phone: +420 602 661 444  
[www.rialtopizza.cz](http://www.rialtopizza.cz)

Does the name of this pizzeria sound familiar? It should, because it's named after the famous Venetian bridge Ponte di Rialto. Upon entering you will feel exactly the atmosphere of Italian famous seaside resorts in Italy. You can enjoy the view of the big picture of the mentioned bridge. Enjoy original Italian cuisine with notable flavors inspired from Napoli and northern Italy. In addition, from Monday to Friday at bargain prices, visit the lunch menu.

# TECHTLE MECHTLE

uvádí

**EVERY FRIDAY AND SATURDAY  
STARTING AT 22:00**

# OLDIES PARTY



**VINOHRADSKÁ 47, 120 00 PRAHA 2  
+420 22 22 50 143,  
[WWW.TECHTLE-MECHTLE.CZ](http://WWW.TECHTLE-MECHTLE.CZ)**



## KANTÝNA WINE & RESTAURANT **M7**

Dům U závoje, Havelská 25  
Praha 1, Phone: +420 226 006 122  
www.kantynauzavoje.cz

Situated in „U závoje“ house Kantýna wine & restaurant for lovers of good food has prepared a concept of Czech cuisine combined with a large selection of international specialties. We understand the importance of food quality for all of us as well as trends of modern gastronomy. That's why we believe in simplicity, we try to make our sauces more light and add vegetables to every meal. We emphasize on home-made dishes without any chemical flavorings. We use only the best and always fresh ingredients.



## KOGO **M7**

Havelská 499/27, Praha 1, Phone:  
+420 224 210 259, www.kogo.cz

Magical atmosphere of the Old Town, flexous streets and passages. Here, in the shadow of grand church of st. Havel, is located restaurant Kogo Havelská. The restaurant offers some of the best gastronomic experience, delivering excellent Italian cuisine with Mediterranean flavors. It is based on high quality fresh ingredients imported directly from Italy, seasonal ingredients, homemade pasta, homemade desserts and bread. Summer garden is open from April to October.



## U DĚDKA **M16**

Na Kozačce 12, Prague 2  
Phone: +420 222 522 784  
www.udedka.cz

This restaurant is located on the border of two Prague's quarters called Vinohrady and Vršovice. The restaurant offers 120 seats and rugged interior, which is certainly an advantage. Whether you'll be ordering ribs, with cheese and bacon or anything else, cooks will definitely surprise You with the iringenuity and greats kills. You'll certainly enjoy having dinner or lunch here. There are Pilsner Urquell and Velkopopovický kozel (light and black) for beer lovers here as well.



## KONEC KONCŮ **M12**

Římská 45, Prague 2, Vinohrady  
Phone: +420 222 544 803  
www.koneckoncu.net

A typical Czech family run restaurant with Pilsner beer and nice service on which is based customer's satisfaction. Our new seasonal menu for your sweet tooth prepared by our new team of chefs headed by the chief chef Petr Sládek is going to be ready for you since November 3. We have open a music bar for you on weekends with a capacity of 400 people. Our restaurant and club offers excellent facilities for corporate Christmas parties or other kind of parties. Our team look forward to your visit!



## ÚNĚTICKÝ PIVOVAR

The Únětice brewery was founded in 1710. However, beer has been brewed here by the local canons since the middle of the 16th century and the brewery itself was for centuries owned by the Metropolitan canonry of St. Vitus in Prague. Today in Únětice, we brew the "10°", "12°" and sometimes also the special.

Únětice brewery restaurant

The best way to experience the beneficial effects of the Únětice beer of excellent quality is in our restaurant in the Únětice brewery. We invite you for the Czech meals of chef Lukáš Nechyba and brew master Vladimír Černohorský's Czech tank beer from the lager cellar of the brewery.



### **Restaurant in Uneticky pivovar**

**Phone: +420 220 515 687**

**Rýznerova 19**

**252 62 Únětice**

**[www.unetickypivovar.cz](http://www.unetickypivovar.cz)**

**Restaurant opening hours:  
daily 11.00-22.00**

**(15 minutes by car from Prague city center)**





## DYNAMO

M7

Pštrossova 220/29, Prague 1  
Phone: +420 224 932 020  
[www.dynamorestaurace.cz](http://www.dynamorestaurace.cz)  
Price: Lunch from 95 CZK

If you are in the center of Prague and give on a nice impression, visit the restaurant Dynamo. In 1999 the restaurant was awarded for its interior design, created by Olgoj Chorchoj and Ales Najbrt. Currently it has been changed by the fa Lavmi Babette Ondrová. The restaurant offers specialties of European cuisine and believes, you will enjoy it. You can also be surprised by a large selection of wines from Moravia and all over the world. Enjoy your meal and have a great experience!



## VESELÝ BIZON

M14

Štefánikova 44, P-5  
Phone: +420 257 318 894  
[www.veselybizon.cz](http://www.veselybizon.cz)  
Price: ostrich steak 200gr/ 245CZK

Pleasant and comfortable interior offers this steak restaurant situated in Smíchov. Besides steaks there are a lot of grilled specialties served. New feature is the ostrich steak delivered fresh from the farm Studánka, which you should taste when you visit the restaurant. You will maybe be amused because names of dishes are chosen at least unusually, such as "Donald's seconds" – steak made from duck breasts with cranberries sounds really promising.



## CHAPADLO

M15

Nuselská 44, Prague 4  
Phone: +420 241 404 337  
[www.chapadlo.com](http://www.chapadlo.com)

The restaurant Chapadlo in Nusle features a complex modern concept. Modern gastronomy goes hand in hand with well-sophisticated interior with clean lines and natural elements. Here are special offers of food prepared every month. You can find there even a 400g steaks. You can also use the offer of lunch menu. Drink arsenal is filled with a wide offer of beers from Pilsner brewery and wines from the whole world.



## GEORGE AND DRAGON

M7

Staroměstské náměstí 11  
Phone: +420 222 326 137  
[www.georgeanddragonprague.com](http://www.georgeanddragonprague.com)

George and Dragon was founded in September 2003. Since then this bar became very popular between both foreign and local visitors. Many of them appreciate English-speaking staff, live music and a wide variety of drinks you won't find anywhere else in Prague - for example Heineken, Stella, Guinness, Edelweiss, London gold, Magners, Strongbow, Koppaberg and lots more. The menu contains traditional English breakfast, Steak pie, Shepherd's pie, Fisherhman's pie, chicken or beef burger, Traditional Fish and Chips and other famous English recipes. You can also choose from several salads.

# pizzeria K.MOTRA



LUNCH MENU 115-150 Kč

## Pizzeria Kmotra

If you want a really good pizza prepared from high-quality ingredients or fresh home-made pasta, Pizzeria Kmotra is the right choice for you. This pizzeria is proud of its reputation because it's the oldest pizzeria in Prague and from its earliest days it has emphasized both the quality and freshness of the ingredients used and the reasonable prices. The restaurant has separate areas for smokers and non-smokers and a private room for 35 guests. There are ISIC card-holder discounts and home-delivery is also available (see our website for current offers). As well as beer and spirits, you can choose traditional Italian wines or selected quality Czech wines.

V Jirchářích 12, Praha 1, Phone: 224 934 100, [www.kmotra.cz](http://www.kmotra.cz)



# NAPA bar & gallery

open from 05:00 pm till 03:00 am  
3 minutes from Charles Bridge  
a great choice of beverages  
concerts, billiards

**NAPA bar & gallery**  
**Prokopská 8, Praha 1**  
**+ 420 777 255 066**  
**[www.napabar.cz](http://www.napabar.cz)**

## TEA/CAFE TIPS



### CAFFÈ PER LEI

M7

Karlova 154/17 Prague  
Opening hours: 10-22h

This famous café is located in the heart of old Prague center on the royal route. You can be pleased by stylish and comfortable interior, excellent international cuisine, delicious cakes and excellent Italian coffee brand Tonino Lamborghini. For your convenience you can find also Wi-Fi connection. We confirm the excellent and courteous service.



### DARUMA

Trojanova 4 Prague 2  
Phone: +420 603 193 505  
Opening hours: mo – fr: 11:00 – 22:00,  
sa – su: 14:00 – 22:00  
[www.darumacaj.cz](http://www.darumacaj.cz)

If you are looking for a quiet and comfortable environment with the spirit of Asia and the Orient, you will feel like home in Daruma. There is a wide selection of more than 100 kinds of fresh teas and many other goods from Asia and the Orient. If you like trying something new, Daruma will always be happy to advise and offers some specials. Daruma is an oasis of peace and tranquility in the hustle and bustle of the city. Certainly it won't only refresh your spirit but also the body. And at reasonable prices.



### DOBŘÁ ČAJOVNA

Wenceslas Square 14, Prague 1  
[www.tea.cz](http://www.tea.cz)

M11

Dobrá čajovna located in the lower part of Wenceslas Square, was opened on June 1st, 1993 as the first teahouse in Czech Republic and in the post-revolutionary period immediately attracted attention to itself. During the following years, Czech Republic became a country with the biggest concentration of tea shops in the world. Visit the unique space of this Mother of Tea-rooms, the place where it all started and in a pleasant environment do try some of the finest tea that has directly arrived from all the four corners of the tea world.



### CAFE SLAVIA

M10

Smetanovo nábřeží 1012/2, P-1,  
Phone: +420 224 218 493  
[www.cafeslaviva.cz](http://www.cafeslaviva.cz)  
Open hours: mo – fr: 8:00 – 24:00, sa  
– su: 9:00 – 24:00, Price: ice coffee with  
ice cream and whipped cream 65 CZK

Pearl of the cafes is definitely a café Slavia, directly from the table you can admire the beauty of Charles Bridge, Prague Castle and National Theatre while enjoying an iced coffee or a glass of excellent wine. You can enjoy a professional pianist who performs everyday between 17:00 and 23:00. Finally don't forget to praise excellent service.



## STARS IN K.U.BAR

Rytířská 13, Prague 1  
Phone: +420 724 695 910  
www.kubar.cz



## CAFÉ, COCKTAIL BAR, & LOUNGE PARC FERMÉ

Vodárny 1226/6, Prague 3  
Phone: +420 222 516 097  
www.parcferme.cz

Stylish café, cocktail bar and lounge – Parc Fermé is just few steps away from the dominant of Královské Vinohrady – Vinohradská vodárna. In the original and cozy interior you can enjoy first class coffee – La Genovese which recently won a gold medal at prestigious international competition International Coffee Tasting 2012. In addition to the classic assortment of alcoholic and non-alcoholic beverages (we recommend cucumber lemonade) or mixed drinks, you can also enjoy a range of exclusive drinks. Of course there is a possibility of reservation for private celebrations, parties and presentations.



This popular bar is located in the heart of Old Town and it is not excluded that you will meet there a czech celebrity. You can refresh yourself with tasty cocktails throughout the night and cool atmosphere is provided by local DJs, who are spinning the records up in the rhythm of house music until the early morning hours. K.u. bar is equipped with Cool LifeTables - touch interactive tables where you can communicate by using chat with other tables in the bar, you can order through the electronic menu, check the state of your account - shortly you have an overview.

## DIVERSE MADONA

Pod Děkanou, Prague 4  
Phone: +420 777 066 902  
www.madona.cz



Don't you like stereotypes? Then Music Bar Madona is tailored just for you. Karaoke on Tuesday, a disco full of Czech hits on Wednesday, a video-disco on Thursday, Friday in style of 80's and 90's and Saturday the same plus modern dance music. Madona has something for all of you. In music bar, there is a 12 m long bar for you, thus you don't need to have any worries that you would not get anything. You will find a wide sortiment in our menu of both alcoholic and alcohol-free drinks, including 60 mixed cocktail drinks. The bar is located in a main hall, which absorbs 150 to 200 people, then there is also a smaller bar and naturally a dance floor.

## SHADOW CAFE KARLÍN

Křížikova 134/58, Prague 8  
Phone: +420 725 800 576  
[www.shadowcafe.cz](http://www.shadowcafe.cz)



The newly opened branch of Shadow Café at Karlín found very quickly a lot of local inhabitants and weekend visitors. The unique concept of bar is the 2nd branch in Prague. This one at Karlín takes pride with very pleasant sitting in the garden with barbecue and special burgers. Pilsner Urquell, unpasteurized Gambrinus, Pragomošt sodas with many flavors, table football Rosengart and DJs playing from every Wednesday to Saturday are natural things. For the fans of relaxed lifestyle this is the place to relax and for the reserved ones for inspiration.

## ON A WAVE OF 30'S IN BLACK ANGELS BAR

Staroměstské náměstí 29, Prague 1  
Phone: +420 224 213 807  
[www.blackangelsbar.cz](http://www.blackangelsbar.cz)

Do you want to start step by step in more cultivated space, where you can really enjoy drinks and at the same time, you will get into absolutely unique environment? Then Black Angels Bar, which is built in a style of prohibition businesses of 30's, would not miss your attention. A really various menu of drinks waits for you, cocktails made of fresh fruit, a wide selection of wines, from eight p.m. a live music on piano and many drink specialties (definitely try „ice balls“). The bar quality is also confirmed by a fact that every year it is chosen by experts from foreign countries to the list of those the best bars, which you can find in whole Europe.



## BAR AND BOOKS

Mánesova 64, Prague 2  
Phone: +420 222 724 581  
[www.barandbooks.cz](http://www.barandbooks.cz)



Bar and Books has a rich history. The first enterprise of this „chain“ was created in 1990 in New York City as a bar, which offered high spirits and cigars in addition. The branch in Vinohrady offers a stylish interior art from New York, the main bar with a capacity of 70 persons and a lounge with a fireplace for private events of up to 30 people. There is a second Bar and Books in the street Týnská in Prague, which has been running for 10 years.

Bar and Books имеет богатую историю. Первое заведение этой «сети» было открыто уже в 1990 году в Нью-Йорке. Это был бар, в котором, в дополнение к первоклассным алкогольным напиткам, предлагались ещё и сигары. Филиал в Королевских Виноградах (Královské Vinohrady) предлагает стильный интерьер с работами мастеров из Нью-Йорка, главный бар с вместимостью 70 человек и малый банкетный зал с камином для частных мероприятий до 30 человек. В Праге есть ещё и второй Bar and Books на улице Тынской (Týnská), который работает уже 10 лет.



**Harley's Bar presents:**

**Party You will not Forget**

**Music, that makes You Move**

**Barstaff & Drinks, that will Rock You**

**Atmosphere You will remember**

**And if You Party Well, You Will See Hell of a Bar Show!**



**Dlouhá 18, Praha 1**

**Tel. +420 602 419 111 / [harleys@harleys.cz](mailto:harleys@harleys.cz)**

**JACK**  
LIVES HERE.





## EL MOJITO CAFÉ

Dlouhá 31, Prague 1  
Phone: +420 776 872 989

**M7**

El Mojito Café Prague is so unique. You would hardly find any other type of business where they can serve you more types of Mojito as the name already suggests. If you are situated in the center of Prague, in the streets around Dlouhá Street we recommend you to go to one from the 25 kinds of Mojitos. You can find there also delicious food to eat. You will be fascinated in a very cozy interior with a unique touch of coastal states.



## LOCA CAFE BAR

Smetanovo nábřeží 24  
Phone: +420 212 240 967  
www.locabar.cz

**M6**

Do you long for a pleasant stay with a view of not only the river bank, but also to Prague Castle and Charles Bridge? Delicious food, good drinks and attentive service? Then LOCA CAFE BAR is the right choice! You will enjoy this stylish new restaurant not only because of its location on the Smetana riverside but also for the interior and everything it has to offer. And is not that little!



## BARÁČNICKÁ RYCHTA

Tržiště 23/555, Prague 1  
Phone: +420 257 532 461  
www.baracnickarychta.cz

**M6**

This place has always been the meeting place of people in various cultural events such as concerts of various genres, dance nights, theater of small scenes, cabarets and much more. You would hardly find a saloon like this in Prague. It seems as if time has stopped. Its unique atmosphere and location will conquer you as well as excellent traditional Czech cuisine, delicious beer and friendly staff. If you don't select from the rich program, you can select "Baráčnická rychta" for private or corporate events.



## NAPA BAR & GALLERY

Prokopská 8, Malá Strana, Prague 1  
Phone: +420 777 255 066  
www.napabar.cz

**M6**

Joining a bar with a gallery, not bad of an idea! If you add in occasional gigs and small concerts in the bar, it even becomes an excellent combination. This is exactly what NAPA bar is like. Simply a relaxed bar, where they will take good care of you. You can for example enjoy the unique taste of the rum Zacapa, choose from a wide variety of other intoxicating drinks or play some pool.

# WAREHOUSE #1

Destiláty | Triple "A" vína | Doutníky



Warehouse #1, Sokolovská 105, Praha 8 – Karlín (naproti hotelu Ibis), [www.warehouse1.cz](http://www.warehouse1.cz), tel.: 608 520 526  
otevřeno: pondělí – pátek 11:00 – 19:00

## PLAY WITHOUT PAIN

A human being is a playful creature and casinos are successfully benefitting from that. However, it's necessary to be realistic. The game is simply a game. If the winning should be in the first place, companies would have gone bankrupt long time ago. But happiness isn't excluded.

And it has its own charm to take a precisely fitting suit, sit down to a gaming table with a glass in hand, yield to the atmosphere of the game and gamble a bit. Who wouldn't want to feel like James Bond once in a while? It's better to try it with poker than in the dark alley with a gun in your hand.

th.



## CARD CASINO

M3

Veletržní 20, Prague 7  
Phone: 220 571 648  
[www.cardcasinoprague.cz](http://www.cardcasinoprague.cz)  
Open 18.00-05.00

This casino is part of the four-star hotel Parkhotel. The original Parkhotel casino was completely reconstructed, and now offers visitors the utmost in comfort and luxury. Slot machines, gaming tables for American Roulette, and card games such as Black Jack, Pontoon, Texas Hold'em. Poker and Caribbean stud poker are all available for guests. With a minimum stake of only 25 crowns, guests can take the pressure off of playing to win, and enjoy the fun and excitement the casino has to offer.



## CASINO PRESIDENT

Nám. Curieových 100 (President Hotel), Prague 1, Phone: 234 614 113  
[www.casinopresident.cz](http://www.casinopresident.cz), Open 18.00-04.00 Fri, Sat 18.00-05.00

M11

A casino with a longstanding tradition, located along the Vltava River, right in the middle of historical Prague. President is a part of the five-star hotel President, which is located near Pařížská street along the Vltava River. The casino has been opened since 1992 and has always been among the most prestigious casinos in Prague. In a luxury environment you can choose from a broad scale of slot machines but above all from numerous tables offering live games: American Roulette, Blackjack, Ponton, Caribbean Poker or Texas Hold'em.



## CASINO KARTAČ **M7**

Na příkopě 852/10  
Phone: +420 224 216 888  
[www.casinokartac.cz](http://www.casinokartac.cz)

The Casino is open for you 7 days a week, 24 hours a day. The minimal stakes begin at 10 CZK, so that really everybody can try their luck at the gaming machines, TouchBets, Roulette, Black Jack and different poker variants. Every day from 19 o'clock we also play Texas Hold'em, both as cash game and as tournaments. Our players have free entry and snacks.



## CASINO HENRY

Václavské nám. 45, Prague 1  
Phone: +420 224 225 194  
[www.casinoaleks.cz](http://www.casinoaleks.cz)  
Open 24 hours a day

**M11**

In 2006, Casino Henry underwent major reconstruction, and today is one of the top ranking casinos in Prague. It is also a part of the five-star hotel Jalta. The local restaurant and bar offers a selection of Russian and Armenian dishes, as well as other international specialties. Here you can enjoy the pleasant atmosphere and top-notch service. Games available at the casino include: American Roulette, Black Jack, American Black Jack, Poker, Pontoon, Caribbean Poker, Punto Banco, and Texas Holdem.



## BANCO CASINO **M7**

Na Příkopě 27, Prague 1, 110 00  
Phone: +420 224 267 177  
[www.banco-casino.cz](http://www.banco-casino.cz)

The building that houses Banco Casino is located on the historically significant border between the Old and New Town. The street, which is in accordance with the current rating scale in order as the 18th of the most expensive street in the world in terms of any lease areas within it. Therefore, if you are the real players here will be the right place.



## AMBASSADOR CASINO

Václavské nám. 5, Prague 1  
Phone: +420 224 19 36 81  
[www.vipclub.cz](http://www.vipclub.cz), Open 24 hours

**M7**

Since 1992, Casino Ambassador has been one of the best casinos in Prague. In 2002 the casino underwent reconstruction to improve and expand their services. Aside from slot machines, in Casino Ambassador you can have the chance to play "live" games at manned gaming tables such as: American roulette, Black Jack, Pontoon, and Oasis Poker. You can play with Czech Crowns or Euros right at the gaming tables, and exchange other foreign currencies at the casino's box office for casino chips. Additionally, one of the perks of VIP Club casino is that entry is free of charge.



## SINFUL NIGHT LIFE OF PRAGUE CITY

**W**hy will be deluding ourselves. Every good capital, whose streets pulsate with life, must have beside restaurants, bars, cafes and shopping centers also (as the novelists say) the houses of love. And even Prague is no exception. But before we go into its streets, let's make a small historic revision.

It is no longer the rule that these places are for desperate individuals. Time progressed. You can forget the red neon lights, a company of doubtful quality and cheating customers. Although the movies are convincing us that the so-called night clubs are cheap sources of vice, many psychologists have the opposite view: the company struggles with excessive shame and these clubs can be the right medicine.

When was the phenomenon of night clubs or prostitution itself actually born? Well, not for anything they say

that it's the oldest profession of the world. It is probable that prostitution has evolved from religious belief and rituals which were held to celebrate the goddess of fertility in the Middle-Age. In the 19th century it was strongly developed and reached all segments of society from politics to high art (for example Vincent Van Gogh lived for years with a Flemish prostitute). Even fifty years ago, half of the prostitutes were involuntary. This should already be over. The paradox is that there were previously only 10% of prostitutes educated; now the 50% of them are college students. This is an education reform!

We know that it's not easy to find the right company in which you can feel natural and comfortable. Indeed, there are lots of them and if you had to visit them all, it would cost you the whole wealth. For this reason, we are showing few short "best of" tips in the following pages. We guarantee that you definitely won't be bored. The ride full of excitement and beautiful women is awaiting!



# DARLING<sup>®</sup> CABARET *fashion*

SOMETIMES UP TO

**150**  
DANCING  
GIRLS

IN OUR AMAZING  
COSTUMES



www.kabaret.cz/navi

4  
BARS

4  
STAGES



**FREE TRANSFER** WITH EXCLUSIVE LIMOUSINE  
TO DARLING CABARET **+420 732 250 555**

**CENTRUM, VE SMEČKÁCH 32, PRAHA 1**

## TIPS FOR RELAX



### LIVIA ESCORT

Phone: +420 728 675 947, 720 490 010  
[www.liviaescort.cz](http://www.liviaescort.cz)

Gentlemen, in case visiting men's night clubs isn't your cup of tea (but you'd still like to have some fun), try Livia Escort - a 24 hour service, where the ladies come to you - either straight to your home or to a one-hour hotel. Livia Escort offers much more than regular escort services. If you have a long business trip ahead of you, why not enjoy the company of one of Livia Escort's ladies? You'll see that even work can be fun. This escort guarantee absolute discretion. Each girl offers a given range of services.



### NIGHT CLUB NEON

Balbínova 21, P-2, Phone: +420 222 250 105, [www.neonclub.cz](http://www.neonclub.cz)  
Open from 12:00 to 05:00  
Price: 1 400 CZK per hour

**M11**

Neon Club is located near the center of Prague in the street Balbínova. You will be pleased that there is no admission charge. The company is among other things, very comfortably furnished and you will meet 35 beautiful girls every day. The local prices are funny but true and even the escort service is probably the cheapest in Prague. You can visit the Neon Club just for a drink and have fun with nice girls.



### LATIMERIE

Slezská 74, Prague 3-Vinohrady  
Phone: +420 224 252 049  
[www.latimerieclub.cz](http://www.latimerieclub.cz)

**M12**

The modern and also very comfortable interior offers a chance to retreat from the hustle and bustle of the city center. Nestled away in Prague 3's quaint Vinohrady, Latimerie is a cross between a cafe and cocktail bar, interlaced with low-key dance music. It's the perfect place to chat, or just listen to music and relax. The venue is very open and spacious, interspersed with original paintings, creating a modern yet unique atmosphere. You certainly won't be bored there, especially if you visit the club during one of its extravagant events, including show-stopping transvestite shows.



### SHOW PARK STRIP BAR

Holešovická tržnice - hala 18  
Bubenské nádraží 306/13  
Prague 7 - Holešovice  
Phone: +420 733 315 025  
[www.showpark.info](http://www.showpark.info)

**M4**

If you want a little night adventure, come to the strip bar nightclub Show-park. Sexy dancers, strippers and professional DJ's will take care of your entertainment until late morning. With large spaces and cozy interior in the whole place will feel very well. Surely you and your wallet will be happy because the drinks are at unbeatable prices. Admission is free.



**NON-STOP  
RELAX ANGEL  
MASSAGES:**

**TANTRA  
RELAX  
EROTIC**

**Adress: Nádražní 21, Prague 5  
(2.Floor)**

**Phone: +420 212 246 209**

**Mobile: +420 607 023 032**

**E-mail: relax-angel@seznam.cz**

**[WWW.MASSAGE-PRAGUE.COM](http://WWW.MASSAGE-PRAGUE.COM)**

**Young masseuses.**

**Sauna, jacuzzi.**

**Erotic massage in the jacuzzi!**

**Massage beds are heated!**

**Massage with hot stones!**

**Body to body massage!**

**Prices from 40 EUR**

**Escort at hotel**



*MASSAGE XX*  
*salon of erotic massage*

☎ contact us: **+420 608 900 316**  
*seven days a week!*



FOR MEN



FOR WOMEN



FOR COUPLE



FOR GAY

**M**assage in Prague, erotic massage

Do you find that your love life loses intensity that it became tedious and you are really tired of it? What about testing quality erotic massage? Surely you wake up in a good deal of excitement in you and your sex life picks up speed again. Nothing else will wake such lust, like quality erotic massage. Maximum care of our body wants everybody, so our massages are the best decision that you can do for yourself. Try out our erotic massages in Prague and you will not regret!

[www.massage-erotic-prague.com](http://www.massage-erotic-prague.com)

Massage in center Prague !

Rumunská 4

Praha 2

5 minutes from metro station „MUZEUM“

E-mail: [glamour363@gmail.com](mailto:glamour363@gmail.com)

Mobile: +420 608 900 316



**10% discount**  
with this magazine

# Night Club Coctail Bar



**Entry  
free**



**35 girls  
every day**

Balbínova 733/21,  
Praha 2

Phone: 00 420 733 121 022  
100m from Venceslav square

**[www.neonclub.cz](http://www.neonclub.cz)**

# Wellness Rooseveltova



**T**he time is living because of the health. Our body is a temple, which should be given the best possible care. If you are looking for an oasis of relaxation, beauty and health, where you will be able to relax your body and soul and where you will be taken care of with the utmost care, we have the perfect tip for you.

In beautiful and quiet area of Prague 6 – Bubeneč in the house Residence Rooseveltova (Roosevelt Residence) is located Wellness Rooseveltova, which offers an unique combination of services, discreet environment where every client can be sure of a sufficient degree of privacy. This place will attract your attention on the first glance – interior designed by the famous architect Bořek Šípek, lover of Asia. Not only beautiful appearance is praiseworthy, there is a healthy core hidden under the good look.

It's important to realize that wellness

doesn't mean only massages. This is especially philosophy where relaxation, health and harmony meets at one place. You won't find just a variety of massages, cosmetics, exercises (yoga, pilates), body shaping, nutritional counseling or alternative forms of treatment (Chinese medicine, smoking addiction treatment, homeopathy). There is also a team of professional therapists from around the world who speaks Czech and English fluently. Shy people will undoubtedly appreciate that all therapeutic rooms have a private shower and dressing room.

In the case of Thai massages should be pointed out that the massages are practiced by real Thai therapists that uses more than two and half thousand years old techniques which are passed down from generation to generation. Definitely worth a try is honey massage where the therapist rubs the back with fragrant melted honey and slowly massages it into the skin of the client. Thanks to its nourishing substances contained in



Japanese cosmetics RICE FORCE is a high-end moisturizing natural skin care. The basis is a special extract from the feature called "Rice Power Extract II". The products of RICE FORCE are suitable for all skin types and ages. It's extremely popular among the models, actresses and celebrities in Japan. Getting in the beauty center Wellness Rooseveltova will let you experience how to apply this cosmetic product and how to use it gradually.

honey and the technique of massage movements the toxins in your body will slowly leach out. We also recommend lymphatic massage which supports the immune system and helps preventing health problems.

You should also pay attention to the two-hour massage with body wraps and special novelty – the premium moisturizing natural skin care RICE FORCE, about which you can read more in the article above.

The modern age is so hasty. Work has become not only a duty but also a kind of modern mantra that has slowly but systematically weakened the whole body. If you stop paying him, it will soon betray you. It's good to be able to relax, take the time for yourself or get your body in motion. The Wellness Rooseveltova recharges the lost energy with maximal comfort, convenience and the most professional service. Do not be persuaded. Your health is just one.

th.



Wellness  
Rooseveltova

Rooseveltova 10, Prague 6  
Phone: +420 724 509 115  
[www.centrum-relaxace.cz](http://www.centrum-relaxace.cz)

## WHERE TO WORK OUT



## HIT FITNESS FLÓRA

Chrudimská 2b, Prague 3  
Phone: +420 267 311 447

M12

A sophisticated sport center with a motivating atmosphere and unusual design. It offers a wide range of sports, regenerating and relaxing services such as squash, aerobics, yoga, spinning, gym, etc. There is access and facilities for disabled people, creche, reception with a cosy cafe serving delicious italian coffee, a special store with largest selection of nutritional supplements and beauty parlor. The big advantage is relatively low one time visit fee.



## SATRAPA JACHTING

Hlubočepská 1081/34  
Phone: +420 602 308 122  
www.satrapa-yachting.cz

M14

Do you long for an unhampered cruise to sea or lake? We are offering to you captain's license classes, both inland VMP and sailing cruises, boat rentals. Our fleet of moored boats and motor yachts is berthed at the „Slapy- Žďáň“ base on the Vltava. Here you can also hire a boat outside Czech Republic. For more information please visit our website.



## HARMONY SPA

Rašínovo nábřeží 36, Prague 2  
www.harmonyspa.cz

M14

Harmony SPA is a luxury massage salon in Prague with a pleasant, clean and intimate environment. If you long for relaxation and want to give a great experience for all your senses, you are at the right place. Choose any from an exclusive selection of the best massages: Tantra massages, relaxation massages, experience massages, alquimia rituals and much more. If you visit us together with your partner, try „rituals for couples“ and set for a new journey towards a conscious experience of your life.



## FITNESS KOTVA

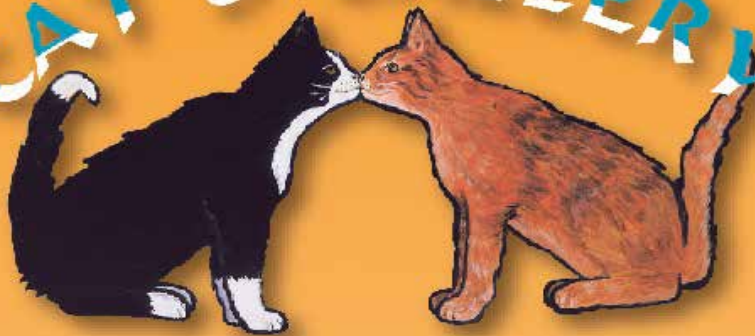
OD Kotva – 4. Patro, Náměstí  
Republiky 656/8, Prague 1

M7

Located on the fourth floor of Kotva shopping centre there is a fitness centrum equipped with the very latest Cybex cardio exercise equipment and a great team of enthusiastic instructors ready to help you every step of the way. After workout you can enjoy a private sauna, solarium or massage. We also have a children's corner and aerobic hall for Trampoline power jumps, Zumba, Power Yoga classes and other sport activities.



# CAT'S GALLERY



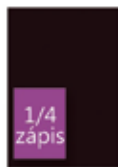
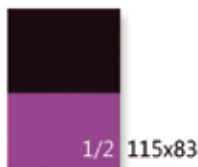
[www.catsgallery.com](http://www.catsgallery.com)

## Cats Art and Trifles:

Pottery - Enamel - Paintings  
Graphics - Pieces and statues  
Textile - Wood - Stones  
Magnets and many more!

---

Týnská 9, Prague 1



## Prices advertising space / 2013

### Ceny inzerce

3. obálka	60.000,- Kč
4. obálka	80.000,- Kč
1. dvoustrana	80.000,- Kč
1/1 strana	35.000,- Kč
1/2 strany	20.000,- Kč
1/3 strany	15.000,- Kč
1/4 strany	10.000,- Kč

### Příplatky:

za konkrétní umístění **15%**

### Slevy:

sleva při opakované inzerci **10-30%**  
dle počtu opakování  
sleva za 100% platbu předem **25%**  
sleva za 50% platbu předem **10%**  
**Všechny uvedené ceny jsou bez DPH (20%)**

### Storno poplatky:

30 dní před uzávěrkou **50%** ceny  
15 dní před uzávěrkou **100%** ceny

**Tisková data je nutno dodat v minimální kvalitě 300 DPI, ve formátu PDF.**  
**U rozměrů 2/1, 1/1 a 1/2 na výšku, je nutno k čistému formátu přidat 5 mm pro ořez.**

2013

Contact:  
info@bp-media.cz

	uzávěrka inzerce	datum vydání
1.	21.12. 2012	25.12. 2012
2.	22.3. 2013	25.3. 2013
3.	28.6. 2013	1.7. 2013
4.	18.10. 2013	21.10. 2013

U některých vydání může dojít k posunu v závislosti na některých důležitých akcí jež se během roku konají

# BATALION<sup>®</sup>

COMICS MUSEUM

BAR & CLUB

SINCE 1880

Křiž  
Sádek<sup>®</sup>

ENJOY 3 FLOORS OF FUN  
CLUB+BAR&CAFE+MUSEUM

(MUSEUM TOUR STARTS EVERY  
30 MIN. AT THE BAR)

SITUATED JUST IN THE CITY CENTER,  
SERVING THE BEST OF CZECH BEERS,  
COCKTAILS AND SOFT DRINKS.

TOP CZECH DARK BEER 45 CZK 0,5LT

*Budweiser*  
*Budvar*

MORE THAN 10 SORTS OF BEER  
ABSINTH MENU, COCKTAILS MENU



ABSINTH MENU  
FROM 65 - 100 CZK

COCKTAIL BAR  
CAPACITY  
FOR 120 PERS

T-SHIRTS - SOUVENIRS - COMICS GALLERY

MUSEUM (OPEN: 12-21, ENTRY 170/100)

BAR&CAFE (OPEN: NONSTOP: 24/7)

CLUB (OPEN: 20:00-7:00)

WWW.BATALION.CZ

WWW.PRAGUE-COMICS-MUSEUM.COM

ADDRESS: 28. ŘÍJNA, PRAHA 1

TEL.: +420 220 108 147



# Unlimited opportunities

## Безграничные возможности

Join us in a world that has no limits. Shopping centre Metropole Zličín can offer you everything you could ever want and has all the space and facilities you need for the best possible use of your leisure time.

Войдите с нами в мир, где нет пределов. Торговый центр Metropole это, то что вам необходимо. Более 140 модных бутиков, товаров и услуг, ресторанов с разнообразной кухней и интересными развлечениями. Это огромное пространство и много возможностей отлично подходит для отдыха.

# 140 SHOPS МАГАЗИНОВ



More information and a complete list of stores here.  
Дополнительную информацию и полный список магазинов найдете здесь.



Airport 10 min. Bus No. 100  
Аэропорт 10 мин. Автобус № 100

[WWW.METROPOLE.CZ](http://WWW.METROPOLE.CZ)



**METROPOLE**  
ZLIČÍN  
CENTRUM MÓDY A ZÁBAVY