

# Bedeker PRAGUE

restaurant guide city guide

3.  
2014  
FREE

Restaurants Cafés Hotels Culture Nightlife

**Everything You Always Wanted  
to Know About Prague\***

*(\*But Were Afraid to Ask)*



DO NOT THRO  
NG  
TAKE A SEAT  
AND RELAX  
IN TICK TACK



**+420 721 300 300**

**taxi@ticktack.cz | www.ticktack.cz**

# TAXI | ALL INCLUSIVE

## Quality and comfort

## Safety and reliability

### WiFi Internet Connection

### 230 V and the possibility of charging mobile devices via USB

### Multimedia Passenger System

- Watching the route on the map
- Exact information about the distance travelled
- Reading the latest news on news portals (idnes.cz etc.)
- Movies (adventure movies, comedies, travel films, etc.)
- Music (Czech, Slovak, rock, foreign, jazz, classical music, etc.)
- TV channels (ČT1, ČT2, ČT24, ČT4, Nova, Prima, TV Barrandov, etc.)
- Internet



music



TV channels



movies



internet



wifi internet



230 V



usb port



## Travel with us all over Prague



# contents

**8**

## facts & info

arriving, public transportations,  
history & the famous sites

**18**

## culture & events

The most popular exhibitions,  
concerts and shows

Interview with Kevin Costner

**30**

## service

Buy the ticket, rent a car or call  
nearest health emergency

**42**

## gastro

Prague's bests restaurants and  
cafés Beer Tips

**56**

## nightlife

Prague by night



# Galerie hlavního města Prahy City Gallery Prague

Jedinečná příležitost poprvé v historii zhlédnout  
unikátní prostory Colloredo- Mansfeldského paláce

For the first time in history, a unique chance to visit  
the original interiors of Colloredo-Mansfeld Palace

Palác Colloredo-Mansfeld  
Colloredo-Mansfeld Palace  
Karlova 189/2, 110 00 Praha 1

Otevřeno denně kromě pondělí 10-16 h  
Open daily except Mondays 10 a.m.-4 p.m.

ghmp

PRAHA  
GALERIE  
PRAGA  
PRAG

COLLOREDO  
MANSFELD



www.ghmp.cz

# Bedeker **PRAGUE**



[ 6 ]

**bpmedia**

**BP Media, a.s.**  
**Ovenceká 28/364, Praha 7, 170 00**  
**[www.bp-media.cz](http://www.bp-media.cz)**

**EDITORIAL:**  
general editor: Tomáš Chvála  
editor: Milada Hrušková  
translation: Vo Anh Tuan

**DESIGN & LAYOUT:**  
BP-Media, a.s.

**SHOP ENSURES:**  
BP MEDIA A.S.

**ADVERTISEMENT ORDER:**  
Ivana Dufková  
[dufkova@bp-media.cz](mailto:dufkova@bp-media.cz)

Roman Sobota  
[sobota@bp-media.cz](mailto:sobota@bp-media.cz)

**DISTRIBUTION:**  
GRAND PRINC MEDIA, a.s.  
BP - Media a.s.

**COVER PHOTO:**  
[www.czechtourism.cz](http://www.czechtourism.cz)

Free distribution on selected places  
four times per year

Issue 3/2014 published: 5.7.2014

Registration: MK ČR E 19383

# café Louvre

e s t . 1 9 0 2



**Where you have been  
making history.  
Already 111 years.**



**CAFÉ LOUVRE,** Národní třída 22, Praha 1, tel. 224 930 949  
[cafelouvre@cafelouvre.cz](mailto:cafelouvre@cafelouvre.cz), [www.cafelouvre.cz](http://www.cafelouvre.cz)



# [→] WELCOME TO PRAGUE!



Welcome to Prague! Whether you've just landed, arrived by train, bus or car, we've got the allimportant low down on how to reach the city center using all the possible means of transportation, whether on a tight budget or otherwise.

## ↓ 1. ARRIVING IN PRAGUE BY PLANE

The airport is located on the northwest edge of Prague, some 20km (12 miles) from the city center. Although Prague boasts other, smaller airports, all international flights operate through Ruzyně. Important related phone numbers include +420 220 113 314 (general info), +420 220 116 072 (baggage claim) and +420 220 114 283 (lost & found).

## ↓ GETTING TO THE CITY CENTRE

If you've just arrived at the airport, getting downtown is generally, depending on the traffic, a matter of some 20 to 30 minutes (if you make use of a taxi or a shuttle service; see below), or 50 minutes if you use the cheaper yet convenient and comfortable public transportation.



Добро пожаловать в Прагу! Если вы только что приземлились, прибыли на поезде, автобусе или автомобиле, у нас есть все важные данные о том, как добраться до центра города, используя все возможные виды транспорта в зависимости от ваших средств.

## ↓ 1. ПРИБЫТИЕ В ПРАГУ НА САМОЛЕТЕ

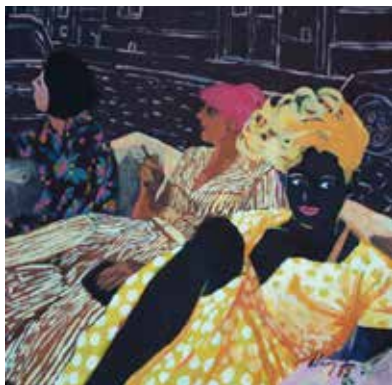
Аэропорт расположен на северозападной окраине Праги, приблизительно в 20 км от центра города. Хотя Прага может похвастаться другими, меньшими аэропортами, все международные рейсы осуществляются через аэропорт Рузине. Необходимыми телефонными номерами являются +420 220 113 314 (общая информация), +420 220 116 072 (багаж) и +420 220 114 283 (стол находок).

## ↓ КАК ДОБРАТЬСЯ ДО ЦЕНТРА ГОРОДА

Если вы только что прибыли в аэропорт, возможность добраться до центра города, как правило зависит от транспорта. Интервалы составляют от 20 до 30 минут (в том случае, если вы пользуетесь такси

## Galerie La Femme – Woman as an eternal inspiration

The Gallery La Femme was launched in 2000 and is located in Bílkovastreet in the Old Town. Its main theme is woman as the eternal source of artistic inspiration – you can see her here in endless variations, sizes and colours. The gallery also organises interesting projects, some of which are for example regular Homework assignments as well as international symposia. For Homework assignments, the gallerist addresses about seventy Czech artists, who then create a painting on a common topic, such as Mona Lisa or Homage to Edith Piaf.



Bára Olmrová – Girls in the Street

**GALERIE  
LA FEMME**

Galerie La Femme, Bílkova 2, Prague 1 – opposite  
the Hotel Intercontinental, [info@glf.cz](mailto:info@glf.cz), [www.glf.cz](http://www.glf.cz)



Roman Brichcín – Jazzcafé



## FACTS &amp; INFO

↓...BY PUBLIC  
TRANSPORTATION

Bus presents the cheapest way of reaching city center. It links the airport with the terminus of one of Prague's three subway lines. The drawback may be the fact that you need to buy a bus ticket, for which you'll need Czech crowns. Use the ATMs in the arrivals hall to get Czech crowns, rather than changing money at the overpriced exchange offices. You can either buy your ticket from the kiosk or the transport information desk in both arrival halls (open 7AM – 10PM), from the coin vending machines located right at the bus stop platform, or directly from the driver, although this will cost a couple extra crowns. The ticket price is 26 Czech crowns (1EUR / 1.3USD) for

transfer ticket that remains valid for the follow-up subway ride, or for a total of 75 minutes, plus an extra 13 crowns for larger pieces of luggage.

## BUS # 119

This will probably be most people's choice as the 119 provides the quickest connection to the historical center. Depending on the time of day, it runs every 7 to 20 minutes and gets you to the A line of Prague's subway. Hop on, remember to validate your ticket, and don't get off until the final stop (Dejvická). The subway entrance is just next to where you get off. The bus runs from 4:18AM until around 12:10 AM at night.

## BUS # 100

The 100 bus links the airport with the B-line of the Prague subway. Just get off at Zličín, the final stop. The 100 runs every 15 minutes throughout the day and every half hour after 7PM. The ride takes 15 minutes, but expect another 20 minutes

или трансфером, см. ниже), или 50 минут, если вы пользуетесь более дешевым и удобным общественным транспортом.

↓... НА ОБЩЕСТВЕННОМ  
ТРАНСПОРТЕ

Автобус представляет самый дешевый способ как добраться до центра Праги. Он связывает аэропорт с терминалом одной из трех линий пражского метро. Недостатком является то, что вам будут нужны чешские кроны, чтобы купить билет на автобус. Пользуйтесь банкоматами в зале прибытия, чтобы получить чешские кроны, а не менять деньги в обменных пунктах по повышенной цене.

Вы можете купить билет в киоске или в информационном бюро в обоих залах прибытия (работает с 7 утра до 10 вечера), из монетных автоматов, расположенных на автобусной остановке, или прямо у водителя, хотя это будет стоить пару дополнительных крон.

Цена билета с пересадкой составляет 26 чешских крон (1EUR / 1.3USD). Он остается в силе для следующей поездки метро - в общей сложности действителен в течение 75 минут. Для багажа больших размеров вы заплатите следующих 13 крон. Обратите внимание на то, что торговые автоматы и шоферы не принимают иностранную валюту. Автобус удобный, чистый и безопасный способ сообщения с центром Праги для тех, кто хочет экономить. Однако, автобус может быть довольно переполненным в часе пик!

## АВТОБУС № 119

Вероятно, большинство людей выберет автобус № 119, который обеспечивает быструю связь с историческим центром. В зависимости от времени суток, он ездит каждые 7 - 20 минут и соединяет пассажиров с линией пражского метро. Садитесь на автобус и не забудьте закопостриговать свой билет. Поезжайте до конечной станции метро



**Regular concerts in the  
Spanish Synagogue  
4 times a week from 7:00 p.m.**

**Selection of Mozart's Operas  
in the Estates theatre in project  
Mozartissimo**

## Bolero

The best of czech and world music

The best of Gershwin

Jewish mystical melodies

## Mozartissimo

18, 20 and 23 August at 8:00 p.m.

5 and 29 September at 5:00 p.m.

6, 18 and 27 October at 5:00 p.m.



Spanish Synagogue



Estates Theatre

[www.bmart.cz](http://www.bmart.cz)



## TWO FLOORS OF EXPERIENCE

*Два этажа истории  
чешского пива*

**CZECH BEER HISTORY  
AND BREWING  
TRADITION IN ONE SPOT**

*История и традиции  
Чешского пивоварения  
отрасли в одном месте*

**BEER TASTING INCLUDED**

*Дегустация пива –  
входит в цену билета*

**HISTORICAL CELLAR**

*Исторические погребы*

+420 778 072 337

[www.beermuseum.cz](http://www.beermuseum.cz)

HUSOVA 7 PRAHA 1



**THE BIGGEST BEER  
EXHIBITION IN PRAGUE.**



## FACTS & INFO

of subway ride if you're aiming to reach the city center afterwards by metro. The bus runs from 5:30AM until around 11:50 PM.

## AIRPORT EXPRESS BUS

The Airport Express bus service links the airport with the Hlavní nadrazi train station; it runs every half hour and the ride takes 40 minutes. Although part of Prague's public transportation system, special fares apply: tickets can be purchased solely from the driver and run for 50 crowns (with no extra luggage fees). The AE runs from from 5:00AM to 10:00PM.

## TRAVELLING AT NIGHT

If you want to use the public transportation at night, look out for the # 510 bus, operating between midnight and 3.30AM and linking the airport with the tram at Divoka Sarka. From there, take the tram # 51 to the city center. Note that the night bus runs every 30 minutes.

### ↓...BY SHUTTLE

Various companies run shuttle door-to-door services, or drop you off at the city center. They are generally priced lower compared to taxis, and can be easily found outside the terminals. The CEDAZ minibus shuttles run every half hour and costs 120 crowns per person, dropping you off at the city center. The service operates between 5:30AM and 9:30PM. CEDAZ will also drive you directly to any given address, but you need to pre-book (call +420 220 116 758 or go to [www.cedaz.cz](http://www.cedaz.cz)). Other shuttle services include Prague Airport Transfers who accept credit cards ([www.prague-airport-transfers.com](http://www.prague-airport-transfers.com)).

Дейвица. Вход в метро находится рядом с местом, где вы будете выходить из автобуса. Автобус курсирует с 4ч. 18мин. утра примерно до 00 ч. 10 мин.

## АВТОБУС № 100

Автобус № 100 соединяет аэропорт с линией Б пражского метро. Выйдите на конечной остановке Зличин. Автобус № 100 ходит каждые 15 минут в течение дня и каждые полчаса после 7 часов вечера. Поездка продолжается 15 минут, но вас ждет еще 20 минут езды на метро, если вы на нем собираетесь добираться до центра города. Автобус курсирует с 5ч. 30мин. утра примерно до 23ч.50мин. ночи.

## АВТОБУС AIRPORT EXPRESS

Автобус Airport Express (AE) связывает аэропорт с Главным вокзалом (Hlavní nadrazi). Он ездит каждые полчаса, и поездка длится 40 минут. Хотя AE является частью системы общественного транспорта Праги, здесь применяются специальные тарифы: билеты можно приобрести только у водителя и в цене 50 крон (без дополнительной оплаты за багаж). AE ездит с 5ч. утра до 10ч. вечера.

## НОЧНЫЕ РЕЙСЫ

Если вы хотите использовать общественный транспорт в ночное время, обратите внимание на автобус № 510, который ездит между полночью и 3ч. 30мин. утра и связывает аэропорт с трамваем на остановке Дивока Шарка (Divoka Sarka). Оттуда добирайтесь на трамвае № 51 до центра города. Обратите внимание - ночной автобус ходит каждые 30 минут.

## ↓..НА МАРШРУТНОМ ТАКСИ

Различные компании используют челночное сообщение „от двери до двери ... или высаживают вас в центре города. Их цены, как правило, ниже, чем в такси, и такой тип такси можно легко найти за пределами терминалов. Челночные микроавтобусы CEDAZ ходят каждые полчаса, и проезд в центр города стоит 120 крон на человека. Микроавтобус курсирует с 5ч.30мин. утра до 9ч.30мин. вечера. CE-

## ↓...BY TAXI

Prague taxi drivers are notorious for overcharging tourists. Generally, you should be on the safe side with the fleet of AAA-labelled taxis waiting in front of the terminal. The ride will cost around 500 – 700 crowns. Don't shy away from contacting a competing company, but make sure to always check the price beforehand, whatever company you've chosen! You shouldn't ever have to pay over 900 crowns.

DAZ вас также отвезет по любому заранее заказанному адресу (+420 211 111 111 или посетите [www.cedaz.cz](http://www.cedaz.cz)). Другие услуги включают трансфер из Аэропорта Прага, где принимают кредитные карты ([www.prague-aeroporto-transfers.com](http://www.prague-aeroporto-transfers.com)).

## ↓... НА ТАКСИ

Пражские таксисты известны своим обчитыванием туристов. Поэтому на всякий случай пользуйтесь такси с надписью AAA, ожидающих перед терминалом. Поездка будет стоить около 500 - 700 крон. Не бойтесь воспользоваться услугами конкурирующих компаний, но заранее убедитесь в цене. Независимо от компании, которую вы выбрали, вы никогда не должны платить более 900 крон.



## ↓2. ARRIVING IN PRAGUE BY TRAIN

International trains arrive at the central station, Hlavní nádraží, often referred to as Praha hl.n. The station is directly connected with Prague's subway system and located right in the city centre. If arriving after dark, we highly recommend hopping on the subway (remember to buy a ticket) rather than walking out and through the surrounding park. Most of the station itself has just been refurbished and boasts a modern look with plenty of kiosks, drug stores and fast-food joints.

## ↓2. ПРИЕЗД В ПРАГУ НА ПОЕЗДЕ

Международные поезда прибывают на центральную станцию, Hlavní nádraží, часто называемую Praha hl.n. Станция непосредственно связана с пражским метро и расположена в самом центре города. Если вы прибываете после наступления темноты, мы настоятельно рекомендуем вам ехать на метро (не забудьте купить билет) и не проходить через окружающий парк. Большая часть самой станции только что была отремонтирована и может похвастаться современным видом с множеством киосков, аптек и ресторанов быстрого питания.

## FACTS &amp; INFO

## 3. ARRIVING IN PRAGUE BY BUS

Florenc is the central bus station; located in the city centre, it is also directly adjacent to Prague subway's station Florenc (a transfer station between the lines C and B). Like the central train station, Florenc has recently undergone a major facelift and now boasts a pleasant and clean arrivals & departures hall with kiosks and fast-foods (Burger King, anyone?), and most importantly a big screen showing the bus times and the respective platforms.

## 3. Приезд в Прагу на автобусе

Флоренц не только является центральной автобусной станцией, расположенной в центре города, но и в непосредственной близости от пражской станции метро Флоренц (переход между линиями С и В). Как и центральный железнодорожный вокзал, станция Флоренц недавно подверглась значительной реконструкции и теперь может похвастаться приятным и чистым залом приездов и отъездов с киосками и ресторанами фаст-фуд (желаете Burger King?), а самое главное - большим экраном с отъездами и приездами автобусов и с указанием соответствующих платформ.



## 4. ARRIVING IN PRAGUE BY CAR

Prague falls victim to traffic jams and a lack of legal parking spaces (streets with blue-marked areas on the side are reserved for residents and you run the risk of having your car towed if you park there). This is why we recommend using the so-called P+R's (park and ride) parking places, situated near all highways. Find more info at [www.dpp.cz/en/parking](http://www.dpp.cz/en/parking).

## 4. Приезд в Прагу на автомобиле

Прага становится жертвой пробок и недостатком законных парковочных мест. Улицы с полосой синего цвета на стороне означают области зарезервированные для жителей. В этом случае вы рискуете, что ваш автомобиль будет отбуксирован при паркинге. Именно поэтому мы рекомендуем использовать так называемые стоянки парк анд райд (P + R) - парковочные места, расположенные вблизи всех магистралей. Более подробную информацию найдете на [www.dpp.cz/en/parking](http://www.dpp.cz/en/parking).

## PRAGUE'S PUBLIC TRANSPORTATION SYSTEM

Prague's public transportation system is generally reasonably clean, very efficient, runs on time, and its network spans the whole city; with the price of 32 CZK for a transfer ticket (1EUR / 1.3USD), it cannot be beat. If you don't need to venture out of the center, you can confine to using the subway (or metro, as it's called here) and trams; buses service the further-away neighbourhoods. Let's look more closely at the various tickets you can purchase.

Tickets can be bought from the numerous vending machines in all the metro stations and at many tram stops (always keep coins at hand), or from most tobacco stores / kiosks.

**24-hour pass:** 110 CZK  
**3-day pass:** (72 hours): 310 CZK

### ONE-OFF TICKETS

30 min. / 5 stops / no transfer ticket: 24 CZK, 90 min. transfer ticket: 32 CZK

Remember to validate your ticket upon first entering the metro / boarding a tram or bus. (i.e. slip the ticket into one of the yellow boxes and wait for the info to be stamped on it).

For more information about Prague Public transport visit [www.dpp.cz](http://www.dpp.cz) or call the free info line 296 191 817.

## СИСТЕМА ОБЩЕСТВЕННОГО ТРАНСПОРТА В ПРАГЕ

Общественный транспорт в Праге, как правило, достаточно чистый, очень эффективный и точный. Его сеть охватывает весь город. Цена билета 32 крон за поездку с пересадкой (1EUR / 1.3USD) очень выгодна. Если вам не надо выходить из центра, вы можете ограничиться метро и трамваями. Автобусы следуют в окрестности города. Давайте более внимательно рассмотрим различные

типы билетов, которые можно приобрести. Билеты можно приобрести в многочисленных торговых автоматах на всех станциях метро и на многих трамвайных остановках (всегда имейте при себе монеты), или в большинстве табачных магазинов или киосков.

**Суточный билет (24 часа):** 110 крон  
**Трехдневный билет(72 часа):** 310 крон

### РАЗОВЫЕ БИЛЕТЫ

30 минут / 5 остановок / без пересадки: 24 крон  
90 минут /с пересадкой: 32 крон

Не забудьте закопостировать свой билет при первом входе в метро, в трамвай или в автобус. (т.е. вложите билет в одну из желтых коробок и подождите пока билет не будет закопостирован). Для получения дополнительной информации о пражском общественном транспорте посетите [www.dpp.cz](http://www.dpp.cz) или трансформируйтесь по телефону на бесплатной линии 296 191 817.



ANTIQUE  
U UHELNEHO TRHU

CZECHOSLOVAKIA 6SSR PROOF COMMEMORATIVE AND ANNUAL COINS

Skořepka 8, 110 00 Prague 1, Czech Republic  
tel: +420 224 234 696  
opening hours: Mo - Sa 10:00 - 18:00  
[www.numismatik-mince.cz](http://www.numismatik-mince.cz)

## FACTS &amp; INFO

For over 1000 years, Prague has served as the political, cultural and economic centre of the Czech state. Having been the seat of two Holy Roman Emperors during the gothic and renaissance periods, it also had the status of the Holy Roman Empire capital. Prague's history commenced in the year 870, although evidence shows the area had been inhabited since the Stone Age. The city flourished during the 14th century, under the reign of King Charles IV, who, among other deeds, ordered the building of the famous Charles Bridge or Saint Vitus Cathedral, the oldest gothic cathedral in central Europe, and Charles University, the oldest university in central Europe. Prague was then the third-largest city in Europe. Now home to some 1.2 million inhabitants, Prague became the capital of the newly set up Czechoslovakia in 1918, with the end of WW I and the dissolution of the Austro-Hungarian Empire. In 1992, Prague's historic center became a UNESCO world heritage site, and is currently one of the world's most popular tourist destinations.

На протяжении более 1000 лет, Прага служит политическим, культурным и экономическим центром чешского государства. Она была пристольным городом двух императоров Священной Римской империи в готическом периоде и в эпохе Возрождения. Прага также имела статус столицы Священной Римской империи. История Праги началась в 870г., хотя есть сведения о том, что область была населена с периода каменного века. Город процветал в течение 14-го века, во времена правления короля Карла IV, который, наряду с другими проектами, приказал построить знаменитый Карлов мост, кафедральный готический собор Святого Вита, и Карлов университет - старейшие постройки в Центральной Европе. В то время Прага была третьим по величине городом Европы. Сейчас здесь проживает около 1,2 млн. человек. После окончания Первой мировой войны и распада Австро-Венгерской империи в 1918 году Прага стала столицей вновь созданной Чехословакии. В 1992 году исторический центр Праги стал принадлежать к Всемирному наследию ЮНЕСКО, и в настоящее время является одним из самых популярных туристических мест в мире.





## Indoor Go-Kart arena

PKA - Prague karting arena's raceway at Letnany, North Prague, is an excellent venue for individual drivers, private groups and corporate events. With its superb racing facilities and catering services, state-of-the-art race computer systems, multilevel track with 15 meters long bridge and fleet of expertly prepared karts, you can be assured of the thrills of wheel to wheel action that Karting in PKA provides.

PKA is widely recognised as the founder of modern go kart racing for teenagers & adults in Prague and have been at the forefront of indoor go Karting since 1999, developing the sport into one of the most exciting and accessible forms of motor racing today.

Indoor go Karting is not only a thrilling experience, but also great fun, and whether you are a novice or a potential Formula 1 driver, you will find that PKA's fast and furious go Karting race sessions are geared up to give you an adrenalin-filled event to remember!

The track is open all the year from Monday to Friday from 14.00 to midnight and from 10.00 am until midnight on Saturdays and Sundays.

They can be found on crossroads of Toužimská and Ašská street in Prague 9 - Letnany. You can use bus number: 158 from terminal station of Metro (underground) line "C" to station "Stare Letnany" it takes four minutes.

For reservations  
call: +420 777 311 856  
or visit [www.praguekartingarena.com](http://www.praguekartingarena.com)

## PRAGUE KARTING ARENA



**Thrilling 600 meters long track with breathtaking 15 meters long bridge with special asphalt concrete illuminated with power LED technology.**

**12 fast Subaru 7hp go karts with computerized scoring system.**

**100 seats in bar-restaurant with the whole track view.**

**Easily accessed from the City centre by subway line „C”.**

**Special prices for stag and hen party groups !**

**Call +420 777 311 856 for reservation !**

## NEW AGE, OLD HABITS

**T**he classic movies need to stay untouched. We all know that. You can try the new version, but you must respect the basics.

When Michael Bay came up with the idea of the new Teenage Mutant Ninja Turtles coming from space, fans had fainted. They were fortunately loud enough to make Bay realize the nonsense and brings us another honest mutants. And it's not the only thing in cinemas during which the nostalgic viewers will shiver in delight.

The Expendables 3, with their stellar cast enriched by Harrison Ford, Mel Gibson and Wesley Snipes, are also entering the cinema screens. Part of the interest will be stolen by "Star Wars in Marvel Universe" - Guardians of the Galaxy. In the musical sphere, you will be amazed by Blink-182, Calvin Harris and Pharrell Williams.

And then there's Sex Tape Cameron Diaz, which is something that we were praying for years...

*th.*



## GUARDIANS OF THE GALAXY

Action / Comedy / Sci-fi, USA, 2014  
 Director: James Gunn, Stars: Chris Pratt, Zoë Saldana, Dave Bautista  
 Release date: 31.7.2014

Adventurer Peter becomes the target of hired killers after stealing a mysterious ball from Ronan, powerful villain with

plans threatening the entire universe. For the escape from tireless Ronan, Quill is forced to join forces with four notable heroes - Rock, heavily armed Raccoon, Groot, humanoid, which resembles a tree, a fierce and mysterious Gamora and vengeful Drax the Destroyer. But when Quill discovers the true power of the ball and the threat that it hides and threatens the entire universe, it is clear that the fate of the galaxy is in his hands.



## THE PURGE: ANARCHY

Horror, USA, 2014

Director: James DeMonaco

Stars: Frank Grillo, Michael Kenneth Williams, Zach Gilford

Release date: 31.7.2014

Once a year, the American streets have always turned into a living hell for twelve hours of the night. The emergency services don't work at all throughout the night and all crimes, including the hardest ones, are completely legal. This brutal night is called the Purge. Director James DeMonaco year ago positively shocked the audience by the



low-budget thriller with „purifying“ original idea, for which the Purge was rewarded with extraordinary results in cinemas. So naturally the 2nd movie came along. Especially when its predecessor made a number of troubling questions and did not replied to all of them.



Within single day, the city Silverton is devastated by an unprecedented onslaught of tornadoes. The whole city is casted adrift to the unpredictable deadly windstorms and the predictions tell us that the worst is yet to come. Most of people are looking for safe shelter, while the others are attracted to

## INTO THE STORM

Thriller, USA, 2014

Director: Steven Quale

Stars: Richard Armitage, Sarah Wayne Callies, Jeremy Sumpter, Nathan Kress

Release date: 7.8.2014

the wind vortex and watching how close the tornado hunter can get an image that can be captured only once in a lifetime. The story is shot through eyes and lenses of professional tornado hunters, amateur thrill seekers and brave inhabitants. The movie will throw you right in the eye of the windstorm.

## CALVIN HARRIS - ONLY OPEN AIR FESTIVAL PRAGUE

Výstaviště Holešovice, Prague 7

Price: 750 - 2900 Kč

8.8.2014

See the premiere of the new Prague festival! Twelve hours long show of leading stars of dance music scene will take place in the Incheba Expo Prague. The first Only Open Air Festival will be led by the Scottish DJ, producer and singer Calvin Harris. The special performance in Prague will be also the only one within the tour in the Czech Republic, Poland,



Slovakia and Austria this year. As the name suggests, you can look forward a festival with action under open sky. The entire festival will offer a minimum of seven international artists of present EDM and interesting festival program.

## EXPENDABLES 3

Action / Comedy, USA, 2014

Director: Patrick Hughes

Stars: Sylvester Stallone, Jason Statham, Jet Li, Mel Gibson, Wesley Snipes, Arnold Schwarzenegger, Harrison Ford

Release date: 14.8.2014

Barney, Christmas and the rest of the team will face Stonebanks in the third movie, who founded the Expendables with Barney years ago. Later Stonebanks became a ruthless weapon dealer and someone who had to be killed by Barney as he thought so. Stonebanks escaped death for the second time and now he



has a plan to end the Expendables but Barney sees it differently. He decides to bring new members of the new era to fight against the old blood with the young one. He hires individuals which are younger, stronger and technically advanced.

## BLINK-182

Tipsport Arena, Prague 7

Price: 888 Kč

15.8.2014

Without distinctive trio Blink-182 the music world would be deprived of big dose of good music, which is adorned with catchy melodies. Festival Rock for People and promoting group Conspiracy joined their powers to create their Prague show, which will take place on Friday the 15th of August in Prague Tipsport Arena. The opening act of the headliners, Blink-182, will introduce punk trio Gnarwolves from Brighton in England and the American Band A Wilhelm Scream producing melodic hardcore-punk with emphasis on instrumental perfection.



## AIR FESTIVAL 2014

Festivalpark, Hradec Králové

Price: 199 - 1390 Kč

15.8.2014



The new festival AIR set the music level very high. And they needed just two same letters – W&W, which are hiding two names – Will van Hanegem and Wardt van der Harst. The natives of the Dutch city of Breda, which has been breeding ground for superstar DJs like Hardwell, Tiësto or Dannic, are not needed to introduce to our domestic audience. We have experienced their top trance era with them and they managed to prove that their music shift which they made during recent years was the best choice they could make. W&W will be the headliners of the main stage on Friday.

# CAT'S GALLERY

Týnská 9, Praha 1



The idea that we should establish a cat gallery arose long before its realization. While visiting various foreign cities and buying cat-souvenirs we sometimes came across a specialized shop for cat-lovers, but we hadn't seen something of that kind in our country.

Owing to our affection to cats we have piled up an unbelievable amount of drawings, pictures, cups, variety of pieces and small sculptures and the like to diverse occasions at home and so it was slowly but surely necessary to create an especially detached chamber for them. When we considered about it, we figured out that also the others can enjoy and share our passion for cats! We are just only going to get some more, enlarge our cat-park and open a sell-gallery!

On the first of November 2001 after a thorough selection we acquired a space in Týnská street and in fortnight we opened the shop.

Nowadays the biggest reward for us is when we see twinkling faces of our visitors and particularly cat- and animal-lovers how they exult admiring miscellaneous trifles with cat motifs.



## CULTURE &amp; EVENTS

## TREASURES OF ANCIENT CHINA

Imperial Stables, Prague 1  
Price: from 60 Kč  
Release date: 8.8.2014

Exhibition Treasures of Ancient China represent more than 90 exhibits which show us five thousand years of Chinese history from Neolith to the last ruling dynasty. Exhibits are borrowed from outstanding museums in China. Exhibition is divided in three parts. The first part shows us the beginning of Chinese civilization and formation of first states. The second part takes care about cultural boom in the 10th century AD. The



most important exhibits in this part are two soldiers from famous Terra-cotta Army of the first emperor from dynasty Cchin. In the last part we can see exhibits from approximately five hundred years of the last two dynasties, for example Buddhist art, clothing and especially gorgeous porcelain.

## SEX TAPE

Comedy, USA, 2014  
Director: Jake Kasdan  
Stars: Jason Segel, Cameron Diaz  
Release date: 21.8.2014



When Jay (Segel) and Annie (Diaz) have met for the first time, their mutual feelings were really strong – but ten years and two children later, their love needs a little encouragement. In order to renew their passion, they decide to – why not? – shoot a three hours long uninterrupted video in which they try all the position from the sex book. It seems like a great idea until they discover that their most private recording is not private anymore. At the stake of their reputation, they are realizing that just one click is enough to literally strip them in front of the world.

New York desperately needs some heroes. The city is controlled by fear and almighty Shredder (William Fichtner), whose position of the ruler of underworld is quite unbeatable until the appearance of four amphibians with extraordinary abilities in the municipal sewer after the genetic experiment failure. Where are Michelangelo, Donatello, Leonardo and Raphael, must be a curious reporter April, played by still-hottie Megan Fox. Legendary turtle quartet is back under production control of Michael Bay (Transformers) with beautiful Megan Fox in the role of April O'Neil. This will be fun!

## NINJA TURTLES

Action / Comedy / Sci-fi, USA, 2014  
Director: Jonathan Liebesman  
Stars: Megan Fox, William Fichtner  
Release date: 28.8.2014





## PHARRELL WILLIAMS: THE DEAR G I R L TOUR

O2 arena, Prague 9  
Price: from 990 Kč  
17.9.2014



A multiple Grammy Award winner, songwriter, producer and fashion guru is one of the most successful and prolific artists in the world. He is a member of the producer duo The Neptunes, where he works with his friend Chad Hugo, and alternative trio N.E.R.D., where are both of them and Pharrell's childhood

friend Shay Haley. Both of these groups are selling millions of records and have a number of prestigious awards. In the beginning of the March, singer, songwriter and producer Pharrell announced his second album *Girl*, whose publication was reported with the single *Happy*, which was nominated for an Oscar.

## KUBISTA

Dům U Černé Matky Boží  
Ovocný trh 19, Prague 1  
Phone: +420 224 236 378  
[www.kubista.cz](http://www.kubista.cz)  
Tue-Sat 10-19, Su 12-19

Gallery Kubista, founded in 2002, was established as a platform for exploring the treasures of Czech classical art, architecture and design. Since its inception, the team anxiously ensures that in its unique space in a unique location is presented the best of the major eras of the last century, particularly the Czech Cubism and Art Deco. Gallery Kubista will be your guide to Czech utility art of the early modern era 20th century. The originals, replicas and unique design inspired by the classic Bohemian period of Czech Cubism, a wide selection of exclusive porcelain, ceramics, glass, textiles, jewelry, books, furniture, all this is waiting for you in the gallery.



## GALERIE LAFEMME

Bílková 2, Prague 1  
Phone: +420 224 812 656  
[www.glf.cz](http://www.glf.cz), Mon-Sun 10-18



Popular small gallery with a large range of contemporary Czech art exhibits works by both famous Czech artist and the young generation. The visitor has a great chance that he will find the right one for his home or office in a wide range of works, and at the same time he will invest in quality art. By the end of August the exhibition *The Art Mix*, dedicated to images, computer graphics and sculptures of contemporary Czech and Slovak artists. Among the planned exhibition in the next months are included works by Barbara Olmrová, Rudolf Brančovský and Miroslav Jiránek. In addition, you should not miss the exhibition *Paintings from the Symposium in Sicily*.

# FEEL LIKE IN HOLLYWOOD!



**A**lthough you won't find any Hollywood movie stars in the Czech streets, many of them were filming here. So you can make a picture of Czech sites that adorn a lot of famous Hollywood movies.

We have to start with the blockbuster Mission: Impossible from 1996 with Tom Cruise in the lead role. It was the first major Hollywood production that visited Prague and the filmmakers had used a number of gorgeous Prague scenes. The party at the embassy was filmed at the National Museum, the escape from modern glass restaurant (cover photo) on the Old Town Square. In this case, however, keep in mind that the restaurant itself doesn't exist – it was made just for the purpose of filming the movie.

After 15 years the production of Mission: Impossible returned to Prague, this time with the fourth chapter – Ghost Protocol. They used the Main Railway Station (the opening scene with killed agent) or the corner house in the street Pštrossova 17, where Ethan Hunt ran from the police. In 2002 Anthony Hopkins and Chris Rock visited Prague together to shoot an action thriller Bad Company. Rock was chased

by bad guys in Thun Street in Lesser Town (Malá Strana), Hopkins' agent went to help him through Castle stairs (Zámecké schody). Together they went to the Castle Square. They also used the Shooter's Island (Střelecký ostrov) in the Old Town (the scene with atomic bomb dealer).

Even the legendary vampire slayer Blade used the streets of Prague in his second adventure movie. From the entrance next to the pizzeria in the Sokolovská Street, the filmmakers made a vampire blood bank. And for the seat of vampire family Damaskinos they used secluded place of Vaničková Street.



Prague had a key role in the action movie of Vin Diesel xXx filmed in 2002. Beginning of the movie was shot on the Old Town Square (the producers managed to depopulate it, which was almost an im-

possible task), then the camera wandered the Týnská Street, the Powder Gate, the Republic Square and the seat of the Czech philharmonic – Rudolfinum. In 2004 our country was visited by Wolverine – Hugh Jackman, in those times wi-



thout his comic book claws, but with his long coat and hat as Van Helsing. The battle in the village with three brides of Dracula (probably the best part of the movie) was filmed at the Kunratice Castle in Prague 4. Then the hero walks the street Na Kampě under the Charles Bridge, where



one of the brides offers him a trade. The magnificent ball of vampires was filmed in the Saint Nicholas Church.

This list of Hollywood hits, which included Prague to its scenes, naturally doesn't end. Furthermore, there were shot movies like The Bourne Identity (street Kampa, street of Political prisoners, the Senovážná square) or A Knight's Tale (Prague Castle, the Charles Bridge). Before the walk in our metropolis we recommend to watch all of these mentioned movies.

th.

# SEGWAY TOURS

## 3 HOURS TOUR IN 7 LANGUAGES

PHONE

+420 731 238 264

MEETING POINT NEAR CHARLES BRIDGE

OUR PRICE

1500 CZK  
/PERSON

segwayfun.eu

# INTERVIEW: Vlastimil Musil

**H** *He deals with Bohemian garnet processing already for 30 years. The production of jewellery becomes for him almost whole-life fulfilment of interests. In the interview with him, you can simply recognize a love to craft: Even after such a long time, he can't talk about the garnet without a spark in his eyes. And also, he has a penchant for tie clips and cufflinks. That all is the sales and marketing director of co-operative Granát Turnov Vlastimil Musil.*

**Can you describe, in what lies the uniqueness of Bohemian garnet?**

Bohemian garnet is unique because of its originality and bloody red color. Because we mine and process it in Czech Republic, it became our national tradition and national wealth. Its bloody red color is unmistakable and together with the tradition and national meaning that stone makes also the whole jewel unique.

**How is it with Bohemian garnet worldwide?**

Our co-operative has its customers worldwide, from United States through Europe to Japan. Ask foreign tourists, they'll tell you, what am I talking about. Jewelry with Bohemian garnets are very favored between foreign tourists or customers in foreign countries.

**Why would you recommend Bohemian garnet?**

A customer, who bought original jewel with Bohemian garnet, chose a right variant. He bought something original, he bought a present or jewel, which has a direct relation to visited country, and when he wears this jewel, even after a long time, he will remember with a pleasure those nice whiles spent in Prague or in other Czech city or town.

**How one recognizes Bohemian garnet?**

Jewelry with Bohemian garnets have its specific characteristics and shape. Since Bohemian garnets are quite little stones, the jewel is characteristic by a big field of small, bloody red stones. Its size is roughly 2.5 to 5 mm. Original jewellery is delivered together with a certificate of authenticity, which is equipped with a holographic label in a shape of logo of our co-operative and it is made under trademarks Český granát (Bohemian garnet) and Granát Turnov (Garnet Turnov). Each jewel is marked by hall-mark in a shape of letter "G".

**You lead even a museum of Bohemian garnet in Turnov. What all does it offer?**

A visitor may become familiar there with a history of both the extraction, and also processing of Bohemian garnet. Even more this year, we'll celebrate 60 years of this tradition. In museum, customer center and Galerie Granát (Gallery Garnet) we perform these works to visitors and they can try then the production themselves.

That is very impressive and it catches eye of many incomers. In ground floor, there are our stores, where tourists can buy our goods with advantage.





Granát, artistic manufacturing cooperative, Turnov The manufacturer of the traditional jewelry from Bohemian garnet. The biggest collection with modern design patterns. The only owner of a Bohemian garnet strip mine.

Shops: Praha 1, Dlouhá 28 a 30 - Praha1, Panská 1 - Praha 1, Panská pasáž,  
Na Příkopě 23 - Turnov, nám. Českého ráje 4 - Liberec, Pražská 502/3 - České  
Budějovice, Dr. Stejskala 9 - Český Krumlov, Latrán 53

[www.granat.cz](http://www.granat.cz), [www.granat-shop.cz](http://www.granat-shop.cz)





## PYLONES DESIGN SHOP

Karlova 178/22, 110 00 Praha 1  
Phone: +420 774 772 402  
[www.pylones-eshop.cz](http://www.pylones-eshop.cz)

PYLONES designs, manufactures and retails a range of beautifully designed household objects which are fun, colorful and affordable. By producing its own-label products in the company's distinctive packaging, PYLONES offers its customers an ideal gift-shopping experience. With a range including kitchen instruments, bathroom accessories, office supplies, baby gifts, jewellery, stationery and personal accessories, every product is designed and produced exclusively for PYLONES.



## GRANÁT TURNOV

ГРАНАТ ТУРНОВ

Dlouhá 28 - P-1, Pánská pasáž - Na Příkopě 23 - P-1, Panská 1/892 P-1

В этом году кооператив художественного производства „Гранат Турнов“ отмечает 60 - летнюю традицию производства украшений с чешскими гранатами в г. Турнове и в Чешской Республике. „Гранат Турнов“ в настоящее время является самым большим производителем украшений с чешскими гранатами. Чешские гранаты известны во всем мире. Если вы желаете купить или просто увидеть различные драгоценные камни, посетите три наши магазины в самом центре Праги.



## PALLADIUM

Náměstí Republiky 1079/1a  
Prague - Nové město  
Phone: +420 225 770 250,  
[www.palladiumpraha.cz](http://www.palladiumpraha.cz), [www.facebook.com/palladiumpraha.cz](http://www.facebook.com/palladiumpraha.cz)

Palladium is a modern shopping center with a widest range of stores, restaurants and services within the historical part of Prague. In five floors, visitors can find almost 180 stores, 20 restaurants, coffee bars and bars and in the ground floor, almost 900 parking places. A sensitive combination of historical features with a modern architecture creates a unique atmosphere, which makes from shopping a real experience.



## OUTLET USA

Revoluční 30, Prague 1  
Phone: +420 608 253 981  
[www.Outlet-usa.com](http://www.Outlet-usa.com)

If you come into Prague not just for delights, but as well for shopping, then visit Outlet USA, especially if you are lovers of designer clothing. Only with many difficulties, you'll find a better shop in Prague with brands as Ralph Lauren, Tommy Hilfiger, Ed Gardy, Guess, Abercrombie & Fitch, Nautica, Roxy or Billabong or Calvin Klein and all of this just in one place and for very reasonable prices.





## LONDON CALLING

Selfertova 20, Prague 3  
Phone: +420 604 566 572

The original Žižkov secondhand outlet focusing on models from London. Sea of interesting men's shirts (usually with movie themes or similar treat for lovers of stylish clothing), women's tops, dresses and lots of other things (books, comic books and CDs) from the city over the Thames. All at great prices. If you have weakness for the British style, or you want to buy something "little different", London Calling will be your favorite place to buy.



## CENTRUM ČERNÝ MOST

Chlumecká 765/6, 198 19 Prague 9  
Phone.: +420 281 918 100  
[www.centrumcernymost.cz](http://www.centrumcernymost.cz)

New shopping center Černý Most is recognized as the most modern commercial shopping center in the Czech Republic. And it's not just a hype. This project was designed by leading British architects Benoy Company which is with its sophisticated and unique designs known throughout the world. The result is a truly amazing shopping center that is inspired by its airiness like in U.S. commercial malls.

# TRANSPORT TO THE AIRPORT

**PRAGUE AIRPORT TRANSFERS**  
*feel the difference®* S. R. O.



### TAXI

**PRIVATE TRANSPORT**

max. 4 persons **CZK 550 (€ 21)**

### MINIVAN

**PRIVATE TRANSPORT**

max. 8 persons **CZK 780 (€ 30)**

### SHUTTLE

**SHARED DOOR-TO-DOOR**

1 person **CZK 290 (€ 11)**

2 persons **CZK 450 (€ 17)**



Call us on freephone **800 870 888** or **+420 222 554 211**,  
email us at [info@prague.co.uk](mailto:info@prague.co.uk) or book online at our website

**WWW.PRAGUE-AIRPORT-TRANSFERS.CO.UK**

**SERVICE****Alimex ČR**

It offers car delivery to anywhere in Prague within 30 minutes, and delivery to anywhere in the Czech Republic within 90 minutes, or with rentals exceeding 10 days, for free. Seven hundred cars in various categories are at your disposition. Operating leases are also an option.

**Rate: 300–1500 CZK/day**  
**Aviatická 1048, Prague-Ruzyně**  
**Phone: 220 114 860, [www.alimex.eu](http://www.alimex.eu)**

**A-Rent Car**

Discount rates are provided for medium and long-term rentals. Immediate vehicle replacement in the case of a breakdown or accident is guaranteed. The rented vehicle may be returned to any of the rental locations at no extra charge.

**Rate: 1300–4415 CZK/day**  
**V Celnici 10, Prague 1**  
**Phone: +420 224 211 587**  
**[www.arentcar.cz](http://www.arentcar.cz)**  
**Opening Hours: Mon–Sun 07:00–19:00**

**JS-car**

Vehicles, mainly Skoda cars, are available for rent. Unlimited mileage is given on all rentals. 30% is added onto the rental fee for one-day rentals. Special offers for certain cars are provided for customers.

**Rate: 560–2100 CZK/day**  
**Psohlavců 1360, Prague 4**  
**Phone: + 420 602 216 415**  
**[www.iautopujcovna.cz](http://www.iautopujcovna.cz)**  
**Opening Hours: Mon–Sun 08:30–17:00**

**Car Rental Prague**

Car rental in the centre of Prague great prices a wide selection of cars Škoda and high class cars with automatic transmission VW Passat, Chevrolet... (station wagon, diesel motors). Car accessories children's car seat, ski racks, navigation. Car delivery to Prague airport Vaclav Havel, Hotel or in office near station metro Dejvicka line A.

**Svatovitská 7, Prague 6**  
**Phone: +420 602 722 501**  
**+420 224 314 361**  
**[www.carrental.cz](http://www.carrental.cz)**  
**[www.carrentalprague.com](http://www.carrentalprague.com)**

**Avis**

Approximately 5000 vehicles are at your disposal. The selection is conveniently divided according to the category of vehicles. Avis offers to arrange returning the car to other European countries than the Czech Republic.

**Rate: 35–132 Euro/day**  
**Klimentská 46, Prague 1**  
**Phone: 221 851 225**  
**[www.avis.cz](http://www.avis.cz)**  
**Opening Hours: Mon–Fri 08:00–16:30**

## Pražská informační služba

The Prague Information Service is a network of information centers in Prague. It offers tourist information and services. The branches located in the centre offer GPS rental. Service is available in English only.

**Rytířská 31, Prague 1, [www.praguewelcome.cz](http://www.praguewelcome.cz), Opening Hours: Mon–Sat 09:00–19:00.**

**Staroměstské nám. 1, Prague 1, [www.praguewelcome.cz](http://www.praguewelcome.cz), Opening Hours: Mon–Sat 09:00–20:00, Sun 10:00–19:00**

**Mostecká tower, Prague 1, [www.praguewelcome.cz](http://www.praguewelcome.cz), Opening Hours: Mon–Sun 10:00–18:00**

## RENT-A-CAR

## RUNWELL

- > New cars with A/T, M/T
- > Office and the parking place in the center of Prague
- > All included
- > Season discounts up to 15%
- > Online reservation discounts
- > Free GPS
- > Wi-Fi on the board
- > 24/7 emergency service in English, Russian, Czech languages

### WEEKEND TARIFF

Czech DINNER  
for free\*

+ 420 728 500 100

[www.runwellrentacar.com](http://www.runwellrentacar.com)  
[facebook.com/runwellrentacar](https://facebook.com/runwellrentacar)

\* Rent a car in Prague for more than 4 days

## ticket sales

### Ticketpro

**Prague Tourist Center – Rytířská 404/12, Prague 1. Opening Hours: Mon–Fri 09:00–19:00, Sat–Sun 12:00–19:00**

**Ticketpro Rokoko – Václavské náměstí 38, Prague 1. Opening Hours: Mon–Fri 11:00–19:00**

**Pražská informační služba – Rytířská 31, Prague 1. Opening Hours: Mon–Sat 09:00–19:00 – Staroměstská radnice, Prague 1. Opening Hours: Mon–Sat 09:00–20:00, Sun 10:00–19:00**

**Bohemia Ticket – Na Příkopě 856/16, Prague 1. Opening Hours: Mon–Fri 10:00–19:00, Sat 10:00–17:00, Sun 10:00–15:00. [www.ticketpro.cz](http://www.ticketpro.cz).**

### Ticketportal

**Via Musica – Malostranské náměstí 13, Prague 1. Opening Hours: Mon–Sun 10:30–18:00**

**Lucerna music Bar – Vodičkova 36, Prague 1. Opening Hours: Mon–Fri 10:00–13:00; 14:00–18:00**

**Divadlo Hybernía – Náměstí Republiky 4, Prague 1. Opening Hours: Mon–Sat 11:00–19:00**

**Roxy – Dlouhá 33, Prague 1. Opening Hours: Mon–Fri 10:00–18:00. [www.ticketportal.cz](http://www.ticketportal.cz).**



## taxis

### Cedaz Praha

Public shuttle bus from airport to the centre of Prague or back. Comfortable and direct transport from V Celnici street. Tickets can be bought directly from the driver.

**Phone: +420 220 116 758**  
**www.cedaz.cz**

### Taxi Praha

Taxi Praha offer the possibility of calling a taxi on-line. The fare can be calculated on the website. Trips are monitored by GPS for the customer's safety. Rate: without dispatcher 28 CZK/km in Prague, via dispatcher 24 CZK/km in Prague

**Vrchlického 9, Prague 5**  
**Phone: + 420 222 111 000**  
**www.taxi-praha.cz**

### AAA Taxi

The customers are offered individual way of transport, which provides privacy, comfort and safety. AAA Taxi belongs to the cheapest ones in whole Prague. Rate: from 16.90 CZK/km in Prague

**Phone: +420 222 333 222**  
**www.aaataxi.cz**

### Speed Cars

In spite of being a relatively new company on the market, Speed Cars have sparked great interest among customers. They provide an online fare calculator, as well as car pick-up. Rate: 19 CZK/km in Prague.

**Pacholíkova 4, Prague 2**  
**Phone: 224 234 234**  
**www.speedcars.cz**

# PRAGUE TAXI SERVICE



**Call our cheapest taxi in Prague. Price: CZK 16,90,-/km**

*Prague taxi service with more than 22 years of transportation experience in Prague, the Czech Republic, and Europe*

**+420 222 333 222 +420 729 33 11 33**

Watch how we fetch you. Download an app to a phone that runs on Android and order a taxi for a reasonable price.

**Nonstop service • We speak English**  
**Free pickup service in Prague**  
**Approximate price calculation**  
**More than 1200 cars available**  
**Credit cards welcome**  
**[www.aaataxi.cz](http://www.aaataxi.cz)**



## REGULAR SHUTTLE BUS • AIRPORT ↔ CITY CENTRE



**COMFORTABLE AND DIRECT  
TRANSPORT FROM PRAGUE AIRPORT  
TO THE CITY CENTRE OR BACK**

**Airport bus stop – Arrival Terminals  
T1 exit F or T2 exit E**

**Bus stop – CITY CENTRE  
V CELNÍCI Street**

**• NEXT TO METRO LINE B •  
• 40 METRES FROM NÁMĚSTÍ REPUBLIKY •**

**TICKETS CAN BE BOUGHT  
DIRECTLY FROM THE DRIVER**

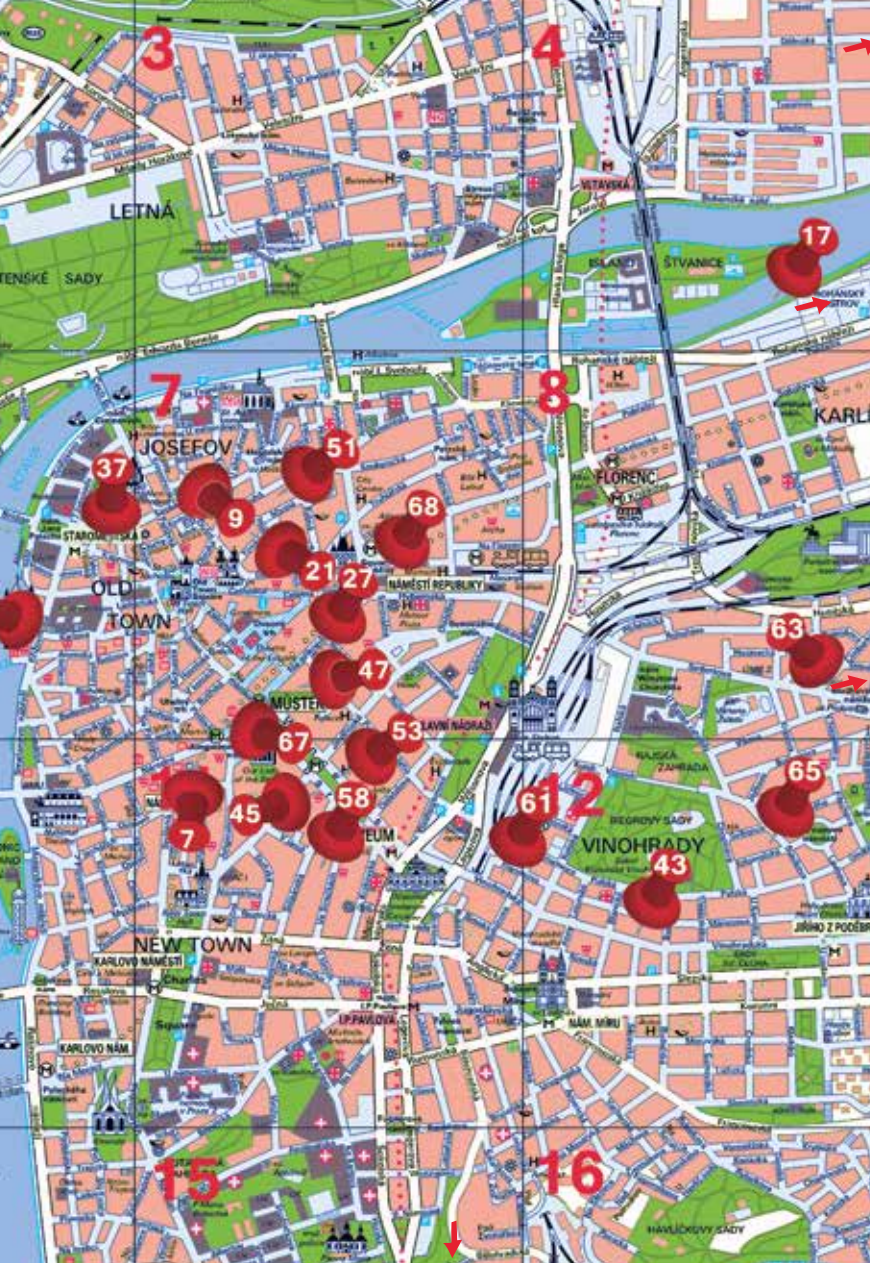
**[www.cedaz.cz](http://www.cedaz.cz)**



- 5 CITY GALLERY PRAGUE
- 7 CAFÉ LOUVRE
- 9 GALERIE LA FEMME
- 17 GO-KART
- 21 CAT'S GALLERY
- 27 SHOOPS GRANÁT
- 37 NAM - JAI
- 45 RESTAURANT VÝTOPNA
- 47 SUSHI SAKURA
- 51 HARLEY'S MUSIC BAR
- 53 RESTAURANT U BALOUNA
- 57 DARLING
- 59 RELAX MASSAGES
- 61 NEON CLUB
- 63 EXTASY KABARET
- 65 EGYPTIAN MASSAGES
- 67 BATALION
- 68 FASHION RESTAURANT

PAGE  
NUMBER







## HOTEL TIPS

# Sleeping Beauty

**G**ood sleep is the basic. Specifies the energy for the next day, the quality of work performance, mood, it is a driving motor. And it is important to know how this "obligation" to use perfectly as a third of life you spend sleeping. It is the same with the holiday.

If you really want to enjoy the relax, you need the best sleep comfort. Prague offers countless places where you can lay your head well.

Therefore, we bring you an exclusive hotel tips, which you definitely will not regret. Excellent service is guaranteed, you will sleep like you have never slept before. It's guaran-

teed by five out of five Sleeping Beauties. We wish you a pleasant time spent and enjoy the city. It is worth it!

*th*



PLAZA ALTA HOTEL

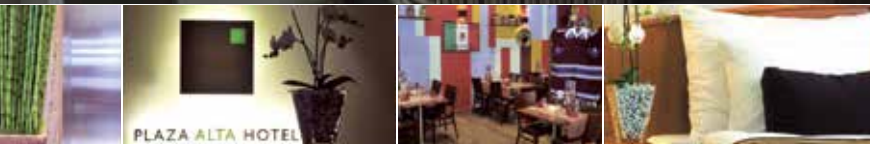


★ ★ ★ ★

Plaza Alta Hotel & Eco-Friendly Hotel



A unique combination of comfort and affordability / 87 comfortable and fully air-conditioned rooms / Mexican Restaurant 7 Tacos Steak & Grill / Meeting room / Fitness room / Free Wi-Fi / 10 min. to the centre of Prague / 5 min. to the Holešovice Fairground



Ortenovo nám. 22, Prague 7, Czech Republic, +420 220 407 011, [booking@plazahotelalta.com](mailto:booking@plazahotelalta.com)

[www.plazahotelalta.com](http://www.plazahotelalta.com)

# TRADITIONAL THAI MASSAGE



*Namjai*



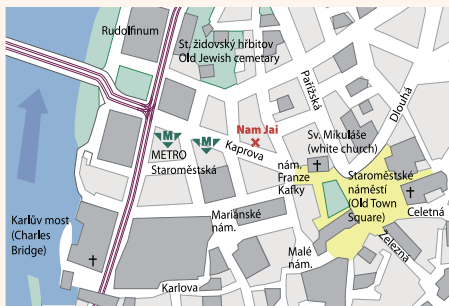
**1/2 minute from Old Town Square**

## Show this ad and get:

**60 MIN. THAI OR FOOT MASSAGE** for 599Kč / €22

**60 MIN. THAI OIL MASSAGE** for 699Kč / €26

**30 MIN. FOOT MASSAGE** for 349Kč / €13



### WE ACCEPT:

**Visa, MasterCard, American Express, USD and Euro**

**Namjai Thai Massage  
Kaprova 11**

**110 00 Praha 1, Josefov  
Open Daily from  
10:00 - 22:00 h**

t: 222 328 747,

m: 724 595 314

e: [info@namjai.cz](mailto:info@namjai.cz)

**WWW.NAMJAI.CZ**



## Into the Wild!

Czech Republic receives many attributes that are, whether more or less accurately, characterizing it. We can't be proud of all, but in the other hand some we take with smile and a nod. But the claim that the Czech Republic is a fairy-land of castles we accept with pride and perfect consent. And because such kind of place is the ideal target of summer trip, several of them can be found in our hot picks! We wish you a pleasant journey...



## KARLŠTEJN

[www.hradkarlstejn.cz](http://www.hradkarlstejn.cz)

Karlštejn Castle, a Gothic landmark on the south-west of Prague, established in 1348 by Karel IV., to keep precious crown jewels. It's not the only attraction of the popular Castle. The first guided tour includes space Imperial Palace and you can even see the Treasury in the Marian tower. The second circuit will then lead to the Great Tower with its famous chapel with panel paintings by Master Theodor. Around the castle there are many restaurants and places to stay, making it ideal for Karlštejn on the weekend.

## LITOMĚŘICE – GEM OF THE CZECH CENTRAL MOUNTAINS

[www.litomerice-info.cz](http://www.litomerice-info.cz)

The city is beautifully situated at the confluence of the Elbe and Eger. The region is known for its wine and cultural monuments. In the center of the town you can find countless objects, which are registered in the national list of cultural monuments, located in the historical city center. A typical town houses at the square are dominated by the imposing building of the former Old Town Hall, now a museum of Litoměřice. Take an advantage of guided tours of the city. Famous underground factory Richard and Castle Litoměřice, where wine tastings are hosted, are worth a visit. Litoměřice are easy accessible from the motorway D8.







## PARTY GRILL BOAT

Rašínovo nábřeží, Prague 2  
Phone: +420 731 025 250  
[www.party-grill-boat.cz](http://www.party-grill-boat.cz)

Summer days directly urge to walk along the picturesque embankment of the Vltava River. A few steps from Palacký Bridge there is located Boat Party Grill, where you can rent boats in the unique shape of donuts. Circular seating ensures that none of the assessors will feel left out. There is a grill in the middle of the boat grill and lot of drink supplies. Under the seat is ample space for all kinds of drinks. Who would not be interested in grill plastic vessel can be placed instead for ice for cocktail parties or beer celebration. The vessel can be rented with an experienced steward, who will prepare grilled delicacies to taste and keeps an eye on fullness of your glasses and traffic on the River Vltava.

## MERCURIA LASER GAME

Argentinská 38, Prague 7 – Holešovice,  
Phone: +420 605 111 811  
[www.mercurialaser.cz](http://www.mercurialaser.cz)

Mercuria Laser Game is the new and largest laser game arena in Prague, located just 3 minutes walk from the underground station Nádraží Holešovice. In this unique laser game you can enjoy an arena larger than 400 square meters. During the game you can listen to music from the cult movie Mortal Combat. You will really enjoy the victory. The winner gets a big Kofola or free beer for his invincibility. Both can be used in a wide space bar with more than 60 seats. In addition to the laser game, you can choose different form of entertainment: table football, darts or children favorite arcade games (motorcycles, cars and House of Dead.)



## CRYPTEX

Kořenského 1054/3, Prague 5  
Phone: +420 774 110 782  
[www.cryptex.cz](http://www.cryptex.cz)



Cryptex is a real life escape game, a one of a kind attraction in Prague. You can always go to a bar for a drink, but if you want to experience something new something different with your friends you should visit us. Come and hunt for the treasure of a wealthy businessman, who was forced to flee the city. Or try to deactivate a bomb, what is aimed to eliminate a feared mob boss. Whatever you choose we guarantee that you and your friends are going to have a unique experience. Please check online or trough the phone in advance for availability.



## CZECH THE LIGHT

Light art will illuminate Český Krumlov from September 5 - 6 as part of a series of cultural events known as Czech the Light. The streets of the town and the UNESCO monuments will be enlivened by light installations, videomapping on iconic objects and even by a workshop entitled "Painting with Light". Visitors will be able to see the Uranium Figure light sculpture or the MRAK interactive light bulbs. There will also be no shortage of accompanying events, which will include the season finale of the rotating stage.



## KARLOVSKÝ GASTROFESTIVAL IN VELKÉ KARLOVCE

You can try out true Wallachian cuisine and its specialties this year in Velké Karlovice from October 3 to 5. Traditional cuisine bearing the names halušky, frgál, sli-vovice and kyselice, to name but a few, and delicacies from abroad will be presented as part of Gastro Tour, along with an international farmers' market. Visitors should not miss the Michelin Gala Dinner, where famous chefs will show off their talents.

**Czech**Tourism



## TOURFILM

You can look forward to interesting films from around the world in Karlovy Vary from October 9 to 11. Morocco – the pearl of the Arab world – will be the focus of the 47th annual festival of films devoted to tourism, the oldest festival of its kind in the world. Well known filmmakers, whose work is aimed at developing domestic and foreign tourism, will present their films in the spa town.



## MEET CZECH DESIGN

You will have the chance to marvel at the best of Czech design from September 8 to October 19 in Prague, where the Meet Czech Design project will be presented. It will include Designblok, which is a review of international design, and Fashion Week, during which fashion from around the world will be shown. For fans of Czech architecture, Meet Czech Design has prepared a festival of architectural art.



# BACK



# DOORS

MUSIC BAR

RESTAURANT

Space for Your Senses.

Na Bělidle 310/30, Praha 5, Smíchov  
+420 257 315 824, [www.backdoors.cz](http://www.backdoors.cz)



**5x in Prague**

**Veleslavínova 3**  
Praha 1

**Háfkova 6**  
Praha 2

**Nádražní 7**  
Praha 5

**Čs. armády 22**  
Praha 6

**Křižíkova 28**  
Praha 8



## TAP YOUR OWN PILSNER



Restaurant & Bar

[www.thepub.cz](http://www.thepub.cz)

# U TÝNA restaurant & café



**R**estaurant & Café u Týna is one of the most classic restaurants in Prague, which belongs in the city as well as the Old Town Square itself, where it is located. But why should we choose this restaurant as one of the stops?

Because here you really get what you couldn't elsewhere. We begin with traditionally boiled Czech beer from Rakovník, which is one of the few independent industrial breweries in the country. Boil it in beer conventional technology – double mash way. Beer is fermented in open vats and lies in 40-60 days in horizontal tanks, and for its production is used just exclusively Czech and the highest quality ingredients, namely Czech malts, Žatec hops and water from our own deep wells. So if you have to taste authentic Czech beer, it should be at U Týna. But the popular golden drink is not the only thing with which the company can boast.

Restaurant U Týna is located in a quiet area of the Old Town Square, the historic house at the White Unicorn and invites

you to relax. You can use either the very modest premises of the restaurant alone, which can accommodate circa 20 people (people who don't like crowded restaurants should be happy), or a large garden with stunning view over the square.

Varied menu, including breakfast menu through range of traditional meals as well as the world's best cuisine to a wide range of drinks, will absolutely amaze you. Who wants to taste Czech food, but is afraid of its "hardship" (Czech cuisine is everything possible but not easy to digest), will be excited from the gastronomy U Týna. It keeps the classic recipes but at the same time is trying (in a good way) to modernize it.

The restaurant prides itself on quality ingredients, suitable food processing and high quality. Quite exceptional is the owners' attitude to vegetables, which are served to every single meal. Vegetables as well as fruits, herbs, milk and dairy products used in this restaurant, comes from their own garden and farm production. Clean environment of protected landscape area, cultivation without chemistry and friendly approach is expressed in every meal. It should be standard but there are still

(unfortunately) a lot of places that would rather bet on wholesale chain products whose quality is not always the best one.

As for the raw materials which U Týna don't have from own production, the priority is always to have the same attitude to good and the customer. That's the way it should be. Because Café is in its name, there can't be missing a wide range of delicious coffee drinks in the menu. For the coffee itself the owners prefer purchase so-called Fair Trade (fair trade that gives farmers in developing countries a chance to escape from poverty and misery).

You should definitely taste the roasted smoked pork knuckle served on a cutting board without bones (this means that you will get a really honest piece of meat for your money). We should mention a sweet spot in terms of domestic white yogurt from their farms with fruits and honey, wide range of pasta dishes or vegetarian dishes (buckwheat porridge with mushrooms, Ratatouille (fresh vegetables in olive oil).

Restaurant & Café U Týna shouldn't be missed during your journey at the Old Town Square. As the only one in the heart of Prague can offer you unique beer and dishes from their own raw materials. As a bonus you can get "a cold one" for free. Just use the coupon printed below.



Staroměstské nám. 15/603  
Prague 1

Phone: +420 604 738 428

E-mail:  
moravecmail@gmail.com

www.restaurantutyna.cz

th.

**1 pivo zdarma**

k hlavnímu jídlu (kupon předložte při objednávání)

**1 free beer**

to the main course (show the coupon when ordering)

**1 бесплатное пиво**

к основному блюду (предъявите купон при заказе)



**U TÝNA**  
restaurant  
& café





## NA BAŠTĚ

Letenské sady 1574  
Prague 7 - Holešovice  
Phone: +420 777 244 459  
[www.obcerstveninabaste.com](http://www.obcerstveninabaste.com)

Restaurant Na Baště is located in close proximity of the largest and most popular playground roughly in the middle of Letná with good accessibility from all direction. Letenské sady (Park Letná) is a beautiful place for walks throughout the year. At the restaurant na Baště you can relax your feet, enjoy good food, wi-fi and an outdoor bar for mixed drinks. Count on grilling in the summer time!



## GEORGE AND DRAGON

Staroměstské náměstí 11, Prague 1  
Phone: +420 222 326 137  
[www.georgeanddragonprague.com](http://www.georgeanddragonprague.com)

George and Dragon was founded in September 2003. Since then this bar became very popular between both foreign and local visitors. Many of them appreciate English-speaking staff, live music and a wide variety of drinks you won't find anywhere else in Prague. The menu contains traditional English breakfast, Steak pie, Shepherd's pie, Fisherhman's pie, chicken or beef burger, Traditional Fish and Chips and other famous English recipes. You can also choose from several salads..



## CHAPADLO

Nuselská 44, Prague 4  
Phone: +420 241 404 337  
[www.chapadlo.com](http://www.chapadlo.com)

The restaurant Chapadlo in Nusle features a complex modern concept. Modern gastronomy goes hand by hand with well-sophisticated interior with clean lines and natural elements. Here are special offers of food prepared every month. You can find there even a 400g steaks. You can also use the offer of lunch menu. Drink arsenal in restaurant Chapadlo is filled with a wide offer of beers from Pilsner brewery and wines from the whole world.



## SULTÁN

U Milosrdných 848/4, Prague 1  
Phone: +420 728 213 929  
[www.khorshid.cz](http://www.khorshid.cz)

Lebanese cuisine with French cuisine belongs to the finest in the world. If you have not had a chance to try its delights, you wouldn't have missed the Sultan restaurant, which offer has the best Lebanese specialties. The distinctive interiors that reflect Lebanese culture, and during dance evenings, you can enjoy bursting and lively atmosphere of the Orient and in addition to delicious food you can relax with tea or water pipes.



## Výtopna - unikátní zážitková restaurace

Originální gastronomický koncept, který obsluhuje hosty prostřednictvím modelové železnice.  
The unique gastronomic concept - guests are served by a model railway.



[www.vytopna.cz](http://www.vytopna.cz)

Výtopna Praha | Václavské nám. 56 (Palác Fénix) | Praha 1 | tel.: +420 725 190 646

Výtopna Brno | Starobrněnská 12 | Brno-střed | tel.: +420 725 406 895

Výtopna Brno | Hlinky 34 | Brno-střed | tel.: +420 776 080 501

Výtopna Orlová | 17. listopadu 427 | Brno-střed | tel.: +420 725 190 650



M6

## BARÁČNICKÁ RYCHTA

Tržiště 23/555, Prague 1  
Phone: +420 257532461  
[www.baracnickarychta.cz](http://www.baracnickarychta.cz)

This place has always been the meeting place of people in various cultural events such as concerts of various genres, dance nights, cabarets and much more. You would hardly find a saloon like this in Prague. It seems as if time has stopped. Its unique atmosphere and location will conquer you as well as excellent traditional Czech cuisine, delicious beer and friendly staff. If you don't select from the rich program, you can select "Baráčnická rychta" for private or corporate events.



M7

## DYNAMO

Pštrossova 220/29, Prague 1  
Phone: +420 224 932 020  
[www.dynamorestaurace.cz](http://www.dynamorestaurace.cz)

If you are in the center of Prague and give on a nice impression, visit the restaurant Dynamo. In 1999 was awarded for its interior design, created by Olgoj Chorchoj and Ales Najbrt. Currently it has been changed by the fa Lavmi Babette Ondrová. The restaurant offers specialties of European cuisine and believe us, you will enjoy it. You can also be surprised by a large selection of wines from Moravia and all over the world. Enjoy your meal and have a great experience!



M8

## SKLEPENÍ

Husitská 63, Prague 3  
Phone: +420 222 222 332  
[www.sklepeni.cz](http://www.sklepeni.cz)

The warranty of nice dining experience, friendly staff and comfortable seating. All this awaits you in an interestingly made cellar space of Žizkov restaurant Sklepení. Lovers of good steak, sweet foodies yearning for something lighter or beer lovers who just want to bite something to their favorite beer, they all come here to make their wishes come true. The restaurant is divided into smoking and non-smoking area and a lounge for private events, accommodating up to 30 people.



M6

## U PIVRŇCE

Maiselova 3, Prague 1  
Phone: +420 222 329 404  
[www.upivrnice.cz](http://www.upivrnice.cz)

If a real Czech tavern is what you're after, you must be sure to check out the traditional pub U Pivrnice. One of the pub's most eye-catching elements are the comical hand-drawn pictures on the walls, featuring motifs of the legendary bar fly, Rudy Pivrnice. At U Pivrnice, good beer is usually served with traditional Czech specialties as well as (Try the Pivrnec guláš, a local dish which is best coupled with Pilsner Urquell, Gambrinus or Kozel). If you aren't too partial to beer, choose from a wide selection drinks.



# U Básníka pánve

**The restaurant U Básníka Pánve is a place known to all lovers of the royal food and good wine.**

The restaurant U Básníka Pánve has prepared a new menu from the royal court, a brand new selection of wines, you can choose from 60 kinds, which will be served by a new experienced sommelier, chef de rang Kutenbereg.

Our specialization is international and Czech cuisine, especially DUCKS, GOOSE, PORK KNEES and RIBS are valued as local favorites for their unique flavor, which is created by own recipe of Jack Daniel's sauce.

**Restaurant and Wine Bar - U Básníka pánve**  
 Mánesova 62 (entrance from Třebízského street),  
 Praha 2 Královské Vinohrady  
 phone: +420 222 250 072  
[www.ubasnikapanve.cz](http://www.ubasnikapanve.cz)

## Pizzeria KMOTRA



If you want a really good pizza prepared from high-quality ingredients or fresh home-made pasta, Pizzeria Kmotra is the right choice for you. This pizzeria is proud of its reputation because it's the oldest pizzeria in Prague and from its earliest days it has emphasized both the quality and freshness of the ingredients used and the reasonable prices. The restaurant has separate areas for smokers and non-smokers and a private room for 35 guests. There are ISIC card-holder discounts and home-delivery is also available (see our website for current offers). As well as beer and spirits, you can choose traditional Italian wines or selected quality Czech wines.

V Jirchářích 12, Praha 1, Phone: 224 934 100, [www.kmotra.cz](http://www.kmotra.cz)  
 LUNCH MENU 115-150 Kč





M3

## CAFFE PER LEI

Karlova 154/17 Prague  
Phone: +420 775 062 243  
Opening hours: 10-22h

This famous café is located in the heart of old Prague center on the royal route. You can be pleased by stylish and comfortable interior, excellent international cuisine, delicious cakes and excellent Italian coffee brand Tonino Lamborghini. For your convenience you can find also Wi-Fi connection. We confirm the excellent and courteous service.



M7

## CAFE U FÍLŮ

Klientská 2, Prague 1  
Phone: +420 603 824 861  
[www.cafeufilu.cz](http://www.cafeufilu.cz)

Café u Filů is a quiet restaurant with imaginative Czech cuisine in the center of the Prater, accessible from the underground station Náměstí Republiky. It has very cozy interior with a family atmosphere, which is reflected on the honest and kind service. The capacity is 30 persons. Beer lovers will appreciate the Pilsner Urquell, black beer Kozel, wheat beer FENIX and a lot of beer delicacies. Café u Filů is suitable for people who love good food and homely atmosphere.



M8

## CAFÉ VÍTKOV

U památníku 1900, Praha/Prague 3  
Open: Wednesday - Sunday 10- 18  
(M): Křižikova Metro (774 m)

If you decided to visit the National Memorial on Vítkov, it's almost natural to visit Café Vítkov. Very modern interior and friendly prices will delightfully surprise you. There is also a cozy sitting in the garden with a great view of the city. Besides, they held exhibitions, debuts of books, cultural events, concerts and much more. In the case of event it's possible to extend the opening hours.



M11

## DOBRÁ ČAJOVNA

Wenceslas Square 14, Prague 1  
Phone: +420 224 231 480  
[www.tea.cz](http://www.tea.cz)

Dobrá čajovna was opened on 1993 as the first teahouse in Czech Republic and in the post-revolutionary period immediately attracted attention to itself. During the following years, Czech Republic became a country with the biggest concentration of tea shops in the world. Visit the unique space of this Mother of Teahouses, the place where it all started and in a pleasant environment do try some of the finest tea that has directly arrived from all the four corners of the tea world.





**SAKURA RESTAURANT**  
SUSHI BAR • JAPANESE CUISINE  
® ORIENTAL FOODFARE

Přijďte si pochutnat nejen na skvělém SUSHI ...



**SAKURA GARDEN ČERNÁ RŮŽE**

Na příkopě 12 Praha 1  
tel.: 775 725 872



[www.sakuracr.cz](http://www.sakuracr.cz)

## HEMINGWAY BAR

Karolíny Světlé 26, Prague 1  
Phone: +420 773 974 764  
[www.hemingwaybar.cz](http://www.hemingwaybar.cz)



The bar inspired by legendary American author and journalist Ernest Hemingway, as one of the most famous bar lovers, who made famous many cocktails. He innovated known recipes himself and therefore the world today knows his bar cocktails as Hemingway Daiquiri or Papa Doble version. Hemingway bar also includes its favorite spirits. Absinthe, Rum and Champagne. The domain of Hemingway bar are first class cocktails prepared exclusively from premium and ultra-premium products and fresh fruit juices. You need to visit this place.

## ON A WAVE OF 30'S IN BLACK ANGELS BAR

Staroměstské náměstí 29, Prague 1  
Phone: +420 224 213 807  
[www.blackangelsbar.cz](http://www.blackangelsbar.cz)

Do you want to start step by step in more cultivated space, where you can really enjoy drinks and at the same time, you will get into absolutely unique environment? Then Black Angels Bar, which is built in a style of prohibition businesses of 30's, would not miss your attention. A really various menu of drinks waits for you, cocktails made of fresh fruit, a wide selection of wines, from eight p.m. a live music on piano and many drink specialties (definitely try „ice balls“). The bar quality is also confirmed by a fact that every year it is chosen by experts from foreign countries to the list of those the best bars, which you can find in whole Europe.



## CAFÉ, COCKTAIL BAR & LOUNGE PARC FERME

Vodárny 1226/6, Prague 3  
Phone: +420 222 516 097  
[www.parcferme.cz](http://www.parcferme.cz)

Stylish café, cocktail bar and lounge – Parc Fermé is just few steps away from the dominant of Královské Vinohrady – Vinohradská vodárna. In the original and cozy interior you can enjoy first class coffee – La Genovese which recently won a gold medal at prestigious international competition International Coffee Tasting 2012. In addition to the classic assortment of alcoholic and non-alcoholic beverages (we recommend cucumber lemonade) or mixed drinks, you can also enjoy a range of exclusive drinks. Of course there is a possibility of reservation for private celebrations, parties and presentations.



**Harley's Bar presents:**

**Party You will not Forget**

**Music, that makes You Move**

**Barstaff & Drinks, that will Rock You**

**Atmosphere You will remember**

**And if You Party Well, You Will See Hell of a Bar Show!**



**Dlouhá 18, Praha 1**

**Tel. +420 602 419 111 / [harleys@harleys.cz](mailto:harleys@harleys.cz)**



## CLUBS &amp; BARS TIPS



## FASHION CLUB

Náměstí Republiky 8, Prague 1  
Phone: +420 224 815 733, 774 138 803  
[www.f-club.cz](http://www.f-club.cz)

Fashion Club has set a new level in Prague nightlife by going back to basics: impeccable service, combination of high class kitchen, signature cocktails, the best DJs, stunning decor and lighting. All the beautiful people, fashionistas, and happy fews from NYC to Moscow want to discover the magical world of Fashiontv. The Fashiontv parties & events are now one of the most famous labeled parties in the world. Fashion Club is combination of luxurious club & fine dining italian restaurant.



## ALOHA BAR

Dušní 31, Prague 1  
Phone: +420 602 251 392  
[www.alohapraha.cz](http://www.alohapraha.cz)

Anyone, who likes the exotic environment, definitely shouldn't miss Aloha Music Club & Cocktail Bar. A unique music club and bar, located just "five minute walk" away from the Můstek underground station and the Old Town Square, is one of the most exciting bars in Prague: style of Hawaiian Islands, great drinks and thematic events overflowing with popular island's atmosphere.



## BARÁČNICKÁ RYCHTA

Tržiště 23/555, Prague 1  
Phone: +420 257 532 461  
[www.baracnickarychta.cz](http://www.baracnickarychta.cz)

This place has always been the meeting place of people in various cultural events such as concerts of various genres, dance nights, theater of small scenes, cabarets and much more. You would hardly find a saloon like this in Prague. It seems as if time has stopped. Its unique atmosphere and location will conquer you as well as excellent traditional Czech cuisine, delicious beer and friendly staff. If you don't select from the rich program, you can select "Baráčnická rychta" for private or corporate events.



## HANGAR BAR

Dušní 9/9, Prague 1  
Phone: +420 724 004 305, 602 251 392  
[www.hangarpraha.cz](http://www.hangarpraha.cz)

Do you want to enjoy the fire show full of adrenaline, excitement and sexy dance with the beautiful flight attendants in a unique environment in unique spaces that are using the legendary airlines Pan Am? With the Hangar bar you can't make a mistake. Relatively young club has style, excellent gastronomy, a wide range of drinks, handsome bartenders/pilots and waitresses/flight attendants.





Приветствуем Вас в ресторане У Балоуна / Welcome to the restaurant U Balouna  
РТрадиционный чешский ресторан «У Балоуна» находится в нижней части  
Вацлавской площади, д. 20. Из обширного меню вы можете выбрать  
традиционные чешские блюда, оригинальные фирменные блюда из  
мяса или просто закусить какой-нибудь вкуснятиной и запить ее легким  
пльзенским пивком. **Вацлавская площадь. 20, тел: +420 224 228 388**  
Old-time Czech restaurant is located in the lower part of Wenceslas Square,  
house number 20. A diverse menu offers traditional czech meals, interesting meat  
specialties or just a delicious appetizer to be washed away by mouthwatering Pil-  
sen beer worth of kings. **Wenceslas Square. 20, Phone.: +420 224 228 388**  
[www.ubalouna.cz](http://www.ubalouna.cz)



## WHERE TO PLAY



## AMBASSADOR CASINO

Václavské nám. 5, Prague 1  
 Phone: +420 224 19 36 81  
[www.vipclub.cz](http://www.vipclub.cz), Open 24 hours

Since 1992, Casino Ambassador has been one of the best casinos in Prague. In 2002 the casino underwent reconstruction to improve and expand their services. Aside from slot machines, in Casino Ambassador you can have the chance to play "live" games at manned gaming tables such as: American roulette, Black Jack, Pontoon, and Oasis Poker. You can play with Czech Crowns or Euros right at the gaming tables, and exchange other foreign currencies at the casino's box office for casino chips. Additionally, one of the perks of VIP Club casinos is that entry is free of charge.



## CARD CASINO

Veletřní 20, Prague 7  
 Phone: 220 571 648  
[www.cardcasinoprague.cz](http://www.cardcasinoprague.cz)  
 Open 18.00-05.00

This casino is part of the four-star hotel Parkhotel. The original Parkhotel casino was completely reconstructed, and now offers visitors the utmost in comfort and luxury. Slot machines, gaming tables for American Roulette, and card games such as Black Jack, Pontoon, Texas Hold'em, Poker and Caribbean stud poker are all available for guests. With a minimum stake of only 25 crowns, guests can take the pressure off of playing to win, and enjoy the fun and excitement the casino has to offer.



## CASINO HENRY

Václavské nám. 45, Prague 1  
 Phone: +420 224 225 194  
[www.casinoaleks.cz](http://www.casinoaleks.cz)

In 2006, Casino Henry underwent major reconstruction, and today is one of the top ranking casinos in Prague. It is also a part of the five-star hotel Jalta. The local restaurant and bar offers a selection of Russian and Armenian dishes, as well as other international specialties. Here you can enjoy the pleasant atmosphere and top-notch service. Games available at the casino include: American Roulette, Black Jack, American Black Jack, Poker, Pontoon, Caribbean Poker, Punto Banco, and Texas Hold'em.



## CASINO PRESIDENT

Nám. Curieových 100 (President Hotel), Prague 1, Phone: 234 614 113  
[www.casinopresident.cz](http://www.casinopresident.cz), Open 18.00-04.00 Fri, Sat 18.00-05.00

A casino with a longstanding tradition, located along the Vltava River, right in the middle of historical Prague. President is a part of the five-star hotel President, which is located near Pařížská street along the Vltava River. The casino has been opened since 1992 and has always been among the most prestigious casinos in Prague. In a luxury environment you can choose from a broad scale of slot machines but above all from numerous tables offering live games: American Roulette, Blackjack, Ponton, Caribbean Poker or Texas Hold'em.



[www.catsgallery.com](http://www.catsgallery.com)

## **Cats Art and Trifles:**

Pottery - Enamel - Paintings  
Graphics - Pieces and statues  
Textile - Wood - Stones  
Magnets and many more!

---

**Týnská 9, Prague 1**



## SINFUL NIGHT LIFE OF PRAGUE CITY

**W**hy will be deluding ourselves. Every good capital, whose streets pulsate with life, must have beside restaurants, bars, cafes and shopping centers also (as the novelists say) the houses of love. And even Prague is no exception. But before we go into its streets, let's make a small historic revision.

It is no longer the rule that these places are for desperate individuals. Time progressed. You can forget the red neon lights, a company of doubtful quality and cheating customers. Although the movies are convincing us that the so-called night clubs are cheap sources of vice, many psychologists have the opposite view: the company struggles

with excessive shame and these clubs can be the right medicine.

When was the phenomenon of night clubs or prostitution itself actually born? Well, not for anything they say that it's the oldest profession of the world. It is probable that prostitution has evolved from religious belief and rituals which were held to celebrate the goddess of fertility in the Middle-Age. In the 19th century it was strongly developed and reached all segments of society from politics to high art (for example Vincent Van Gogh lived for years with a Flemish prostitute).



Even fifty years ago, half of the prostitutes were involuntary. This should already be over. The paradox is that there were previously only 10% of prostitutes educated; now the 50% of them are college students. This is an education reform!

We know that it's not easy to find the right company in which you can feel natural and comfortable. Indeed, there are lots of them and if you had to visit them all, it would cost you the whole wealth.

For this reason, we are showing few short "best of" tips in the following pages. We guarantee that you definitely won't be bored. The ride full of excitement and beautiful women is awaiting!

*ml.*



**Surprise your friends!**  
**We can prepare a stripper in your limo**



**EXTRAS**  
**Stripper:**  
CZK 2000 (€ 40)  
**Lesbian show:**  
CZK 4000 (€ 80)

**Hummer H200 (max. 20 pax) 1-hour rental: CZK 4 650 (€ 186)**

**Lincoln TC120 (max. 8 pax) 1-hour rental: CZK 1990 (€ 80)**

Call us on freephone **800 870 888** or **+420 222 554 211**,  
email us at [info@prague.co.uk](mailto:info@prague.co.uk) or book online at our website

**WWW.PRAGUE-AIRPORT-TRANSFERS.CO.UK**



100% BEST IN CZECH REPUBLIC

# DARLING®

★ CABARET PRAGUE ★ *fashion*



Klara  
Monika  
Lucka  
Veronika  
Claudie

EVERYDAY PROGRAM FROM OUR  
PROFESSIONAL BALLET PERFORMANCES

BOTTLE OF SPIRIT 1.990,-  
FROM ONLY

(BEEFATER GIN, ASSOLUT VODKA, CHIVAS REGAL, JACK DANIELS, ETC)

**HAPPY HOURS | DRINKS 50% OFF**

EVERYDAY UNTIL 22:00

FREE TRANSFER  
**+420 732 250 555**



THE  
ONLY PLACE  
IN PRAGUE  
WHERE IT ROCKS  
ON SUNDAY

**+350**  
other  
party  
**girls**

**EVERY WEDNESDAY**  
YOUNG HOSTESS PARTY  
**EVERY THURSDAY**  
THE SHOWTIME PARTY  
**EVERY SUNDAY**  
VAGINA SCULPTURE PARTY

**CENTRUM, VE SMEČKÁCH 32, PRAHA 1 | WWW.KABARET.CZ**





**NON-STOP  
RELAX ANGEL  
MASSAGES:**

# **TANTRA RELAX EROTIC**

**Adress: Nádražní 21, Prague 5  
(2.Floor)**

**Phone: +420 212 246 209**

**Mobile: +420 607 023 032**

**E-mail: relax-angel@seznam.cz**

**[WWW.MASSAGE-PRAGUE.COM](http://WWW.MASSAGE-PRAGUE.COM)**

**Young masseuses.**

**Sauna, jacuzzi.**

**Erotic massage in the jacuzzi!**

**Massage beds are heated!**

**Massage with hot stones!**

**Body to body massage!**

**Prices from 40 EUR**

**Escort at hotel**

## TIPS FOR RELAX



## LIVIA ESCORT

Phone: +420 728 675 947, 720 490 010  
[www.liviaescort.cz](http://www.liviaescort.cz)

Gentlemen, in case visiting men's night clubs isn't your cup of tea (but you'd still like to have some fun), try Livia Escort - a 24 hour service, where the ladies come to you - either straight to your home or to a one-hour hotel. Livia Escort offers much more than regular escort services. If you have a long business trip ahead of you, why not enjoy the company of one of Livia Escort's ladies? You'll see that even work can be fun. This escort guarantee absolute discretion. Each girl offers a given range of services.



## NIGHT CLUB NEON

Balbínova 21, P-2, Phone: +420 222 250 105, [www.neonclub.cz](http://www.neonclub.cz)  
 Open from 12:00 to 05:00  
 Price: 1 400 CZK per hour

Neon Club is located near the center of Prague in the street Balbínova. You will be pleased that there is no admission charge. The company is among other things, very comfortably furnished and you will meet 35 beautiful girls every day. The local prices are funny but true and even the escort service is probably the cheapest in Prague. You can visit the Neon Club just for a drink and have fun with nice girls.



## NURU HEAVEN

Španělská 4, Prague 2  
 Phone: +420 722 405 529  
[www.nuruheaven.cz](http://www.nuruheaven.cz)

Newly opened luxury men's wellness club offers many kinds of sensual and erotic massages and for each of them you can choose one or more of professional masseuses. Specialty is the „Royal massage“ where you can enjoy oil and nuru massage with bottle of fine champagne and cheese varieties with fruits. 3 luxurious and spacious massage rooms equipped with heated mattresses on which you will be perfectly relieved. There are modern bathroom, high quality terry bathrobes and towels prepared for each client.



## U RŮŽE PRIVAT

Prague 1  
 Phone: +420 605 183 004  
[www.sex.cz/uruzepivat](http://www.sex.cz/uruzepivat)

Do you have a desire to satisfy your needs? Your desires and fantasies will be fulfilled in U Růže Privat. It does not matter if you love tender love with kissing, 69 position, something more exciting, or lesbian show, which you can also join. The opportunity to join to the two girls is the dream of most men! Absolute discretion, comfort, quality, purity, solid negotiations, escort, it's all a matter of course. Selection of eight girls.

# *Night Club Coctail Bar*



*Entry  
free*



*35 girls  
every day*

Balbínova 733/21,  
Praha 2

Phone: 00 420 733 121 022  
100m from Venceslav square

**[www.neonclub.cz](http://www.neonclub.cz)**

## TIPS FOR RELAX



### MASÁŽE LUXURY

Phone: +420 605 958 304  
[www.masaze-luxury.cz](http://www.masaze-luxury.cz)

Are you tired after work and need to relax, eliminate stress and experience something unusual? Combine business with pleasure and indulge in erotic massage in Luxury. Massages are performed with hands and body in 3 comfortable rooms. Massaging is performed on the heated large massage pads 2 x 2 m. With the help of dim light, candle fire and relaxing music you will enjoy your massage for sure. SPECIAL OFFER! Bring your friend or colleague to massage and get a discount of 500 CZK.



### HEAVEN MODELS

Náměstí míru, Prague 2  
Phone: +420 773 034 349  
[www.heavenmodels.cz](http://www.heavenmodels.cz)

Young, beautiful girls who love to use their freedom and your pleasure. In their arms there can be found tenderness, passion, but also purity and discretion. They aren't watching the clocks, because the erotic fondling and sex are fun for them. Every girl is a different erotic creation, and offers a variety of favors that you always agree in the room. You can visit them at their cozy nest or enjoy them in the comfort of your home or hotel.



### DIAMOND GIRLS

Phone: +420 702 874 699, Seifertova 15,  
Prague 3, [www.diamondprague.cz](http://www.diamondprague.cz)

Discover the magic of luxury and taste the unbound erotic entertainment of Diamond club. You can expect the greatest comfort: nice Slovakian, Czech and Russian students, discreet environment, with superior quality, unique style, top service and access. You just need to visit the private flat to be personally persuaded. The choice of at least 5 beautiful girls and the best prices in the whole Prague – 1 hour 1300 CZK, 30 minutes 1000 CZK and escort service for 2000 CZK. 10 from 10 gentlemen can recommend the Diamond club, which is located near the Central Railway Station.



### EXTASY CABARET

Chlumova 13, Prague 3 - Žižkov  
Phone: +420 222 780 048, 773 024 944  
[www.extasy.cz](http://www.extasy.cz)

Discover the island of luxury and comfort with beautiful and sexy young girls in continuous busy schedule. After calling the number 222 780 780 you will get a free ride to the club and back. The night club is fully air conditioned and has an over-filled bar. For owners of four-wheeled pets is the night club Extasy equipped with secure parking. You can also order the escort service.



EROTIC PARTIES,  
HOT GIRLS, MIXED DRINKS,  
DISCREET ENVIRONMENT

*Extasy*  
cabaret

**OPEN DAILY**

20:00 - 06:00

Nejpohodovější noční klub

**Extasy:** Chlumova 13, Praha 3

**[www.extasy.cz](http://www.extasy.cz)**





**PRIVÁT U RŮŽE**

**HIGH LEVEL OF SERVICE**

**DISCRETION**

**PRIVATE APARTMENT**

**WE SPEAK ENGLISH**

**+420 777 054 399**

# Egyptian massages

A woman with long dark hair is posing in purple lace lingerie. She is looking down and to the side, with her hands near her face. The background is dark and moody.

Body-to-body  
massage

Nuru massage

Nuru massage

Tantra massage

Erotic massage

Escort Service

[www.erotic-massage-praha.cz](http://www.erotic-massage-praha.cz)

Contact us 24 h

728 219 076, 222 515 812, 774 593 651.

Slavíkova 19, Prague 2 – Vinohrady

Massaze: Non-Stop

# IN WHICH CASES YOU HAVE TO BE !!!CAREFUL IN PRAGUE!!!



**P**rague is undoubtedly a beautiful city. It has a number of unique places where you can party all day and night. Complete paradise for tourists. And you know that paradise can easily become hell. Therefore, we bring you five tips on which cases you have to be careful.

## 1) Taxi drivers

This is the basis that applies absolutely in every big city. And Prague is not an exception. Of course, not every taxi driver is a thief. But as soon as poorly paid driver (and it's not a dream job for sure) find confused tourist, he immediately turns this opportunity to get some extra money from you. You should know that the whole city center takes just few kilometers and it's simply not possible that someone pays 800 CZK for the route from the Old Town Square to the Peace Square (náměstí Míru). For that kind of money you could get to town 20 minutes from Prague!

Always be careful and watch the taximeter and check the boarding amount. And now we are slowly getting to the point two.

## 2) Exchange offices

We can say that those are the taxi drivers in static booths. They are behind a Plexiglas and tastefully blabbering numbers you don't understand. Do not be lazy and find out the currency by yourself. You must be able to count a little and as a result

you can save a lot of money. If you are lazy to count, pull out a bank note and burn it. That will be the same effect as walking into the exchange office unprepared.

## 3) Small shops

There are lot of small untrusted food shops in the center that value the goods 10 times more expensive than normal. Most of the time you can recognize them – they don't have price tags anywhere, their relatives fought in Vietnam War or they have contacts in Russia.

## 4) Around the Central Railway Station

There are places where even a born and raised Prague citizen doesn't dare to go after dark. The situation of the Central Railway Station is desperate. Every day you can see dozens of dubious existences sitting on the benches and spending time by sipping wine from boxes or another cheap alcohol. Among the Prague citizens the park is nicknamed as Sherwood. And it has its modern Robins Hood. The difference, however, is that they take everything from everybody. And that means that the fifth point is ...

## 5) Pickpockets

Pickpockets are everywhere and especially in Prague they have developed their noses for tourists. So be careful not to give them too much smell.

th.

# BATALION<sup>®</sup>

## COMICS MUSEUM BAR & CLUB

SINCE 1880

Křivo  
SAŽEK<sup>®</sup>

ENJOY 3 FLOORS OF FUN  
CLUB+BAR&CAFE+MUSEUM

(MUSEUM TOUR STARTS EVERY  
30 MIN. AT THE BAR)

SITUATED JUST IN THE CITY CENTER,  
SERVING THE BEST OF CZECH BEERS,  
COCKTAILS AND SOFT DRINKS.

TOP CZECH DARK BEER 45 CZK 0,5LT

*Budweiser<sup>®</sup>*  
*Budvar*

MORE THAN 10 SORTS OF BEER  
ABSINTH MENU, COCKTAILS MENU



ABSINTH MENU  
FROM 65 - 100 CZK

COCKTAIL BAR  
CAPACITY  
FOR 120 PERS

T-SHIRTS - SOUVENIRS - COMICS GALLERY

MUSEUM (OPEN: 12-21, ENTRY 170/100)  
BAR&CAFE (OPEN: NONSTOP: 24/7)  
CLUB (OPEN: 20:00-7:00)

[WWW.BATALION.CZ](http://WWW.BATALION.CZ)

[WWW.PRAGUE-COMICS-MUSEUM.COM](http://WWW.PRAGUE-COMICS-MUSEUM.COM)

ADDRESS: 28. ŘÍJNA, PRAHA 1

TEL.: +420 220 108 147





Fashion Restaurant  
Fashion Club  
Fashion Terrace

# ZÁBAVA NAD PRAHOU

ENTERTAINMENT ABOVE PRAGUE

ADRESA

Na střeše OD Kotva  
Náměstí Republiky 8  
110 00 Praha 1

KONTAKTY

Rezervace stolů  
Table reservation  
+420 774 138 803  
[www.f-club.cz](http://www.f-club.cz)

